



Module 3: Regional Sustainability Problems, Risks & Thresholds

**Paris Meeting Feb 05:
Support to and Needs needs from M2**

M3 Objectives

*M3 will have to provide the answer to the question “**Do the changes matter?**”*

*M3 will **integrate** the expected European trends and changes identified in M2 at the **regional level** by comparing them against sustainability tolerance limits.*

*These are defined by **spatial conditions, functional thresholds and policy targets.***

Objectives

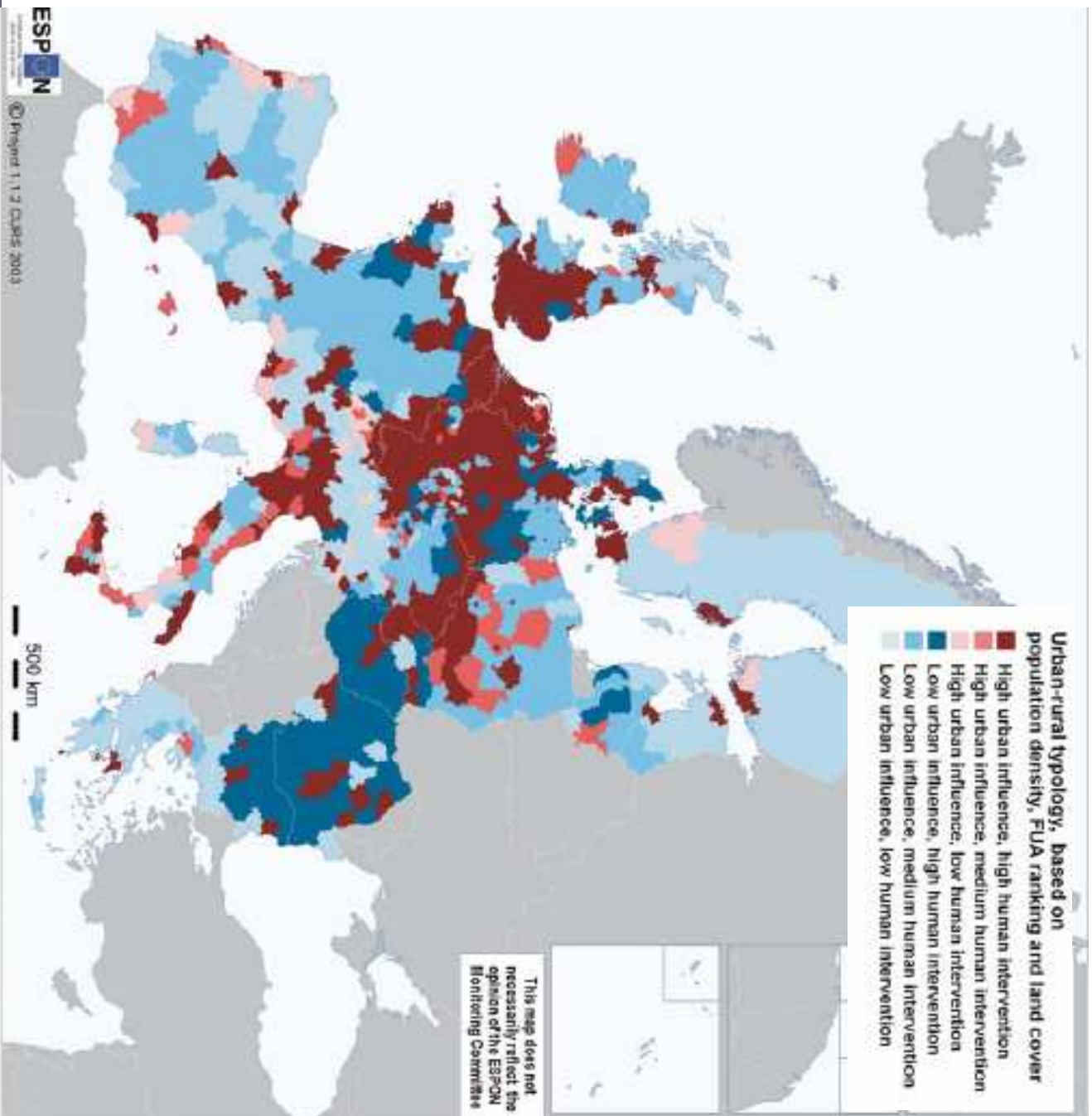
Work packages of Module 3: Regional sustainability risks, thresholds & targets			
No	Title	Short description	Module link
3.1	Spatial reference framework	<i>Spatial economic, landscape and policy reference frameworks for sustainability impact assessment</i>	M4, M5
3.2	Sustainability thresholds	<i>Selection of sustainability indicator thresholds to identify Sustainability Risk Regions at the regional level using expert judgments</i>	M2
3.3	Sustainability targets	<i>Identification of sustainability targets making use of participatory processes</i>	M6, M7
3.4	Regional protocols	<i>Protocols for the implementation of results into Module 4</i>	M4



Sustainability Impact Assessment:
Tools for environmental, social and economic
effects of multifunctional land use in European Regions



Module 3: Regional Sustainability Problems, Risks & Thresholds



Political & Socio-Economic Regions

**Sustainability Impact Assessment:
Tools for environmental, social and economic
effects of multifunctional land use in European Regions**



Module 3: Regional Sustainability Problems, Risks & Thresholds

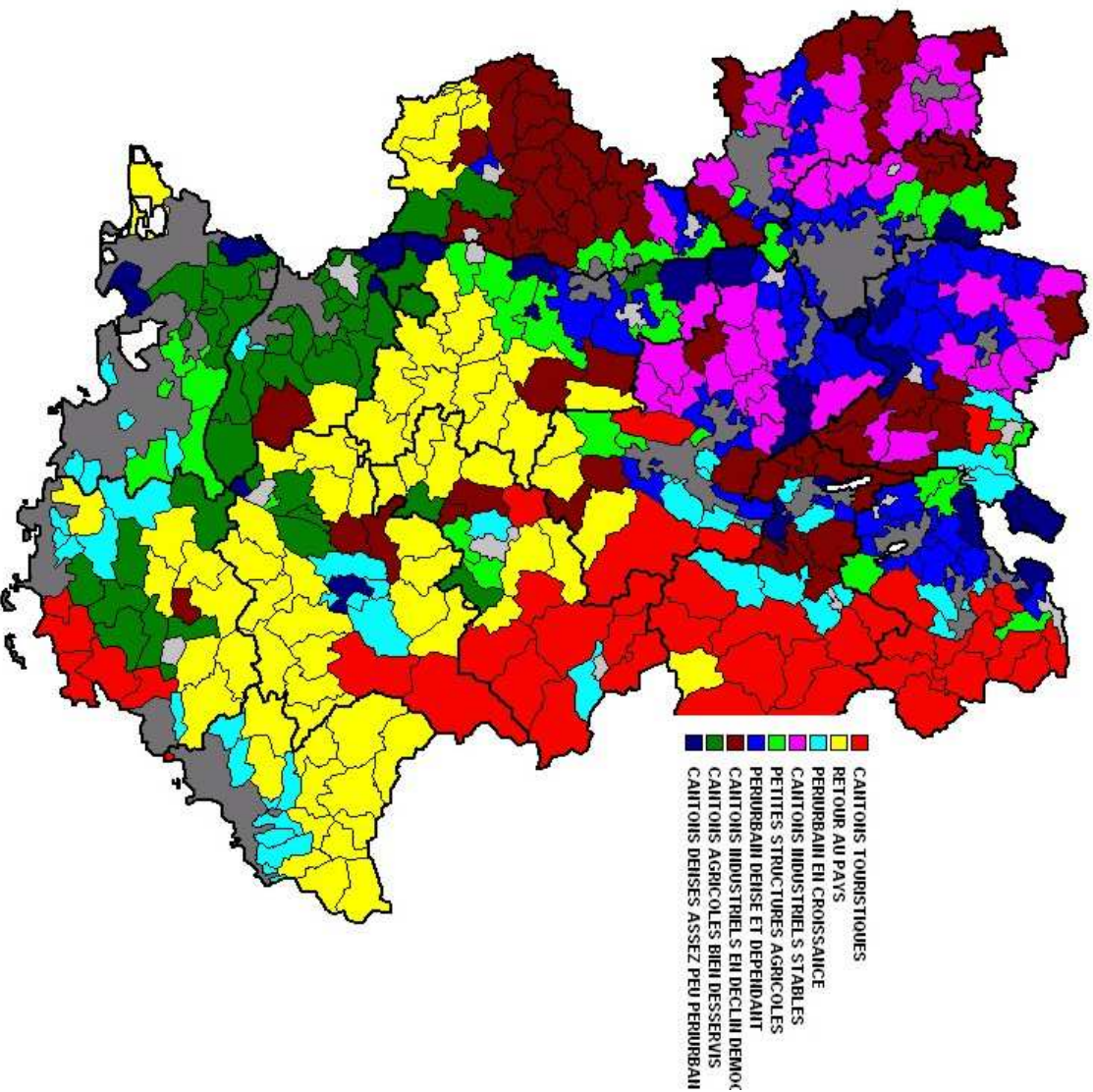
M3 Services

***Socio-Economic Profiles at Pilot Regional Level
(Nuts 4):***

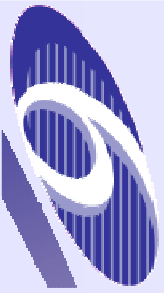
Sustainability Impact Assessment:
Tools for environmental, social and economic
effects of multifunctional land use in European Regions



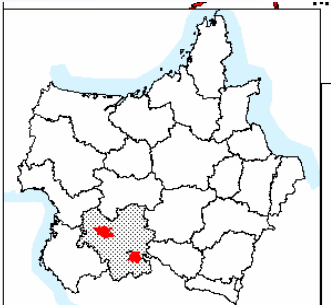
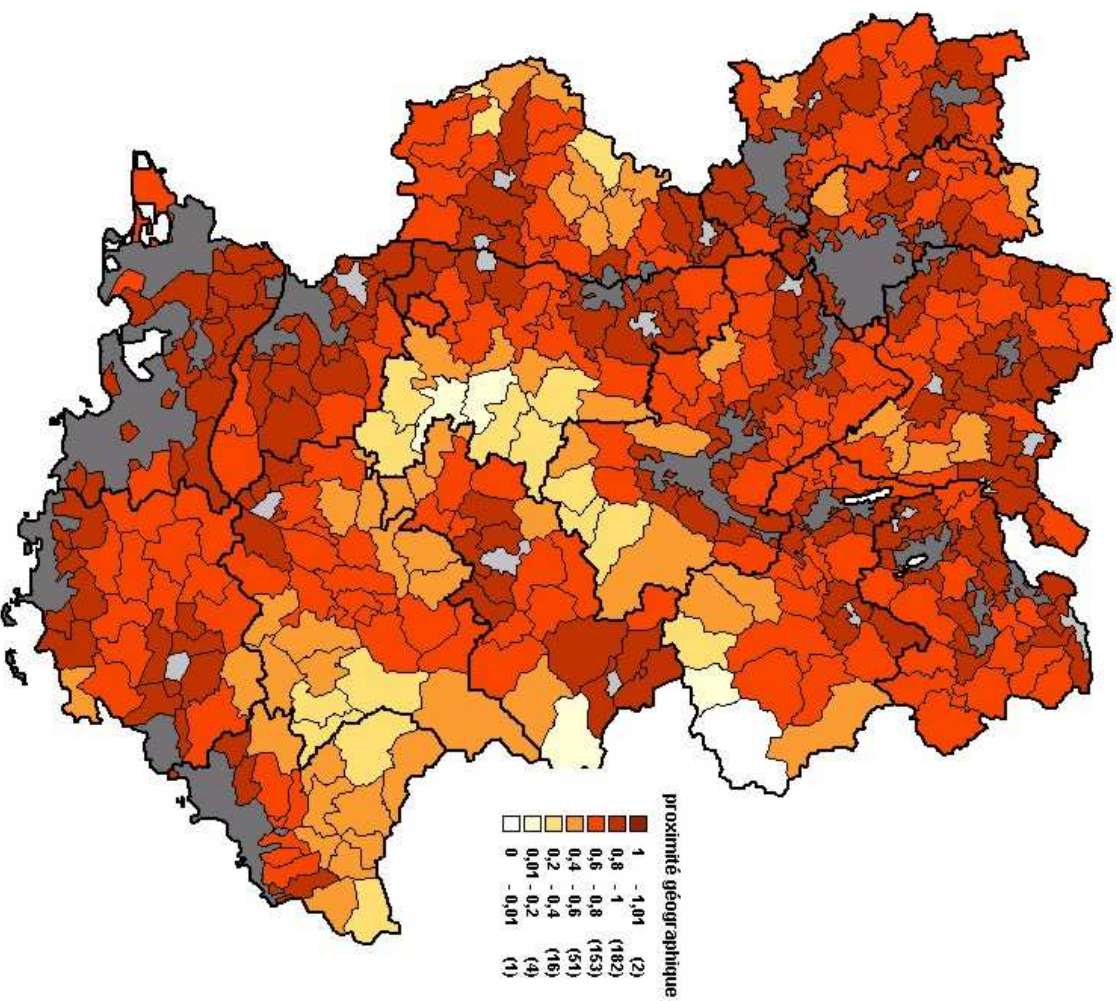
Main types of rural zones



Sustainability Impact Assessment: Tools for environmental, social and economic effects of multifunctional land use in European Regions



Geographic nearness indicator





M3 Services

Landscape Profiles at :

- ***The regions economic potential:***

key indicators to introduce into regional economic profiles would be, for example, share of (land use-related) GNP and GNP changes to take into account differences in surfaces between regions;

- ***The human pressure level:***

one key indicator, population density (and changes in population density), insofar these pressures originate from human settlement;

- ***The spatial rural development trends:***

key indicator that assess the proportion of various rural area types linked to tourism, agriculture and nature conservation within regions as defined in landscape typology.

Module 3: Regional Sustainability Problems, Risks & Thresholds

..... Example for a
Bio-physical and land use typology

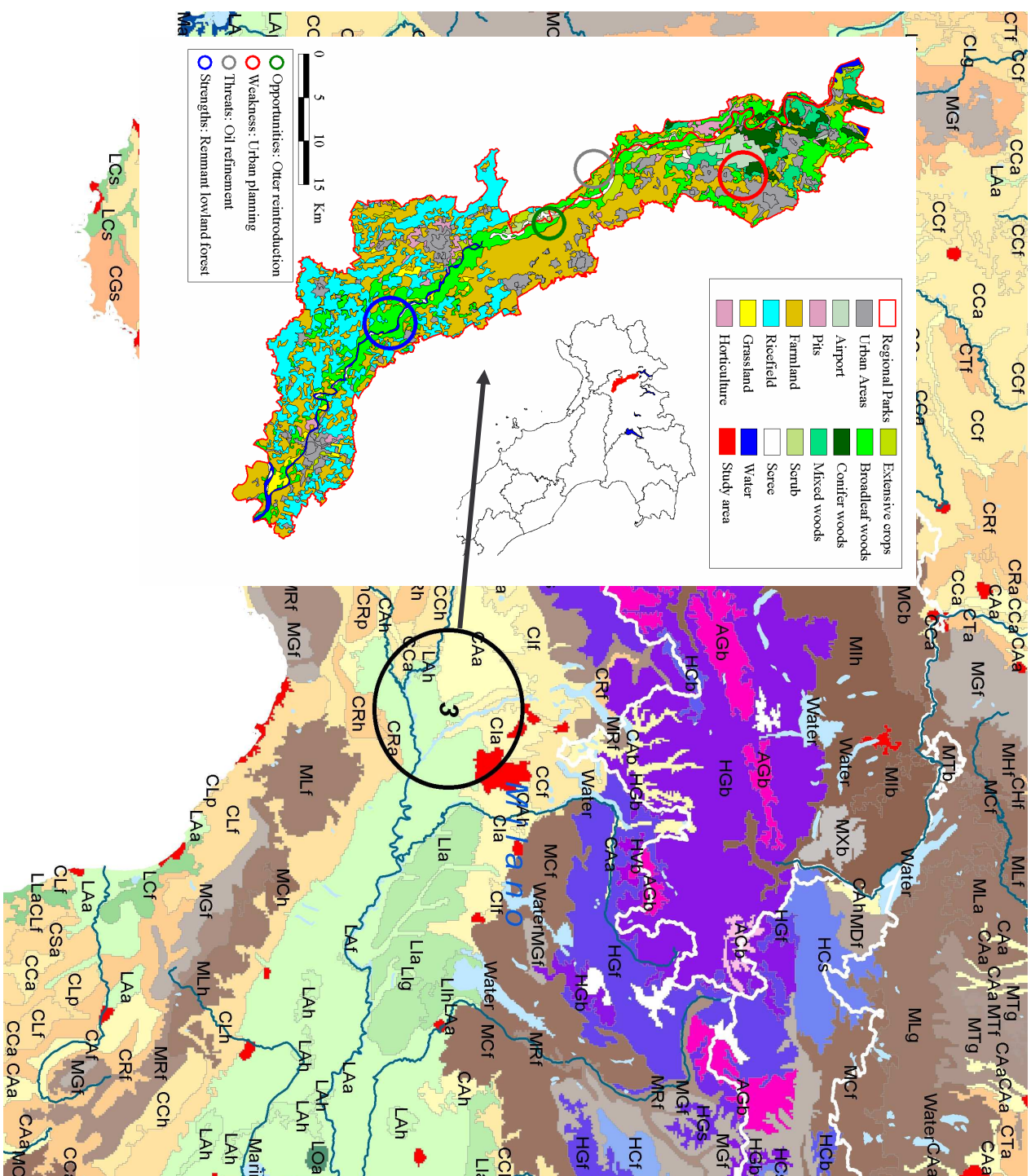
The map displays a detailed classification of land use and bio-physical characteristics across Europe. The legend on the right lists 20 categories, including various types of forests, agricultural land, urban areas, and water bodies. A red rectangle highlights a specific region in central Europe, likely for further analysis or comparison.

C.A. Mucher, J. Klijn, A. Koomen and D. Vlascher, November 2004

Sustainability Impact Assessment: Tools for environmental, social and economic effects of multifunctional land use in European Regions



Module 3: Regional Sustainability Problems, Risks & Thresholds

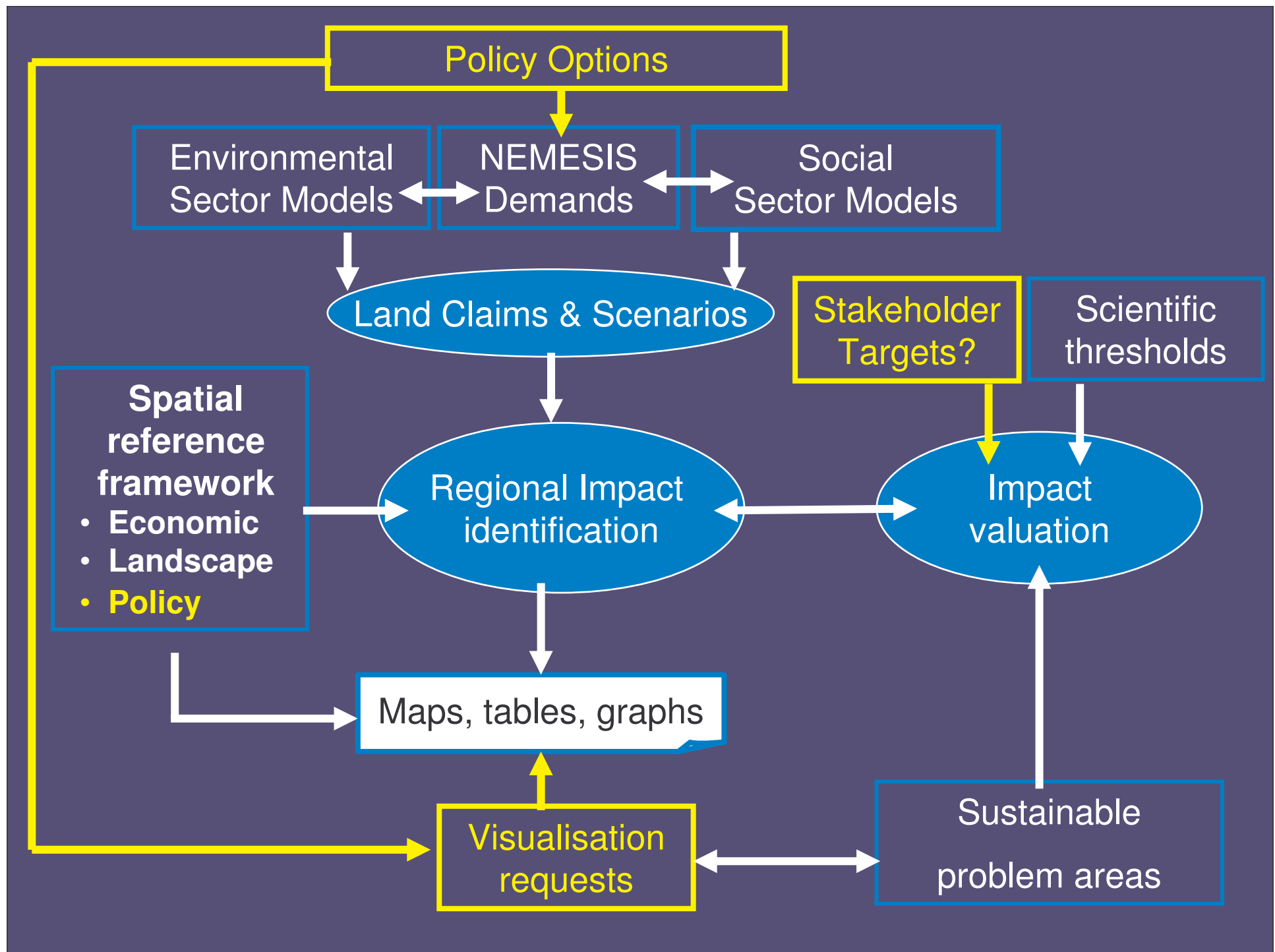


**Sustainability Impact Assessment:
Tools for environmental, social and economic
effects of multifunctional land use in European Regions**



Module 3: Regional Sustainability Problems, Risks & Thresholds

Requirements from Module 2



Module Meetings (for discussion)

March 2005: **Technical Meeting 3.1 & 3.2**
 Wageningen/Paris/Brussels

Participants: **U Firenze, Alterra, U Vienna, U Nottingham**
 WSL, CEH, WUR

October 2006: **Module 3 Meeting**
 Alterra, Amsterdam/Wageningen

Participants: **all**