



## 5420 *Sarcopoterium spinosum phrygana*

---

<b>Habitat code</b>	5420
<b>Priority</b>	No
<b>Habitat group</b>	Sclerophyllous scrubs
<b>Regions</b>	Mediterranean

Low, thorny formations of hemispherical shrubs of the coastal thermo-Mediterranean zone of Aegean islands, of mainland Greece and the Ionian islands, of coastal Anatolia, much more widespread and diverse than the western Mediterranean formations. Typical plants are *Sarcopoterium spinosum*, *Centaurea spinosa*, *Satureja thymbra*, *Thymus capitatus*, *Genista acanthoclada*, *Anthyllis hermanniae*, *Euphorbia acanthothamnus* etc.

Overall conclusion „FV“ because of the favourable status of parameters for all reporting MS except Malta. Non genuine change concluded in bioregion. Greek Area data are incorrect and were not taken into the account.

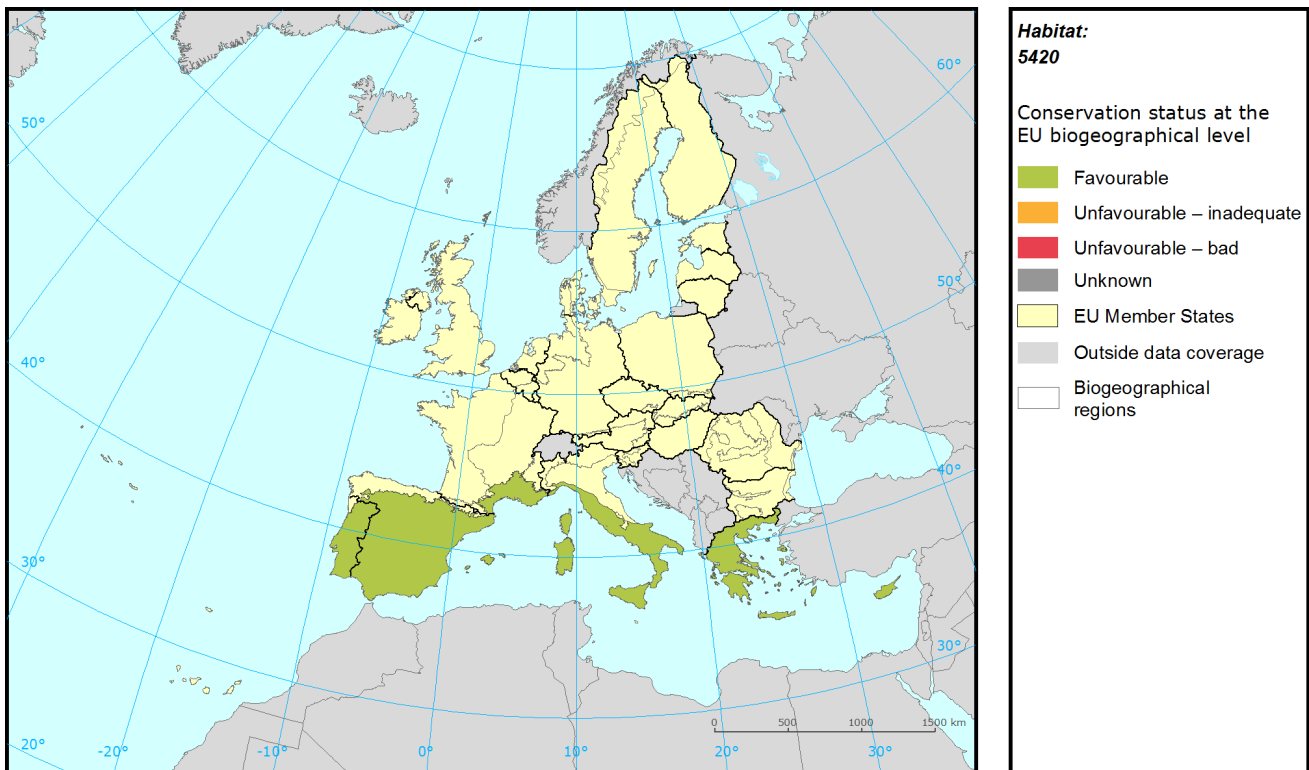
To the most important threats belong grazing, artificial planting on open ground (non-native trees), dispersed habitation and motorised vehicles.

The most important pressures are grazing, cultivation, artificial planting on open ground (non-native trees) and dispersed habitation.

# Habitat: 5420 *Sarcopoterium spinosum phryganas*

Report under the Article 17 of the Habitats Directive

## Assessment of conservation status at the European biogeographical level



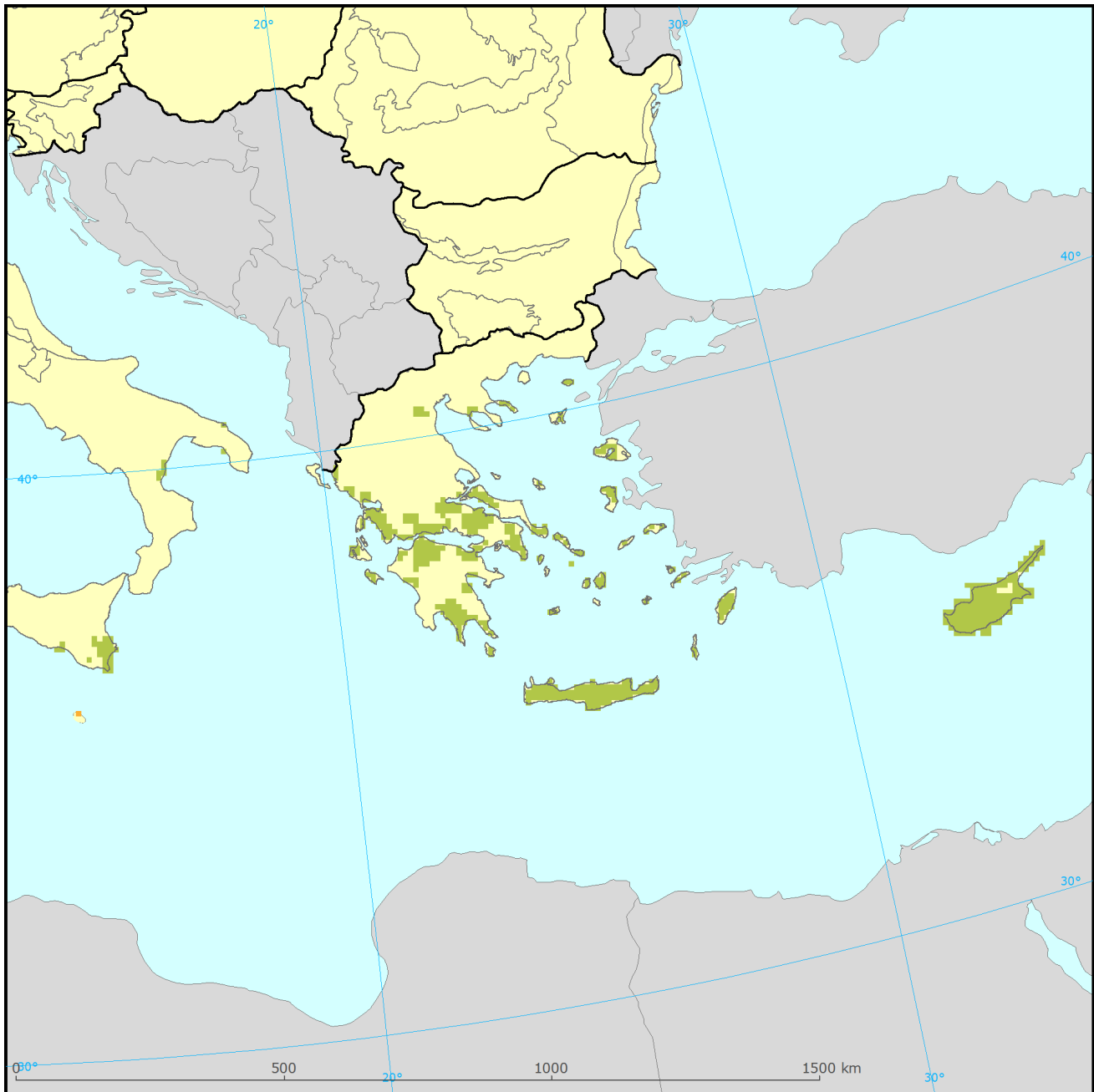
Region	Conservation status (CS) of parameters				Current CS	Trend in CS	% in region	Previous CS	Reason for change
	Range	Area	Structure & Functions	Future prospects					
MED	FV	FV	FV	FV	FV	=	100	FV	

See the endnote for more information<sup>i</sup>

# Habitat: 5420 *Sarcopoterium spinosum phryganas*

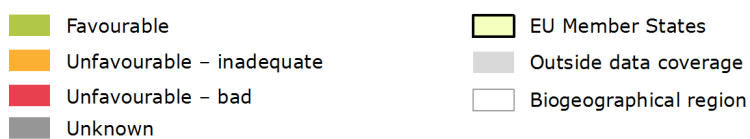
Report under the Article 17 of the Habitats Directive

## Assessment of conservation status at the Member State level



### Habitat: 5420

Distribution and conservation status at the Member State level



The map shows both Conservation Status and distribution using a 10 km x 10 km grid. Conservation status is assessed at biogeographical level. Therefore the representation in each grid cell is only illustrative.

# Habitat: 5420 *Sarcopoterium spinosum phryganas*

Report under the Article 17 of the Habitats Directive

MS	Region	Conservation status (CS) of parameters				Current CS	Trend in CS	% in region	Previous CS	Reason for change
		Range	Area	Structure & functions	Future prospects					
CY	MED	FV	FV	FV	FV		20.1	XX	Better data	
GR	MED	FV	FV	FV	FV		74.8	FV		
IT	MED	FV	FV	FV	FV		5.0	U1	Changed method	
MT	MED	U1	U1	U1	U1	=	0.2	U1+	Genuine	

Knowing that not all changes in conservation status between the reporting periods were genuine, Member States were asked to give the reasons for changes in conservation status. Bulgaria and Romania only joined the EU in 2007 and Greece did not report for 2007-12 so no reason is given for change for these countries. Greek data shown above is from 2001-06.

## Main pressures and threats reported by Member States

Member States were asked to report the 20 most important threats and pressures using an agreed hierarchical list which can be found on the [Article 17 Reference Portal](#). Pressures are activities which are currently having an impact on the habitats and threats are activities expected to have an impact in the near future. Pressures and threats were ranked in three classes 'high, medium and low importance'; the tables below only show threats and pressures classed as 'high', for some habitats there were less than ten threats or pressures reported as highly important.

### Ten most frequently reported 'highly important' pressures

Code	Activity	Frequency
A04	Grazing by livestock	100

### Ten most frequently reported 'highly important' threats

Code	Activity	Frequency
A04	Grazing by livestock	100

# Habitat: 5420 *Sarcopoterium spinosum phryganas*

Report under the Article 17 of the Habitats Directive

## Proportion of population covered by the Natura 2000 network

Member States were asked to report the area of the habitat which is covered by the Natura 2000 network. The percentage of the habitat area covered by the network was estimated by comparing the area within the network and the total area in the biogeographical/marine region.

### Percentage of coverage by Natura 2000 sites in biogeographical/marine region

MED	
CY	47
IT	96
MT	100

See the endnotes for more information<sup>ii</sup>

## Most frequently reported conservation measures

Member States were asked to report up to 20 conservation measures being implemented for this habitat using an agreed list which can be found on the Article 17 Reference Portal. Member States were further requested to highlight up to five most important ('highly important') measures; the table below only shows measures classed as 'high', for many habitats there were less than ten measures reported as highly important.

### Ten most frequently reported 'highly important' conservation measures

Code	Measure	Frequency
6.1	Establish protected areas/sites	29
6.3	Legal protection of habitats and species	29
6.4	Manage landscape features	14
7.1	Regulation/ Management of hunting and taking	14
8.1	Urban and industrial waste management	14

This information is derived from the Member State national reports submitted to the European Commission under Article 17 of the Habitats Directive in 2013 and covering the period 2007-2012. More detailed information, including the MS reports, is available at:

<http://bd.eionet.europa.eu/article17/reports2012/habitat/summary/?group=Sclerophyllous+scrubs&period=3&subject=5420>

# Habitat: 5420 *Sarcopoterium spinosum phryganas*

Report under the Article 17 of the Habitats Directive

**i Assessment of conservation status at the European biogeographical level:** Current Conservation Status (Current CS) shows the status for the reporting period 2007-2012, Previous Conservation Status (Previous CS) for the reporting period 2000-2006. Reason for change in conservation status between the reporting periods indicates whether the changes in the status were genuine or not genuine. Previous Conservation Status was not assessed for Steppic, Black Sea and Marine Black Sea regions. For these regions the Previous status is therefore considered as 'unknown'. The percentage of the habitat area occurring within the biogeographical/marine region (% in region) is calculated based on the area of GIS distribution.

**ii Percentage of coverage by Natura 2000 sites in biogeographical/marine region:** In some cases the population size within the Natura 2000 network has been estimated using a different methodology to the estimate of overall population size and this can lead to percentage covers greater than 100%. In such case the value has been given as 100% and highlighted with an asterisk (\*). The value 'x' indicates that the Member State has not reported the habitat area and/or the coverage by Natura 2000. No information is available for Greece. The values are only provided for regions, in which the occurrence of the habitat has been reported by the Member States.