

EUROPEAN TOPIC CENTRE ON BIOLOGICAL

Under contract with the European Environment Agency

CENTRE THEMATIQUE EUROPEEN SUR LA DIVERSITE

Sous contract avec l'Agence Europeenne de l'Environnement

**REPORT UNDER ARTICLE 17
OF COUNCIL DIRECTIVE 92/43/EEC**

**QA/QC REPORT
ON FINAL DELIVERY FROM
LITHUANIA**

Performed upon the envelope called: Buveiniu direktyvos igyvandinimo ataskaita
stored at: <http://cdr.eionet.europa.eu/lt/eu/art17/envrgostg>
released on: 03/03/2008 12:39:39

Museum National
d'Histoire Naturelle

57 rue Cuvier
F-75231 Paris cedex 05
France

Tel. +33.1.40.79.38.70
Fax. +33.1.40.79.38.67

ctecninf@mnhn.fr
<http://biodiversity.eionet.eu.int>

IMPORTANT NOTE	3
LIST OF ABBREVIATIONS USED	3
GENERAL STATISTICS	4
Number of reports provided.....	4
Number of issues identified during QA/QC process	4
GENERAL REPORT - Data not compliant with QA/QC procedures	5
2. State of designation of Natura 2000	5
3.1 Management tools - Art. 6(1) - Management plans and Management bodies	5
6. Measures taken in relation to approval of plans and projects - Art. 6(3,4).....	5
10.2 Measures taken to ensure the protection of species (Arts. 12 to 16) - Control systems for the incidental capture and killing of species (Art. 12(4))	5
10.3 Measures taken to ensure the protection of species (Arts. 12 to 16) - General main measures established to deal with the taking/exploitation in the wild of specimens of wild species of Annex V (Art. 14)	5
HABITATS REPORTING - Errors detected by QA/QC procedure	5
2.6.2 Conclusion for habitat area	5
SPECIES REPORTING - Errors detected by QA/QC procedure	6
1.2 Map of Species distribution	6
2.6 Future prospects for the species (not conclusion)	7
2.8.1 Conclusion for species range	7
2.8.2 Conclusion for species population	8
2.8.5 Conclusion for species overall assessment.....	8
SPECIES REPORTING - Assessments given as unknown or not provided for all parameters	8
2.8.5 Conclusion for species overall assessment.....	8
HABITATS REPORTING - Mandatory data not reported or not following the agreed format	8
0. General issues	8
2.5.3 Typical species for habitat	8
2.5.4 Typical species assessment.....	8
SPECIES REPORTING - Mandatory data not reported or not following the agreed format	8
0. General issues	8
2.3.6 Species range trend period	9
2.4.7 Species population trend period	9
HABITATS REPORTING - QA/QC indicates incoherence between spatial and non-spatial data or with other data officially submitted	9
0. General issues	9
1.1 Map of Habitat range.....	9
1.2 Map of Habitat distribution.....	9
2.3.1 Surface range of the habitat	10
SPECIES REPORTING - QA/QC indicates incoherence between spatial and non-spatial data or with other data officially submitted	10
1.1 Map of Species range	11
1.2 Map of Species distribution	11
2.3.1 Surface range of the species.....	11
Spatial Data not compliant with QA/QC procedures	15
Non-spatial Data not compliant with QA/QC procedures	16

IMPORTANT NOTE

This QA/QC report is provided for information only. No additional delivery is required from the Member State. The reporting envelope is now closed and you are not able to upload any files.

However, National Data Coordinators are invited to use the Article 17 Consultation Tool to review the national data. The review process allows you to draw attention to new information or to significant errors in the Article 17 report. In doing so, the EU biogeographical assessments will be more accurate.

Please consult the background paper and user manual available at http://circa.europa.eu/Public/irc/env/monnat/library?l=/habitats_reporting/reporting_2001-2007/internet_consultation&vm=detailed&sb=Title to see how you can correct possible errors using the web tool (<http://biodiversity.eionet.europa.eu/article17>)

LIST OF ABBREVIATIONS USED

- cf. Abbreviation for the Latin word *confer*, meaning "compare" or "consult"
- GML Geography Markup Language files submitted by Member States that contain spatial data
- XML Extensible Markup Language files submitted by Member States that contain descriptive data
- MAP Used to indicate the provided GML file (map), or to indicate the map of Natura 2000 site(s)
- * If used after the filename it indicates the fact that ETC/BD had performed the correction.

Biogeographical regions:

- ALP Alpine
- ATL Atlantic
- BOR Boreal
- CON Continental
- MAC Macaronesia
- MATL Marine Atlantic
- MBAL Marine Baltic
- MED Mediterranean
- MMAC Marine Macaronesian
- MMED Marine Mediterranean
- PAN Pannonian

GENERAL STATISTICS

Number of reports provided

Reports on	Number
Habitats	54
Species	103
TOTAL	157

Note: Habitats & species listed as marginal, occasional, etc. are not counted above. However the MS did not reported on any such species or habitat.

Number of issues identified during QA/QC process

Issues on	Errors	Missing	Incoherent	Not assessed
Non Spatial Data (XML)	11	5	66	5
Spatial Data (GML)	39	10	42	-

GENERAL REPORT - Data not compliant with QA/QC procedures

2. State of designation of Natura 2000

Issue 20 .

- 1 . The number of sites of community importance provided in the general report (266) does not match the number of sites in the Natura 2000 database (279) received from the European Commission prior to 31/12/2006.

3.1 Management tools - Art. 6(1) - Management plans and Management bodies

Issue 31 .

- 1 . A value of zero was given for number of sites for which comprehensive management plans have been adopted. No sites were listed in the respective categories. It will be interpreted that no comprehensive management plan was adopted.

6. Measures taken in relation to approval of plans and projects - Art. 6(3,4)

Issue 60 .

- 1 . A value of zero was given for the number of projects for which compensation measures were necessary and Commission opinion was requested. No sites were listed in the relevant categories. It will be interpreted that compensation measures were not necessary and that there was no case where Commission opinion was requested.

10.2 Measures taken to ensure the protection of species (Arts. 12 to 16) - Control systems for the incidental capture and killing of species (Art. 12(4))

Issue 102 .

- 1 . *Vespertillio murinus*, *Leucorrhina caudalis*, *Leucorrhina pectoralis* are not correct species names.

10.3 Measures taken to ensure the protection of species (Arts. 12 to 16) - General main measures established to deal with the taking/exploitation in the wild of specimens of wild species of Annex V (Art. 14)

Issue 103 .

- 1 . *Martes foina* is not an Annex V species.

HABITATS REPORTING - Errors detected by QA/QC procedure

2.6.2 Conclusion for habitat area

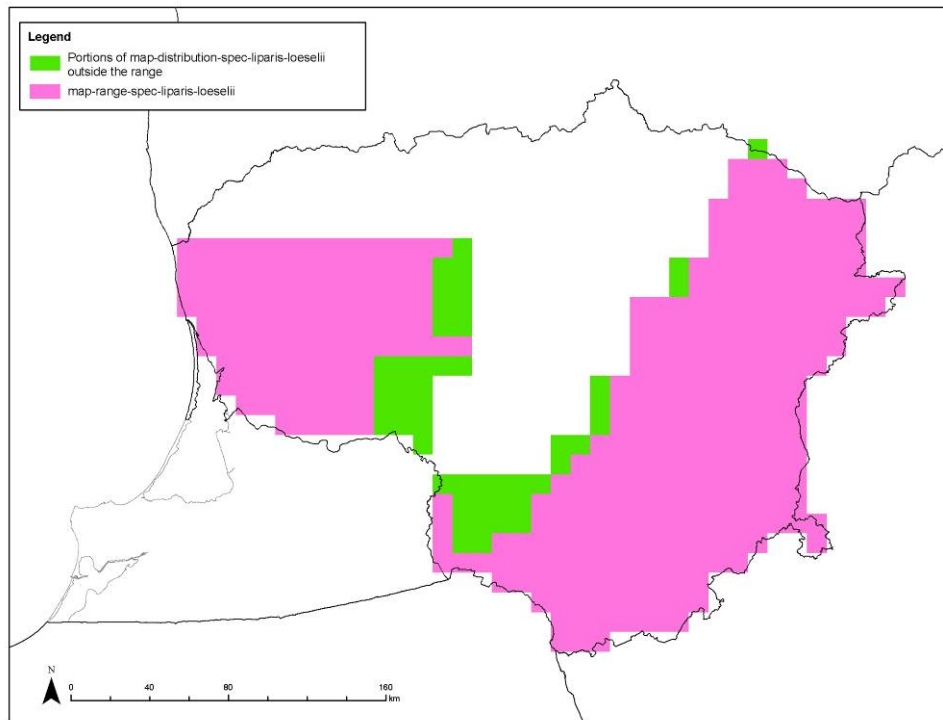
Issue 18550 Conclusion unexpected according to provided values

- 1 . habitatype-1170.xml (cf. BOR: actual value: 213; favourable reference value: >213; trend: =; sub-conclusion: FV (>10%: 0%))

SPECIES REPORTING - Errors detected by QA/QC procedure

1.2 Map of Species distribution

Issue 7245 *Distribution, or a portion of it, does not lie within the Range of the same species*



- 1 .map-distribution-spec-aeshna-viridis.gml (cf. MAP:)
- 2 .map-distribution-spec-arnica-montana.gml (cf. MAP:)
- 3 .map-distribution-spec-castor-fiber.gml (cf. MAP:)
- 4 .map-distribution-spec-cobitis-taenia.gml (cf. MAP:)
- 5 .map-distribution-spec-cypridium-calceolus.gml (cf. MAP:)
- 6 .map-distribution-spec-dytiscus-latissimus.gml (cf. MAP:)
- 7 .map-distribution-spec-eptesticus-serotinus.gml (cf. MAP:)
- 8 .map-distribution-spec-hirudo-medicinalis.gml (cf. MAP:)
- 9 .map-distribution-spec-hyla-arborea.gml (cf. MAP:)
- 10 .map-distribution-spec-lacerta-agilis.gml (cf. MAP:)
- 11 .map-distribution-spec-lampetra-planeri.gml (cf. MAP:)
- 12 .map-distribution-spec-liparis-loeselii.gml (cf. MAP:)
- 13 .map-distribution-spec-lopinga-achine.gml (cf. MAP:)
- 14 .map-distribution-spec-lycaena-helle.gml (cf. MAP:)
- 15 .map-distribution-spec-maculinea-arion.gml (cf. MAP:)
- 16 .map-distribution-spec-maculinea-teleius.gml (cf. MAP:)
- 17 .map-distribution-spec-muscardinus-avellanarius.gml (cf. MAP:)
- 18 .map-distribution-spec-myotis-brandtii.gml (cf. MAP:)
- 19 .map-distribution-spec-myotis-dasychneme.gml (cf. MAP:)

- 20 . map-distribution-spec-myotis-daubentonii.gml (cf. MAP:)
- 21 . map-distribution-spec-nyctalus-leisleri.gml (cf. MAP:)
- 22 . map-distribution-spec-nyctalus-noctula.gml (cf. MAP:)
- 23 . map-distribution-spec-osmoderma-eremita.gml (cf. MAP:)
- 24 . map-distribution-spec-pelobates-fuscus.gml (cf. MAP:)
- 25 . map-distribution-spec-plecotus-auritus.gml (cf. MAP:)
- 26 . map-distribution-spec-rana-ridibunda.gml (cf. MAP:)
- 27 . map-distribution-spec-rhodeus-sericeus-amarus.gml (cf. MAP:)
- 28 . map-distribution-spec-salmo-salar.gml (cf. MAP:)
- 29 . map-distribution-spec-sicista-betulina.gml (cf. MAP:)
- 30 . map-distribution-spec-sphagnum-papillosum.gml (cf. MAP:)
- 31 . map-distribution-spec-sphagnum-pulchrum.gml (cf. MAP:)
- 32 . map-distribution-spec-sphagnum-wulfianum.gml (cf. MAP:)
- 33 . map-distribution-spec-thesium-ebracteatum.gml (cf. MAP:)
- 34 . map-distribution-spec-thymallus-thymallus.gml (cf. MAP:)
- 35 . map-distribution-spec-triturus-cristatus.gml (cf. MAP:)
- 36 . map-distribution-spec-unio-crassus.gml (cf. MAP:)
- 37 . map-distribution-spec-vertigo-angustior.gml (cf. MAP:)
- 38 . map-distribution-spec-vertigo-moulinsiana.gml (cf. MAP:)
- 39 . map-distribution-spec-vespertilio-murinus.gml (cf. MAP:)

2.6 Future prospects for the species (not conclusion)

Issue 12250 The future prospects (2.6) for the species are not in concordance with the conclusion on future prospects (2.8.4)

- 1 . species-bombina-bombina.xml (cf. BOR: 2.6 future prospects: Poor; 2.8.4 conclusion future prospects: U2+)

2.8.1 Conclusion for species range

Issue 13110 Conclusion unexpected according to provided values

- 1 . species-barbus-barbus.xml (cf. BOR: actual value: 58168; favourable reference value: ~58168; trend: =; sub-conclusion: XX (>10%: 0%))
- 2 . species-coregonus-lavaretus.xml (cf. BOR: actual value: 23; favourable reference value: ~23; trend: =; sub-conclusion: U1 (>10%: 0%))
- 3 . species-cypridium-calceolus.xml (cf. BOR: actual value: 43466; favourable reference value: >43466; trend: =; sub-conclusion: FV (>10%: 0%))
- 4 . species-dryomys-nitedula.xml (cf. BOR: actual value: 65000; favourable reference value: ~65000; trend: =; sub-conclusion: U1 (>10%: 0%))
- 5 . species-lynx-lynx.xml (cf. BOR: actual value: 65200; favourable reference value: ~65200; trend: -; sub-conclusion: FV (>10%: 0%))
- 6 . species-rana-temporaria.xml (cf. BOR: actual value: 65200; favourable reference value: ~65200; trend: -; sub-conclusion: FV (>10%: 0%))
- 7 . species-salmo-salar.xml (cf. BOR: actual value: 51835; favourable reference value: ~51835; trend: =; sub-conclusion: U1 (>10%: 0%))

2.8.2 Conclusion for species population

Issue 13130 Conclusion unexpected according to provided values

- 1 .species-ophiogomphus-cecilia.xml (cf. BOR: actual value: 450000; favourable reference value: >450000; trend: +; sub-conclusion: FV (>25%: 0%))

2.8.5 Conclusion for species overall assessment

Issue 13300 Overall assessment not in line with sub-conclusions

- 1 .species-lynx-lynx.xml (cf. BOR: sub-conclusions: FV; U1; FV; U2; overall conclusion: U1+)

SPECIES REPORTING - Assessments given as unknown or not provided for all parameters

2.8.5 Conclusion for species overall assessment

Issue 13350 All sub-conclusions and overall assessment were provided as unknown or not reported. This indicates poor knowledge of the species or an assessment not performed

- 1 .species-barbus-barbus.xml (cf. BOR: sub-conclusions: XX; XX; XX; XX; overall conclusion: XX)
- 2 .species-myotis-brandtii.xml (cf. BOR: sub-conclusions: XX; XX; XX; XX; overall conclusion: XX)
- 3 .species-nyctalus-leisleri.xml (cf. BOR: sub-conclusions: XX; XX; XX; XX; overall conclusion: XX)
- 4 .species-oxyporus-mannerheimii.xml (cf. BOR: sub-conclusions: XX; XX; XX; XX; overall conclusion: XX)
- 5 .species-proserpinus-proserpina.xml (cf. BOR: sub-conclusions: XX; XX; XX; XX; overall conclusion: XX)

HABITATS REPORTING - Mandatory data not reported or not following the agreed format

0. General issues

Issue 13460 Annex I Habitat type listed in reference list in several biogeographical regions but not reported in biogeographical regions where present according to the reference list

- 1 .habitattype-1170.xml* (cf. MBAL: |habitat not reported in biogeographical region|) (BOR changed into MBAL)

2.5.3 Typical species for habitat

Issue 18000 Mandatory information missing or species names likely to be misspelled or unknown to taxonomic references

- 1 .habitattype-3190.xml (cf. BOR: Warnstorfla exannulata)
- 2 .habitattype-8310.xml (cf. BOR: |no value reported|)

2.5.4 Typical species assessment

Issue 18300 Mandatory information missing

- 1 .habitattype-8310.xml (cf. BOR: |no text provided|)

SPECIES REPORTING - Mandatory data not reported or not following the agreed format

0. General issues

Issue 6970 One or several maps reported for this habitat type but no XML data file provided

- 1 .map-distribution-spec-bison-bonassus.gml (cf. FILE: |coresponding XML file missing|)
- 2 .map-distribution-spec-callimorpha-quadripunctaria.gml (cf. FILE: |coresponding XML file missing|)

- 3 .map-distribution-spec-meesia-longiseta.gml (cf. FILE: |coresponding XML file missing)
- 4 .map-distribution-spec-mesosa-myops.gml (cf. FILE: |coresponding XML file missing)
- 5 .map-favourable-range-spec-bison-bonasmus.gml (cf. FILE: |coresponding XML file missing)
- 6 .map-favourable-range-spec-callimorpha-quadripunctaria.gml (cf. FILE: |coresponding XML file missing)
- 7 .map-range-spec-bison-bonasmus.gml (cf. FILE: |coresponding XML file missing)
- 8 .map-range-spec-callimorpha-quadripunctaria.gml (cf. FILE: |coresponding XML file missing)
- 9 .map-range-spec-meesia-longiseta.gml (cf. FILE: |coresponding XML file missing)
- 10 .map-range-spec-mesosa-myops.gml (cf. FILE: |coresponding XML file missing)

2.3.6 Species range trend period

Issue 8300 Mandatory information missing or value not in line with rules [YYYY or YYYY-YYYY where YYYY between (1900-2006)]

- 1 .species-botrychium-simplex.xml (cf. BOR: 1870-2006)

2.4.7 Species population trend period

Issue 9900 Mandatory information missing or value not in line with rules [YYYY or YYYY-YYYY where YYYY between (1900-2006)]

- 1 .species-botrychium-simplex.xml (cf. BOR: 1870-2006)

HABITATS REPORTING - QA/QC indicates incoherence between spatial and non-spatial data or with other data officially submitted

0. General issues

Issue 13470 Annex I habitat type reported but not listed in reference list at MS and Biogeographical level

- 1 .habitattype-1170.xml* (cf. BOR: |habitat not expected in biogeographical region|) (BOR changed into MBAL)

1.1 Map of Habitat range

Issue 13720 The range provided does not include the following Natura 2000 sites in which the habitat type is mentioned

- 1 .map-range-9190.gml (cf. MAP: LTLAZ0010)

1.2 Map of Habitat distribution

Issue 13750 The distribution provided does not include the following Natura 2000 sites in which the habitat type is mentioned

- 1 .map-distribution-3130.gml (cf. MAP: LTZAR0024)
- 2 .map-distribution-3140.gml (cf. MAP: LTIGN0013, LTSVE0018, LTSVE0019)
- 3 .map-distribution-3150.gml (cf. MAP: LTIGN0018, LTKLA0006, LTMOL0010, LTPLU0009, LTSIA0003, LTTAU0006)
- 4 .map-distribution-6210.gml (cf. MAP: LTPRI0012, LTTAU0001, LTTRA0003, LTTRA0007, LTVIK0003)
- 5 .map-distribution-6230.gml (cf. MAP: LTIGN0001, LTPRI0012, LTRAD0001, LTVIK0002)
- 6 .map-distribution-6410.gml (cf. MAP: LTJUR0011, LTKEL0010, LTPRI0012, LTTRA0003, LTVIN0002)
- 7 .map-distribution-6430.gml (cf. MAP: LTJUR0011, LTRAD0001, LTVIK0002, LTVIK0004, LTZAR0004)
- 8 .map-distribution-6510.gml (cf. MAP: LTJUR0011, LTPRI0012, LTTRA0003, LTVIK0002, LTVIK0003)
- 9 .map-distribution-6530.gml (cf. MAP: LTKLA0006)

- 10 .map-distribution-7120.gml (cf. MAP: LTTEL0005, LTTEL0006, LTTRA0001, LTUKM0004, LTVAR0018)
- 11 .map-distribution-7140.gml (cf. MAP: LTKEL0015, LTSVE0026, LTVAR0018)
- 12 .map-distribution-7160.gml (cf. MAP: LTRAD0001)
- 13 .map-distribution-7210.gml (cf. MAP: LTPLU0009, LTVAR0009)
- 14 .map-distribution-7220.gml (cf. MAP: LTROK0007)
- 15 .map-distribution-7230.gml (cf. MAP: LTAKM0001, LTVAR0009)
- 16 .map-distribution-9020.gml (cf. MAP: LTSAL0003)
- 17 .map-distribution-9070.gml (cf. MAP: LTKAU0007, LTKLA0006, LTMOL0011, LTPAN0003)
- 18 .map-distribution-9080.gml (cf. MAP: LTTAU0001)
- 19 .map-distribution-9180.gml (cf. MAP: LTLAZ0022)
- 20 .map-distribution-9190.gml (cf. MAP: LTKLA0006, LTLAZ0010)
- 21 .map-distribution-91E0.gml (cf. MAP: LTALY0001)

2.3.1 Surface range of the habitat

Issue 14350 **Range in the XML file shows a difference of more than 5 % from the range calculated from the GML file in the corresponding biogeographical region (not buffered for calculation of minimum values and buffered by 15 km for maximum values). This discrepancy can be due to spatial data being generalized during creation of the GML**

- 1 .habitattype-1130.xml (cf. BOR: reported value: 20; computed surface area from maps between: 156.2 - 200)
- 2 .habitattype-2110.xml (cf. BOR: reported value: 2.8; computed surface area from maps between: 299.7 - 1100)
- 3 .habitattype-2120.xml (cf. BOR: reported value: 148; computed surface area from maps between: 520.5 - 1500)
- 4 .habitattype-2130.xml (cf. BOR: reported value: 148; computed surface area from maps between: 520.5 - 1500)
- 5 .habitattype-2140.xml (cf. BOR: reported value: 148; computed surface area from maps between: 520.5 - 1500)
- 6 .habitattype-2170.xml (cf. BOR: reported value: 148; computed surface area from maps between: 520.5 - 1500)
- 7 .habitattype-2180.xml (cf. BOR: reported value: 160; computed surface area from maps between: 687.4 - 1700)
- 8 .habitattype-2190.xml (cf. BOR: reported value: 148; computed surface area from maps between: 520.5 - 1500)
- 9 .habitattype-2320.xml (cf. BOR: reported value: 50; computed surface area from maps between: 520.5 - 1500)
- 10 .habitattype-3190.xml (cf. BOR: reported value: 878; computed surface area from maps between: 1125.6 - 1200)
- 11 .habitattype-4030.xml (cf. BOR: reported value: 64700; computed surface area from maps between: 6783.1 - 7500)
- 12 .habitattype-8310.xml (cf. BOR: reported value: 0.01; computed surface area from maps between: 1 - 1)
- 13 .habitattype-9160.xml (cf. BOR: reported value: 32652; computed surface area from maps between: 34390.4 - 38500)
- 14 .habitattype-9190.xml (cf. BOR: reported value: 1769; computed surface area from maps between: 2400.2 - 30200)
- 15 .habitattype-91T0.xml (cf. BOR: reported value: 24000; computed surface area from maps between: 25781.5 - 30200)

SPECIES REPORTING - QA/QC indicates incoherence between spatial and non-spatial data or with other data officially submitted

1.1 Map of Species range

Issue 7220 The range provided does not include the following Natura 2000 sites in which the species is mentioned

- 1 .map-range-spec-bombina-bombina.gml (cf. MAP: LTKAI0001)
- 2 .map-range-spec-liparis-loeselii.gml (cf. MAP: LTRAD0001)
- 3 .map-range-spec-maculinea-teleius.gml (cf. MAP: LTMOL0010, LTMOL0011)
- 4 .map-range-spec-vertigo-angustior.gml (cf. MAP: LTSVE0002)

Issue 7225 Spatial data occurs at distances greater than 250 km from the pSCIs/SACs sites that were established for that species

- 1 .map-range-spec-pulsatilla-patens.gml (cf. MAP: Over 250km)
- 2 .map-range-spec-vertigo-angustior.gml (cf. MAP: Over 250km)
- 3 .map-range-spec-vertigo-geyeri.gml (cf. MAP: Over 250km)

1.2 Map of Species distribution

Issue 7250 The distribution provided does not include the following Natura 2000 sites in which the species is mentioned

- 1 .map-distribution-aldrovanda-vesiculosa.gml (cf. MAP: LTIGN0026)
- 2 .map-distribution-cypripedium-calceolus.gml (cf. MAP: LTAKM0001, LTALY0001, LTPAN0001, LTTRA0007, LTZAR0007)
- 3 .map-distribution-dytiscus-latissimus.gml (cf. MAP: LTALY0005, LTIGN0026)
- 4 .map-distribution-euphydryas-aurinia.gml (cf. MAP: LTANY0014, LTKEL0010, LTPAN0005, LTSVE0016, LTSVE0033)
- 5 .map-distribution-liparis-loeselii.gml (cf. MAP: LTRAD0001)
- 6 .map-distribution-maculinea-teleius.gml (cf. MAP: LTMOL0010, LTMOL0011)
- 7 .map-distribution-myotis-dasychneme.gml (cf. MAP: LTLAZ0010, LTSIA0005, LTSIU0013)
- 8 .map-distribution-osmoderma-eremita.gml (cf. MAP: LTALY0001, LTALY0004, LTIGN0025, LTSVE0026, LTTRA0019, LTVIN0007, LTVIN0012)
- 9 .map-distribution-pulsatilla-patens.gml (cf. MAP: LTANY0001, LTANY0012, LTTRA0007)
- 10 .map-distribution-thesium-ebracteatum.gml (cf. MAP: LTANY0001, LTLAZ0019, LTVIN0005)
- 11 .map-distribution-vertigo-angustior.gml (cf. MAP: LTSVE0002)

Issue 7255 Spatial data occurs at distances greater than 250 km from the pSCIs/SACs sites that were established for that species

- 1 .map-distribution-spec-castor-fiber.gml (cf. MAP: Over 250km)
- 2 .map-distribution-spec-lampetra-planeri.gml (cf. MAP: Over 250km)

2.3.1 Surface range of the species

Issue 7750 Range in the XML file shows a difference of more than 5 % from the range calculated from the GML file in the corresponding biogeographical region (not buffered for calculation of minimum values and buffered by 15 km for maximum values). This discrepancy can be due to spatial data being generalized during creation of the GML

- 1 .species-aeshna-viridis.xml (cf. BOR: reported value: 65200; computed surface area from maps between: 29792.6 - 30500)
- 2 .species-agrimonia-pilosa.xml (cf. BOR: reported value: 21003; computed surface area from maps between: 64848.9 - 64948.3)

- 3 . species-arnica-montana.xml (cf. BOR: reported value: 13000; computed surface area from maps between: 19956.8 - 20500)
- 4 . species-barbastella-barbastellus.xml (cf. BOR: reported value: 65200; computed surface area from maps between: 2785 - 2800)
- 5 . species-barbus-barbus.xml (cf. BOR: reported value: 58168; computed surface area from maps between: 64848.9 - 64948.3)
- 6 . species-bombina-bombina.xml (cf. BOR: reported value: 65000; computed surface area from maps between: 37372.6 - 48172.1)
- 7 . species-boros-schneideri.xml (cf. BOR: reported value: 34856; computed surface area from maps between: 24528.2 - 25100)
- 8 . species-buxbaumia-viridis.xml (cf. BOR: reported value: 64900; computed surface area from maps between: 1836.5 - 2489.5)
- 9 . species-coregonus-lavaretus.xml (cf. BOR: reported value: 23; computed surface area from maps between: 365.4 - 500)
- 10 . species-coronella-austriaca.xml (cf. BOR: reported value: 65000; computed surface area from maps between: 5242.5 - 7071.5)
- 11 . species-cucujus-cinnaberinus.xml (cf. BOR: reported value: 13267; computed surface area from maps between: 19315.4 - 19400)
- 12 . species-dianthus-arenarius-ssp.-arenarius.xml (cf. BOR: reported value: 850; computed surface area from maps between: 773.9 - 800)
- 13 . species-dicranum-viride.xml (cf. BOR: reported value: 16300; computed surface area from maps between: 12513.6 - 12900)
- 14 . species-dryomys-nitedula.xml (cf. BOR: reported value: 65000; computed surface area from maps between: 7555 - 7600)
- 15 . species-dytiscus-latissimus.xml (cf. BOR: reported value: 32600; computed surface area from maps between: 18503.1 - 18900)
- 16 . species-emys-orbicularis.xml (cf. BOR: reported value: 65000; computed surface area from maps between: 14452 - 18191)
- 17 . species-eptesticus-nilssoni.xml (cf. BOR: reported value: 65200; computed surface area from maps between: 41070.8 - 41700)
- 18 . species-eptesticus-serotinus.xml (cf. BOR: reported value: 65200; computed surface area from maps between: 44979.4 - 45900)
- 19 . species-hirudo-medicinalis.xml (cf. BOR: reported value: 65200; computed surface area from maps between: 31693.6 - 32900)
- 20 . species-hyla-arborea.xml (cf. BOR: reported value: 65000; computed surface area from maps between: 1836.5 - 2489.5)
- 21 . species-lampetra-planeri.xml (cf. BOR: reported value: 65000; computed surface area from maps between: 47113.8 - 48100)
- 22 . species-linaria-loeselii.xml (cf. BOR: reported value: 90; computed surface area from maps between: 421 - 3100)
- 23 . species-lycaena-helle.xml (cf. BOR: reported value: 7530; computed surface area from maps between: 2758.1 - 3100)
- 24 . species-maculinea-teleius.xml (cf. BOR: reported value: 32600; computed surface area from maps between: 1836.5 - 2489.5)

30847.3 - 31000)

- 25 .species-myotis-brandtii.xml (cf. BOR: reported value: 65200; computed surface area from maps between: 25484.4 - 25700)
- 26 .species-myotis-dasycneme.xml (cf. BOR: reported value: 65200; computed surface area from maps between: 35342.4 - 35900)
- 27 .species-myotis-daubentonii.xml (cf. BOR: reported value: 65200; computed surface area from maps between: 52034.7 - 52800)
- 28 .species-myotis-nattereri.xml (cf. BOR: reported value: 65200; computed surface area from maps between: 30119.2 - 30700)
- 29 .species-nyctalus-leisleri.xml (cf. BOR: reported value: 65200; computed surface area from maps between: 9087.1 - 9400)
- 30 .species-nyctalus-noctula.xml (cf. BOR: reported value: 65200; computed surface area from maps between: 49354 - 50500)
- 31 .species-osmoderma-eremita.xml (cf. BOR: reported value: 8280; computed surface area from maps between: 12597.3 - 12600)
- 32 .species-oxyporus-mannerheimii.xml (cf. BOR: reported value: 10; computed surface area from maps between: 100 - 100)
- 33 .species-pelecus-cultratus.xml (cf. BOR: reported value: 413; computed surface area from maps between: 73.2 - 300)
- 34 .species-pelobates-fuscus.xml (cf. BOR: reported value: 6000; computed surface area from maps between: 33068.7 - 34500)
- 35 .species-pipistrellus-nathusii.xml (cf. BOR: reported value: 65200; computed surface area from maps between: 59731.5 - 60600)
- 36 .species-pipistrellus-pipistrellus.xml (cf. BOR: reported value: 65200; computed surface area from maps between: 55530.8 - 56300)
- 37 .species-plecotus-auritus.xml (cf. BOR: reported value: 65200; computed surface area from maps between: 53970.1 - 55000)
- 38 .species-proserpinus-proserpina.xml (cf. BOR: reported value: 10000; computed surface area from maps between: 12792.1 - 13400)
- 39 .species-pulsatilla-patens.xml (cf. BOR: reported value: 45000; computed surface area from maps between: 64848.9 - 64948.3)
- 40 .species-rana-ridibunda.xml (cf. BOR: reported value: 2200; computed surface area from maps between: 18986.1 - 19300)
- 41 .species-sabanejewia-aurata.xml (cf. BOR: reported value: 15061; computed surface area from maps between: 2337.5 - 2400)
- 42 .species-salmo-salar.xml (cf. BOR: reported value: 51835; computed surface area from maps between: 42508.3 - 43200)
- 43 .species-sphagnum-pulchrum.xml (cf. BOR: reported value: 65200; computed surface area from maps between: 200 - 200)
- 44 .species-sphagnum-quinquefarium.xml (cf. BOR: reported value: 4900; computed surface area from maps between: 5205.1 - 5400)
- 45 .species-thymallus-thymallus.xml (cf. BOR: reported value: 27761; computed surface area from maps between:

18337.8 - 18800)

- 46 .species-triturus-cristatus.xml (cf. BOR: reported value: 65000; computed surface area from maps between: 40669.6 - 45962.9)
- 47 .species-unio-crassus.xml (cf. BOR: reported value: 65000; computed surface area from maps between: 39313.7 - 46109)
- 48 .species-vertigo-angustior.xml (cf. BOR: reported value: 65000; computed surface area from maps between: 18356.6 - 19352.7)
- 49 .species-vertigo-geyeri.xml (cf. BOR: reported value: 65000; computed surface area from maps between: 4901 - 5000)
- 50 .species-vertigo-moulinsiana.xml (cf. BOR: reported value: 65000; computed surface area from maps between: 5289.5 - 6509.8)
- 51 .species-vespertilio-murinus.xml (cf. BOR: reported value: 65200; computed surface area from maps between: 13889.8 - 14000)

Spatial Data not compliant with QA/QC procedures

	<i>Errors</i>	<i>Missing</i>	<i>Incoherent</i>
1 map-distribution-3130.gml			1
2 map-distribution-3140.gml			1
3 map-distribution-3150.gml			1
4 map-distribution-6210.gml			1
5 map-distribution-6230.gml			1
6 map-distribution-6410.gml			1
7 map-distribution-6430.gml			1
8 map-distribution-6510.gml			1
9 map-distribution-6530.gml			1
10 map-distribution-7120.gml			1
11 map-distribution-7140.gml			1
12 map-distribution-7160.gml			1
13 map-distribution-7210.gml			1
14 map-distribution-7220.gml			1
15 map-distribution-7230.gml			1
16 map-distribution-9020.gml			1
17 map-distribution-9070.gml			1
18 map-distribution-9080.gml			1
19 map-distribution-9180.gml			1
20 map-distribution-9190.gml			1
21 map-distribution-91E0.gml			1
22 map-distribution-aldrovanda-vesiculosa.gml			1
23 map-distribution-cypripedium-calceolus.gml			1
24 map-distribution-dytiscus-latissimus.gml			1
25 map-distribution-euphydryas-aurinia.gml			1
26 map-distribution-liparis-loeselii.gml			1
27 map-distribution-maculinea-teleius.gml			1
28 map-distribution-myotis-dasycneme.gml			1
29 map-distribution-osmoderma-eremita.gml			1
30 map-distribution-pulsatilla-patens.gml			1
31 map-distribution-spec-aeshna-viridis.gml	1		
32 map-distribution-spec-arnica-montana.gml	1		
33 map-distribution-spec-bison-bonasus.gml		1	
34 map-distribution-spec-callimorpha-quadrupunctaria.gml		1	
35 map-distribution-spec-castor-fiber.gml	1		1
36 map-distribution-spec-cobitis-taenia.gml	1		
37 map-distribution-spec-cypripedium-calceolus.gml	1		
38 map-distribution-spec-dytiscus-latissimus.gml	1		
39 map-distribution-spec-eptesicus-serotinus.gml	1		
40 map-distribution-spec-hirudo-medicinalis.gml	1		
41 map-distribution-spec-hyla-arborea.gml	1		
42 map-distribution-spec-lacerta-agilis.gml	1		
43 map-distribution-spec-lampetra-planeri.gml	1		1
44 map-distribution-spec-liparis-loeselii.gml	1		
45 map-distribution-spec-lopinga-achine.gml	1		
46 map-distribution-spec-lycaena-helle.gml	1		
47 map-distribution-spec-maculinea-arion.gml	1		
48 map-distribution-spec-maculinea-teleius.gml	1		
49 map-distribution-spec-meesia-longiseteta.gml		1	

50	map-distribution-spec-mesosa-myops.gml		1	
51	map-distribution-spec-muscardinus-avellanarius.gml	1		
52	map-distribution-spec-myotis-brandtii.gml	1		
53	map-distribution-spec-myotis-dasycneme.gml	1		
54	map-distribution-spec-myotis-daubentonii.gml	1		
55	map-distribution-spec-nyctalus-leisleri.gml	1		
56	map-distribution-spec-nyctalus-noctula.gml	1		
57	map-distribution-spec-osmoderma-eremita.gml	1		
58	map-distribution-spec-pelobates-fuscus.gml	1		
59	map-distribution-spec-plecotus-auritus.gml	1		
60	map-distribution-spec-rana-ridibunda.gml	1		
61	map-distribution-spec-rhodeus-sericeus-amarus.gml	1		
62	map-distribution-spec-salmo-salar.gml	1		
63	map-distribution-spec-sicista-betulina.gml	1		
64	map-distribution-spec-sphagnum-papillosum.gml	1		
65	map-distribution-spec-sphagnum-pulchrum.gml	1		
66	map-distribution-spec-sphagnum-wulfianum.gml	1		
67	map-distribution-spec-thesium-ebracteatum.gml	1		
68	map-distribution-spec-thymallus-thymallus.gml	1		
69	map-distribution-spec-triturus-cristatus.gml	1		
70	map-distribution-spec-unio-crassus.gml	1		
71	map-distribution-spec-vertigo-angustior.gml	1		
72	map-distribution-spec-vertigo-mouliinsiana.gml	1		
73	map-distribution-spec-vespertilio-murinus.gml	1		
74	map-distribution-thesium-ebracteatum.gml			1
75	map-distribution-vertigo-angustior.gml			1
76	map-favourable-range-spec-bison-bonasmus.gml	1		
77	map-favourable-range-spec-callimorpha-quadrupunctaria.gml	1		
78	map-range-9190.gml			1
79	map-range-spec-bison-bonasmus.gml	1		
80	map-range-spec-bombina-bombina.gml			1
81	map-range-spec-callimorpha-quadrupunctaria.gml	1		
82	map-range-spec-liparis-loeselii.gml			1
83	map-range-spec-maculinea-teleius.gml			1
84	map-range-spec-meesia-longiseta.gml	1		
85	map-range-spec-mesosa-myops.gml	1		
86	map-range-spec-pulsatilla-patens.gml			1
87	map-range-spec-vertigo-angustior.gml			2
88	map-range-spec-vertigo-geyeri.gml			1
		<i>Errors</i>	<i>Missing</i>	<i>Incoherent</i>
<u>GML Total number of issues :</u>		<u>39</u>	<u>10</u>	<u>42</u>

Non-spatial Data not compliant with QA/QC procedures

	<i>Errors</i>	<i>Missing</i>	<i>Incoherent</i>	<i>Not assessed</i>
1				
2				1
3	1			
4				1
5				1
6				1

7	habitatype-2140.xml			1	
8	habitatype-2170.xml			1	
9	habitatype-2180.xml			1	
10	habitatype-2190.xml			1	
11	habitatype-2320.xml			1	
12	habitatype-3190.xml		1	1	
13	habitatype-4030.xml			1	
14	habitatype-8310.xml		2	1	
15	habitatype-9160.xml			1	
16	habitatype-9190.xml			1	
17	habitatype-91T0.xml			1	
18	species-aeshna-viridis.xml			1	
19	species-agrimonia-pilosa.xml			1	
20	species-arnica-montana.xml			1	
21	species-barbastella-barbastellus.xml			1	
22	species-barbus-barbus.xml	1		1	1
23	species-bombina-bombina.xml	1		1	
24	species-boros-schneideri.xml			1	
25	species-botrychium-simplex.xml		2		
26	species-buxbaumia-viridis.xml			1	
27	species-coregonus-lavaretus.xml	1		1	
28	species-coronella-austriaca.xml			1	
29	species-cucujus-cinnaberinus.xml			1	
30	species-cypripedium-calceolus.xml	1			
31	species-dianthus-arenarius-ssp.-arenarius.xml			1	
32	species-dicranum-viride.xml			1	
33	species-dryomys-nitedula.xml	1		1	
34	species-dytiscus-latissimus.xml			1	
35	species-emys-orbicularis.xml			1	
36	species-eptesicus-nilssoni.xml			1	
37	species-eptesicus-serotinus.xml			1	
38	species-hirudo-medicinalis.xml			1	
39	species-hyla-arborea.xml			1	
40	species-lampetra-planeri.xml			1	
41	species-linaria-loeselii.xml			1	
42	species-lycaena-helle.xml			1	
43	species-lynx-lynx.xml		2		
44	species-maculinea-teleius.xml			1	
45	species-myotis-brandtii.xml			1	1
46	species-myotis-dasychneme.xml			1	
47	species-myotis-daubentonii.xml			1	
48	species-myotis-nattereri.xml			1	
49	species-nyctalus-leisleri.xml			1	1
50	species-nyctalus-noctula.xml			1	
51	species-ophiogomphus-cecilia.xml	1			
52	species-osmoderma-eremita.xml			1	
53	species-oxyporus-mannerheimii.xml			1	1
54	species-pelecus-cultratus.xml			1	
55	species-pelobates-fuscus.xml			1	
56	species-pipistrellus-nathusii.xml			1	
57	species-pipistrellus-pipistrellus.xml			1	

58	species-plecotus-auritus.xml			1	
59	species-proserpinus-proserpina.xml			1	1
60	species-pulsatilla-patens.xml			1	
61	species-rana-ridibunda.xml			1	
62	species-rana-temporaria.xml	1			
63	species-sabanejewia-aurata.xml			1	
64	species-salmo-salar.xml	1		1	
65	species-sphagnum-pulchrum.xml			1	
66	species-sphagnum-quinquefarium.xml			1	
67	species-thymallus-thymallus.xml			1	
68	species-triturus-cristatus.xml			1	
69	species-unio-crassus.xml			1	
70	species-vertigo-angustior.xml			1	
71	species-vertigo-geyeri.xml			1	
72	species-vertigo-moulinsiana.xml			1	
73	species-vespertilio-murinus.xml			1	
		<i>Errors Missing Incoherent Not assessed</i>			
<u>XML Total number of issues :</u>		<u>11</u>	<u>5</u>	<u>66</u>	<u>5</u>