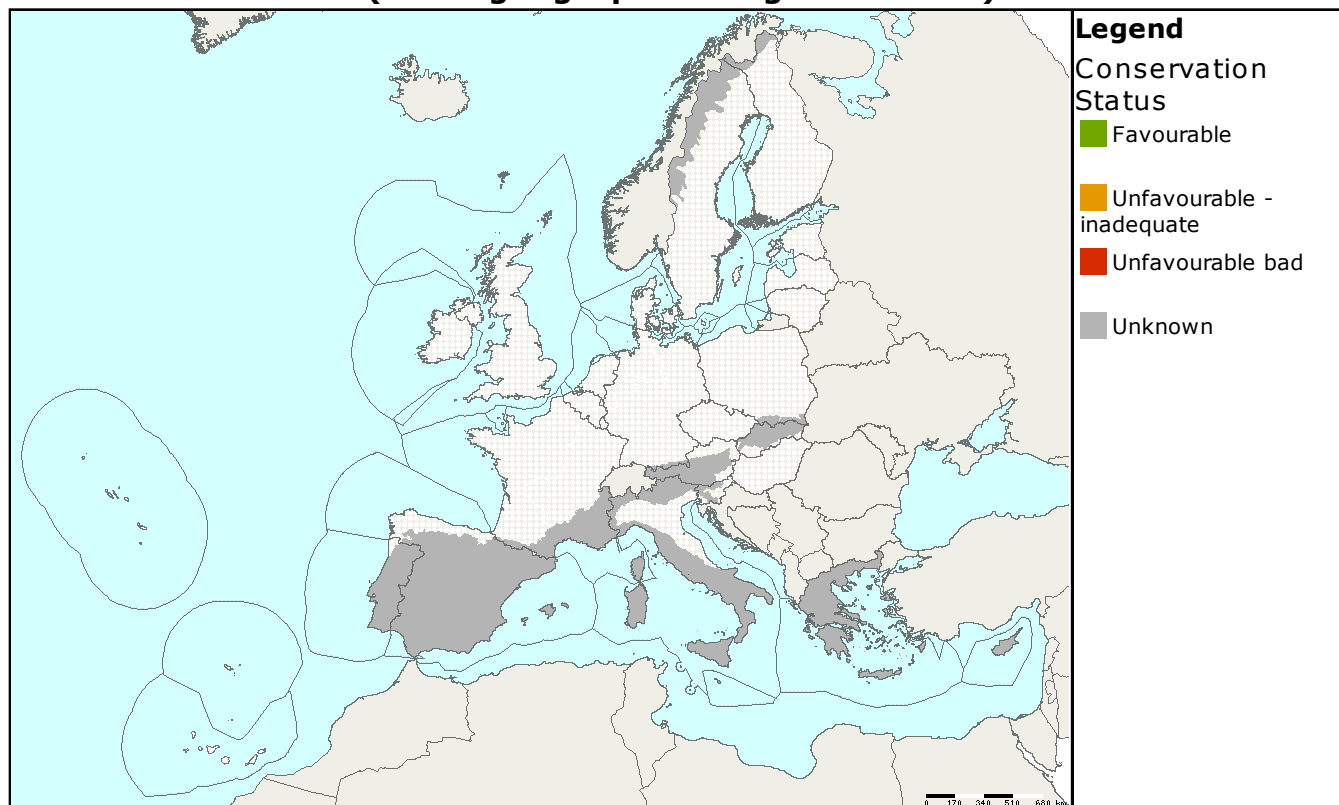


Species name: **Graellsia isabellae**
Annex: **II, V**

Species group: **Invertebrates**
Regions: **ALP MED**

Assessments of conservation status at the European level (all biogeographical regions - EU25)

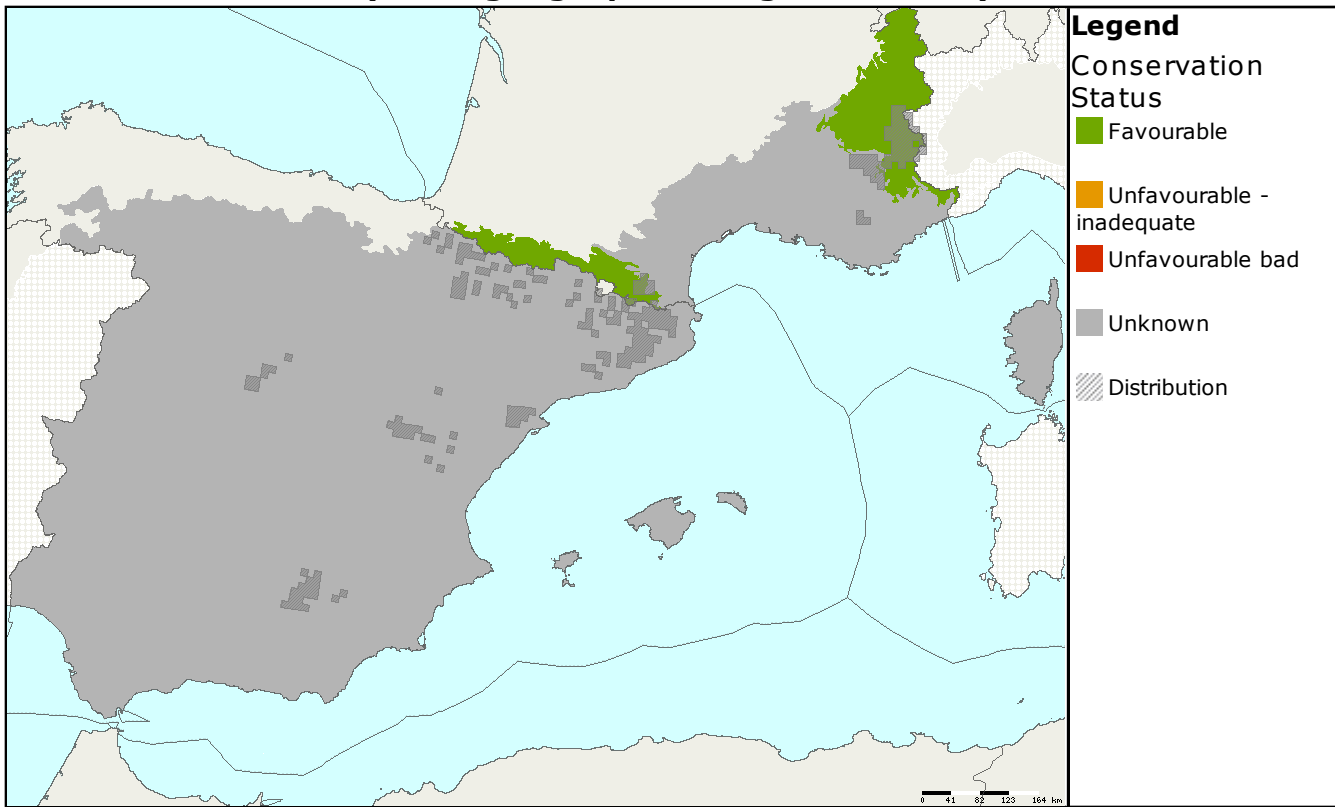


MS	Region	Conservation status assessment					Population size & unit	Population Trend
		Range	Population	Habitat	Future prospects	Overall		
EU25	ALP						95 grids	X
EU25	MED						170 grids	

The Spanish Moon Silkmoth is a species of moth occurring in the mountain regions of the south-western France and the western Spain. Its distribution is determined by sub-mediterranean climatic conditions. It occurs in open light mountain and subalpine pine forests mostly on calcareous substrates.

The conservation status in both the Alpine and the Mediterranean biogeographical regions is 'unknown'. The reports provided are incomplete. Better information is required.

Assessments of conservation status as reported by Member states (all biogeographical regions - EU25)



MS	Region	Conservation status assessment					Size&unit	Population trend	Data quality
		Range	Population	Habitat	Future prospects	Overall			
ES	ALP						4 - 4 loc.	X	3
FR	ALP						N/A x	X	3
ES	MED						146 - 146 loc.	N/A	
FR	MED						N/A indiv.	X	3

Data quality is based on as assessment by each Member State, 1 = good, 2 = medium, 3 = poor

This information is derived from the Member State national reports submitted to the European Commission under Article 17 of the Habitats Directive in 2007 and covering the period 2001-2006. More detailed information is available at <http://biodiversity.eionet.europa.eu/article17>