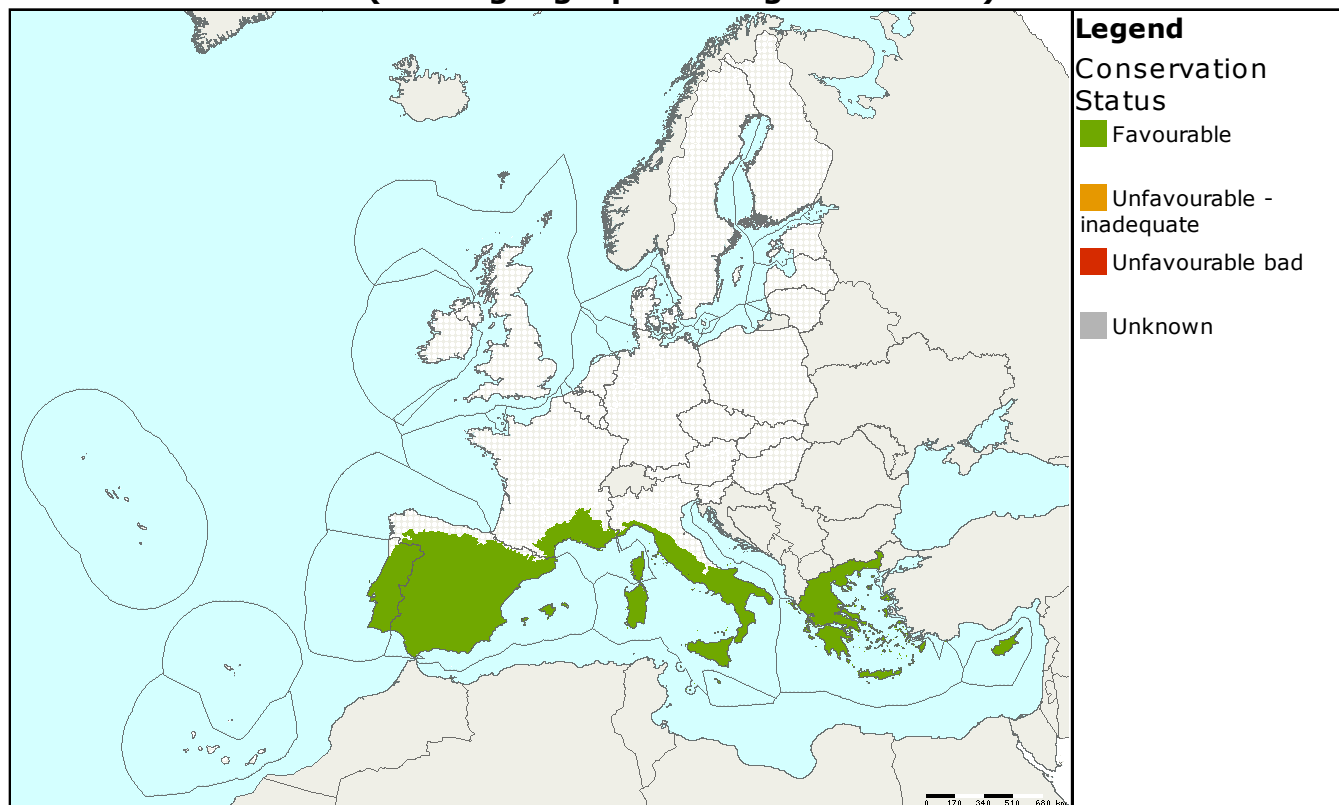


Species name: **Discoglossus montalentii**
Annex: **II, IV**

Species group: **Amphibians & Reptiles**
Regions: **MED**

Assessments of conservation status at the European level (all biogeographical regions - EU25)

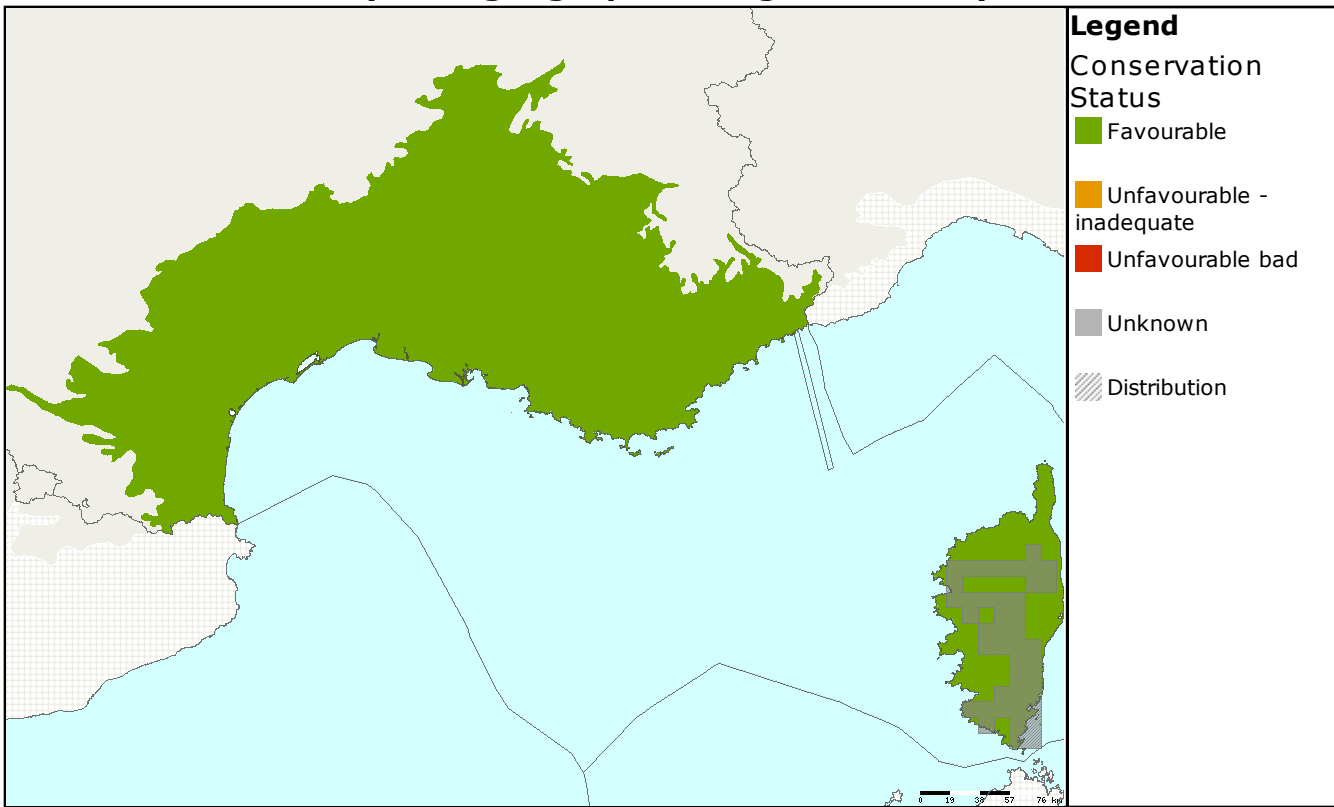


MS	Region	Conservation status assessment					Population size & unit	Population Trend
		Range	Population	Habitat	Future prospects	Overall		
EU25	MED						20 loc.	=

The Corsican painted frog is endemic to Corsica, France where it is mainly found in the central part of the island. It is associated with flowing waters and is found in streams especially in forested areas in higher altitudes.

The conservation status is 'favourable'. No major threats were recorded and the species is not considered particularly endangered in France, its populations are stable and have sufficient size. It is included in 2008 IUCN Red List as 'near threatened' mainly due to restricted natural range.

**Assessments of conservation status as reported by Member states
(all biogeographical regions - EU25)**



MS	Region	Conservation status assessment					Size&unit	Population trend	Data quality
		Range	Population	Habitat	Future prospects	Overall			
FR	MED						20 - 20 loc.	=	1

Data quality is based on an assessment by each Member State, 1 = good, 2 = medium, 3 = poor

This information is derived from the Member State national reports submitted to the European Commission under Article 17 of the Habitats Directive in 2007 and covering the period 2001-2006. More detailed information is available at <http://biodiversity.eionet.europa.eu/article17>