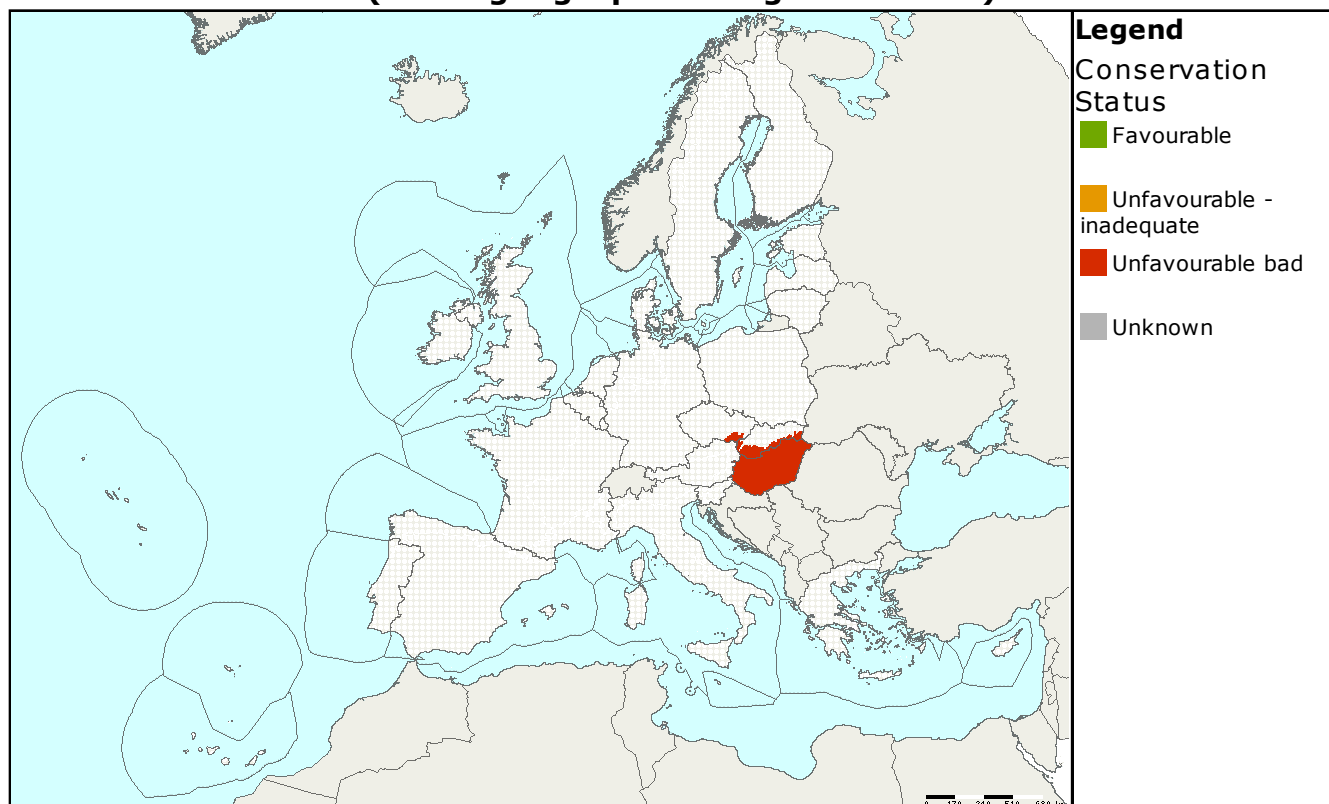


Habitat code: **91N0**
 Habitat name: **Pannonic inland sand dune thicket (Junipero-Populetum albae)**

Habitat group: **forests**
 Regions: **PAN**

Assessments of conservation status at the European level (all biogeographical regions - EU25)

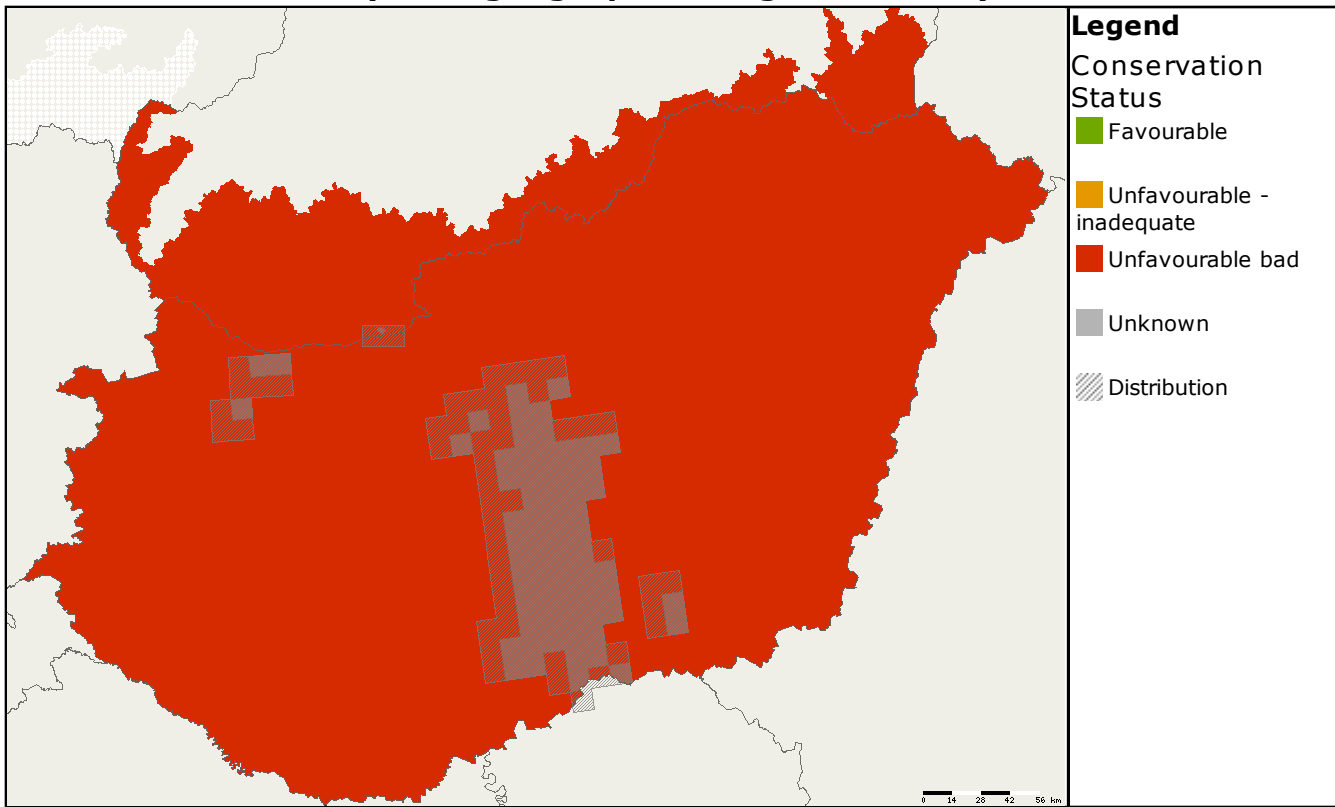


MS	Biogeographic Region	Conservation status assessment					Km ²	Trend in area
		Range	Area	Structure & function	Future prospects	Overall		
EU25	PAN						17	

This xerophilous habitat is a mosaic of open scrub or woodlands with juniper (*Juniperus communis*) and poplars (*Populus* spp) with open or closed sand steppe grasslands. The habitat occurs on sands and on sand dunes of the Pannonic plain.

The conservation status is 'unfavourable-bad'. The habitat area is much lower than favourable, but it is increasing. However the habitat is still threatened by forestry management practices and by the invasion of alien tree species.

**Assessments of conservation status as reported by Member states
(all biogeographical regions - EU25)**



MS	Biogeographic Region	Conservation status assessment					Km ²	Trend in area	Data quality
		Range	Area	Structure & function	Future prospects	Overall			
HU	PAN						16	+	1
SK	PAN						0.75	-	2

Data quality is based on as assessment by each Member State, 1 = good, 2 = medium, 3 = poor

This information is derived from the Member State national reports submitted to the European Commission under Article 17 of the Habitats Directive in 2007 and covering the period 2001-2006. More detailed information is available at

<http://biodiversity.eionet.europa.eu/article17>