

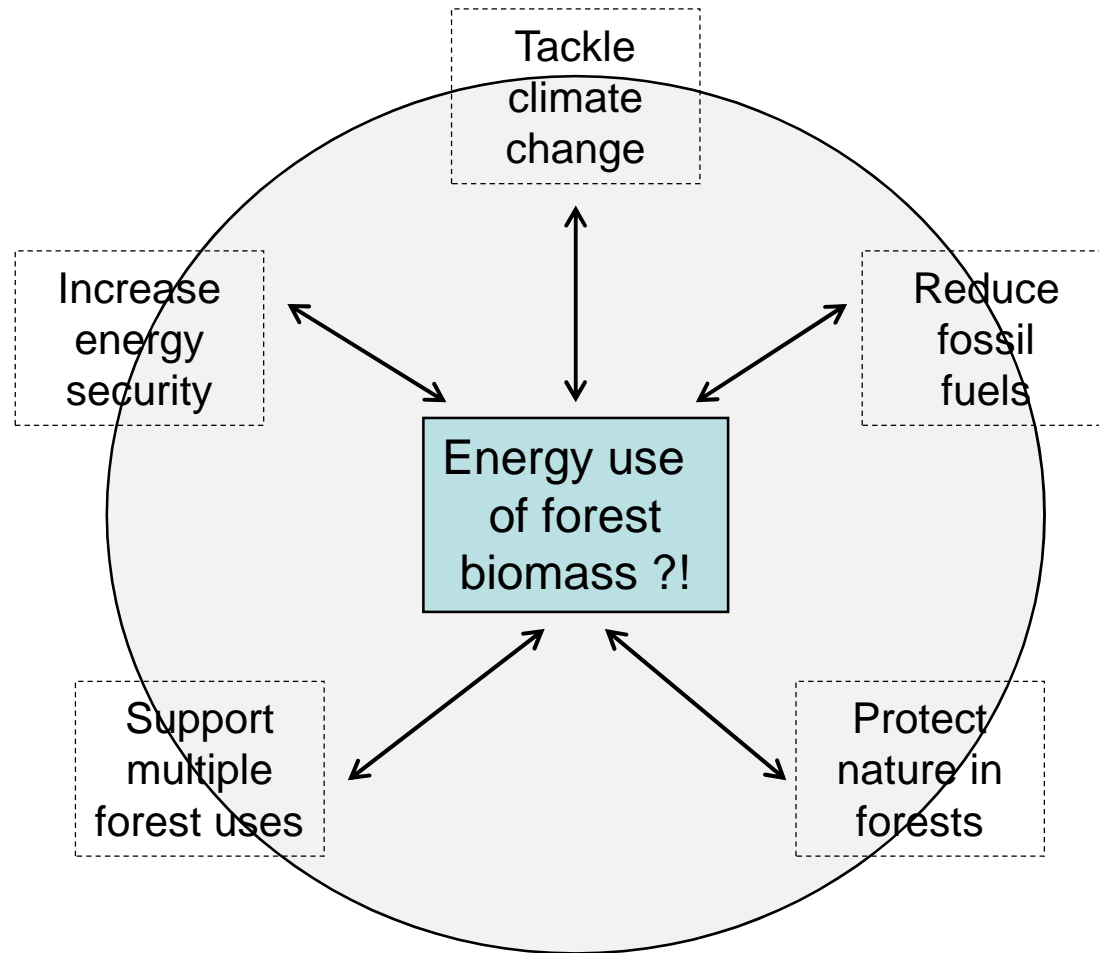
# Questions arising from the 2013 EEA study - focus on forest biomass

Jan-Erik Petersen  
European Environment Agency

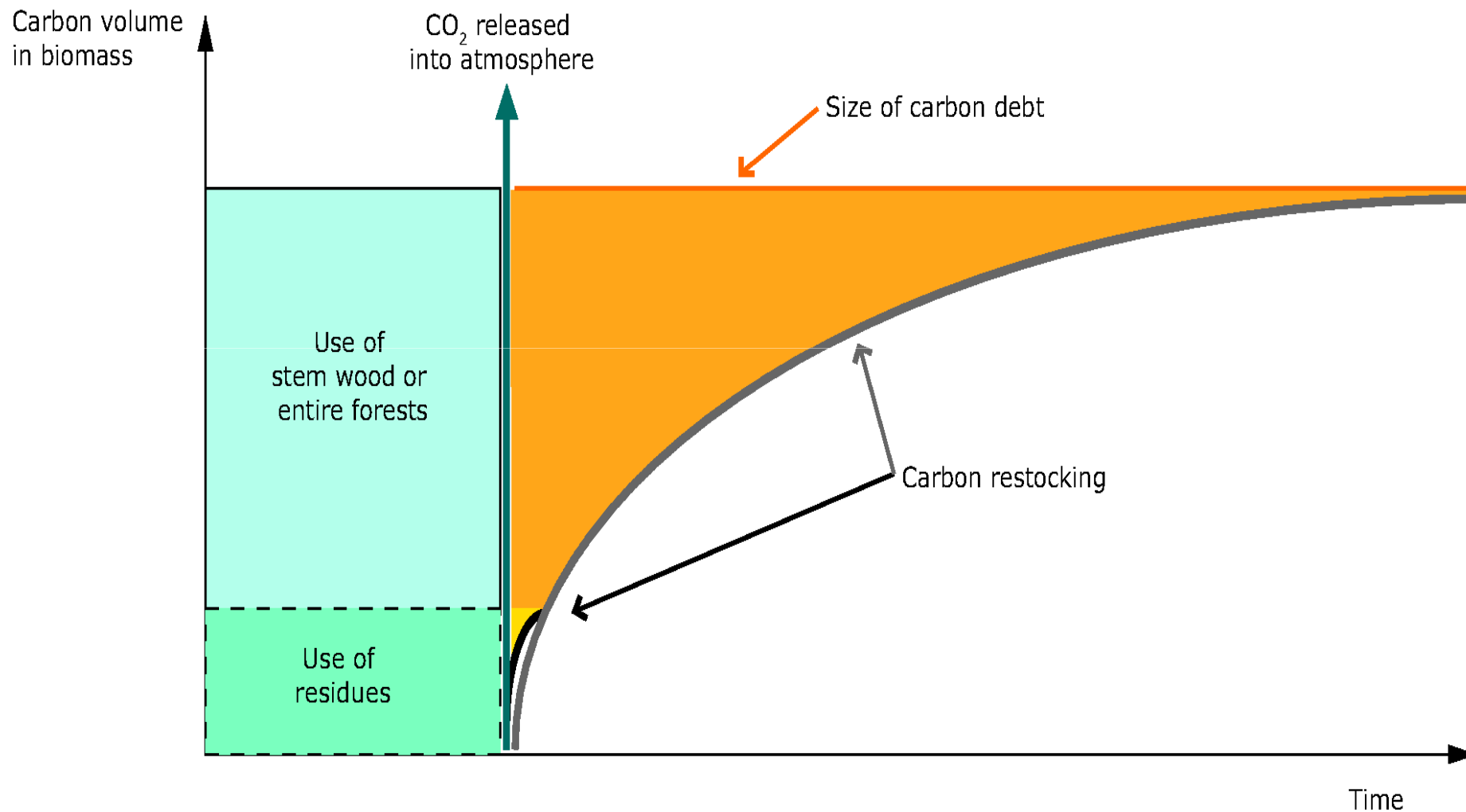
# What is the starting point ?

- Forests provide multiple services to society:
  - Timber for construction & housing
  - Biomass for paper industry & other industries
  - (Rest)wood for heating and other energy sources
  - Climate and water regulation, protection of soils
  - Opportunities for recreation, hunting etc.
  
- European forests are:
  - Stable or growing but intensively managed
  - An important carbon pool (which is currently growing)
  - Important for biodiversity which is under threat

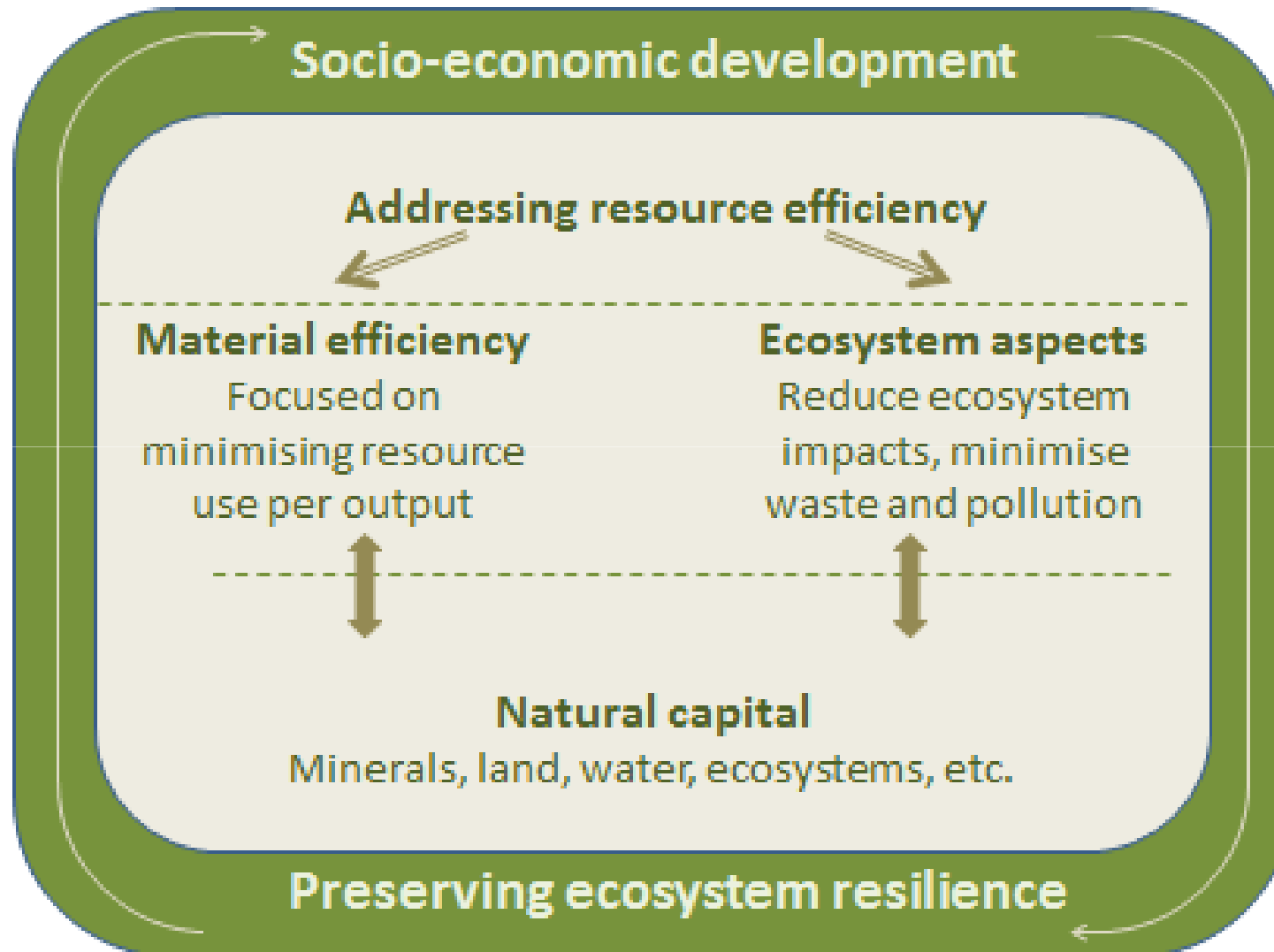
# What is the end point ?



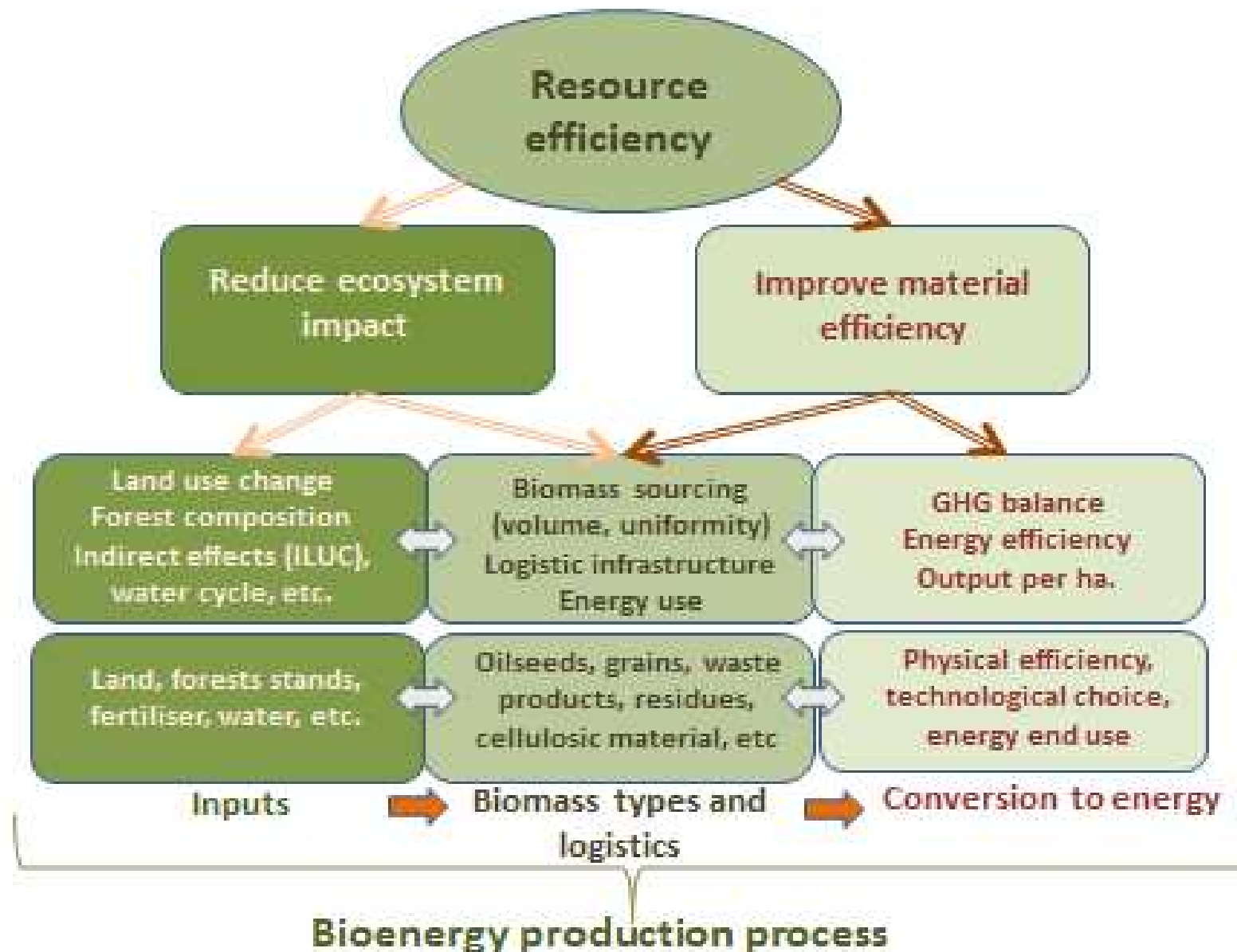
# A simplified illustration of forest 'carbon debt'



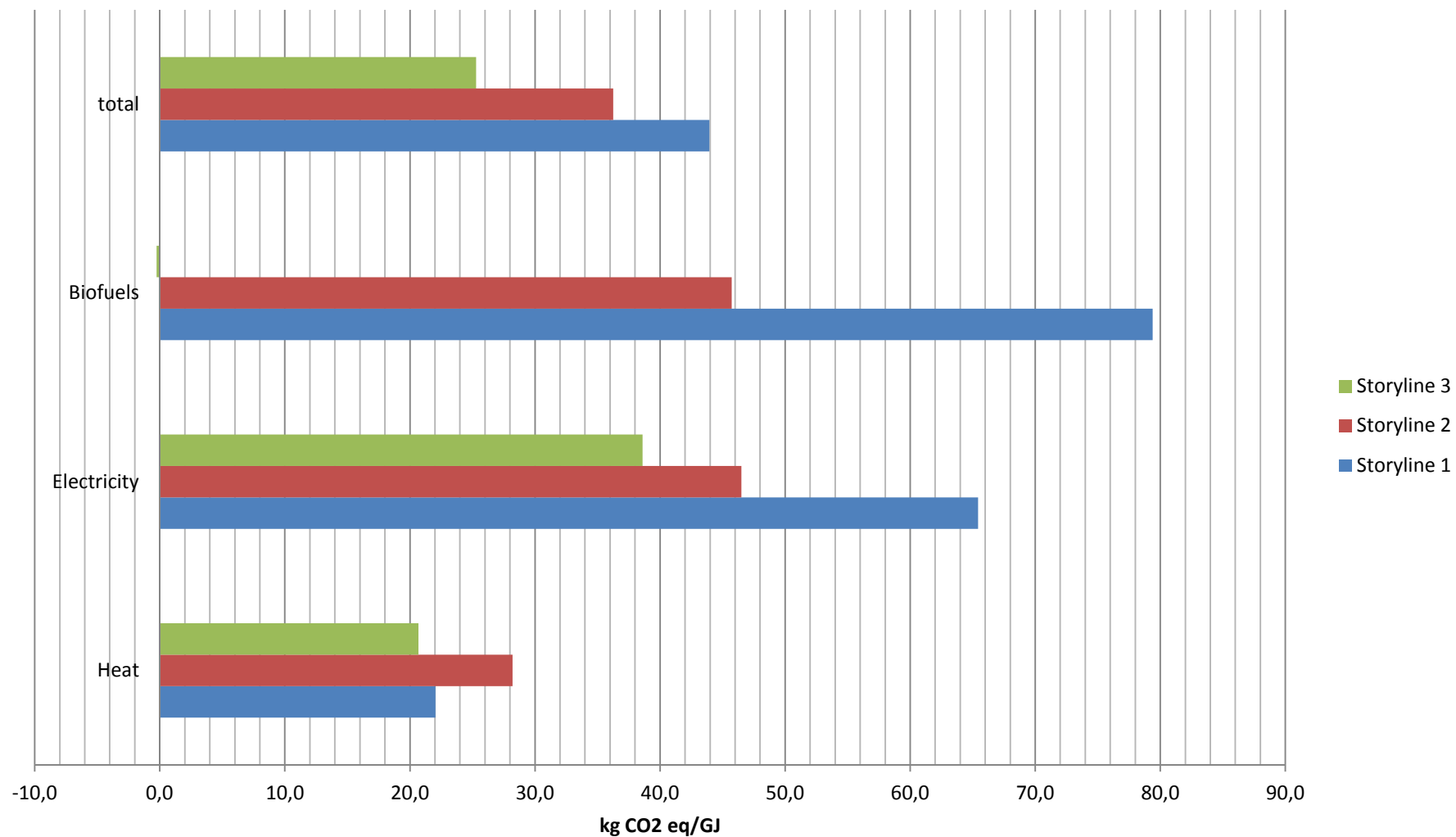
# The two aspects of resource efficiency



# Key factors for assessing bioenergy options



# GHG emissions from domestic & imported biomass (agriculture, forest, waste)



# Some open questions

- Where does the forest carbon debt concept apply? Historic v. future (energy) use
- What is the composition of current forest biomass use, across all sectors?
- What will be the composition of future forest biomass use, across all sectors?
- What is your carbon baseline? Role of carbon sink function of growing forests?
- How to account for the diversity of European forests and their management?



Thank you for your attention!

[Jan-Erik.Petersen@eea.europa.eu](mailto:Jan-Erik.Petersen@eea.europa.eu)