



# IDENTIFYING AND MAPPING HVN FARMLAND AND HNV FARMS IN FRANCE

HNV Workshop

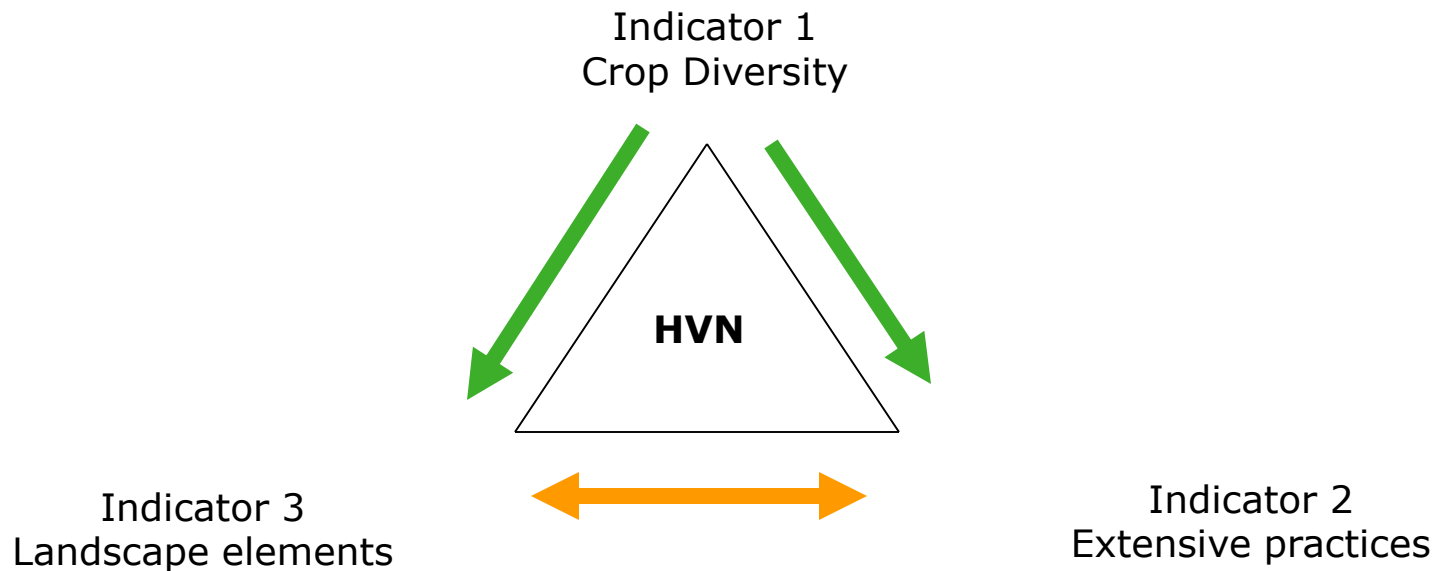
*Vienna- 14th of October 2019*

**Philippe POINTEREAU et Frédéric COULON**



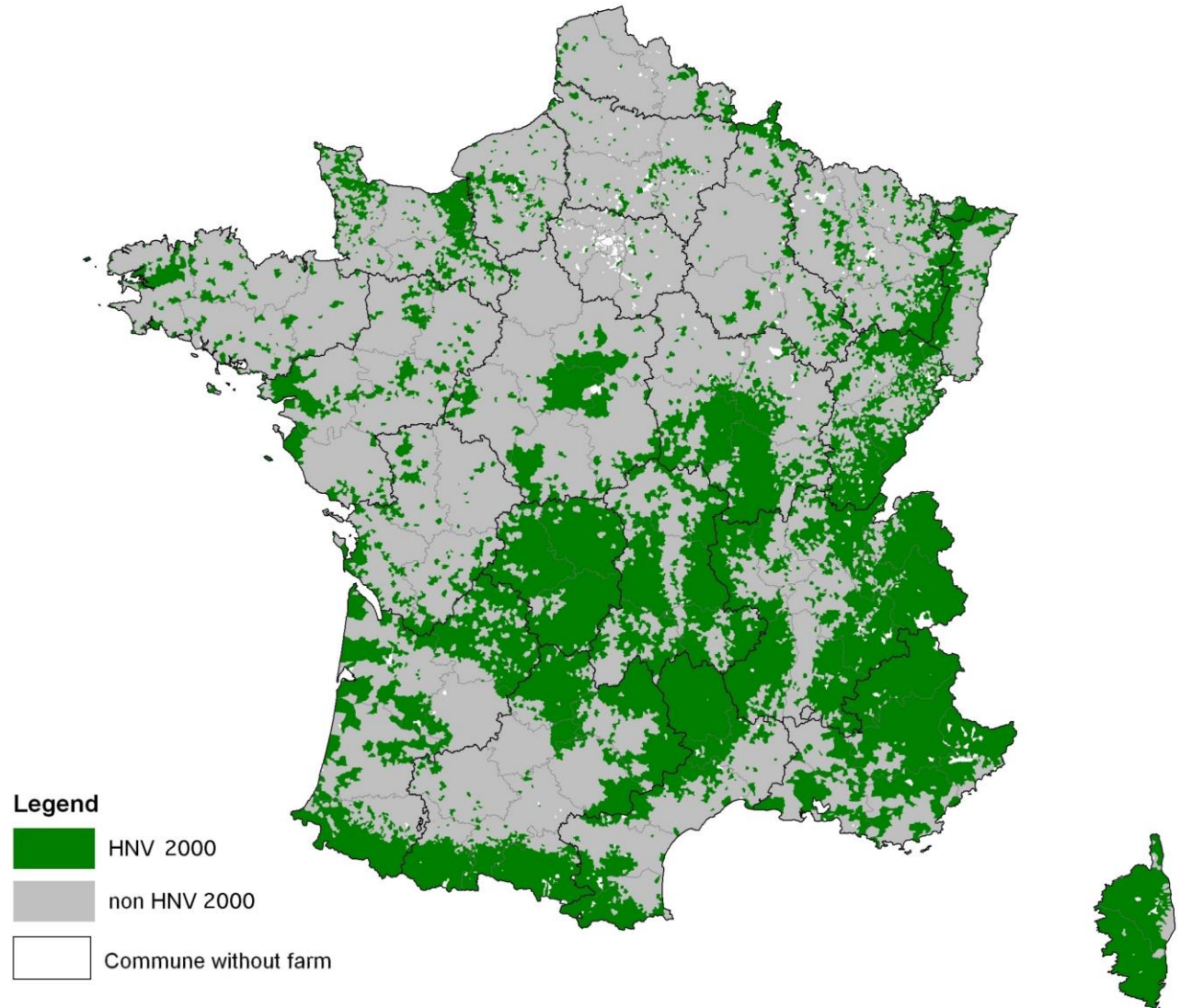
# Methodology do define and locate HNV Farmland area In France (SOLAGRO/JRC)

- A farming system approach
- Scoring based on 3 main indicators characterizing farm practices and farming system
- At farm level or at commune level

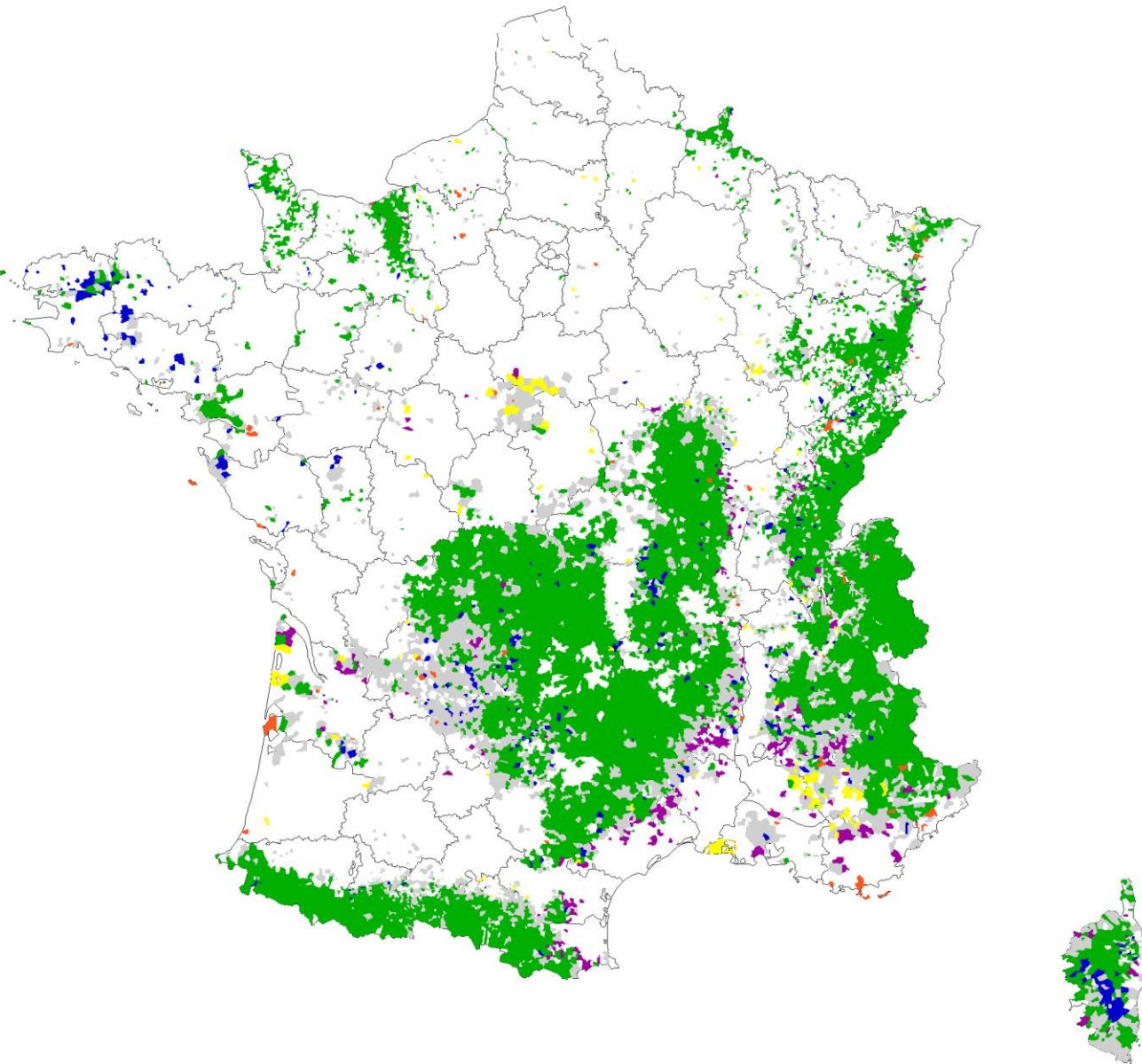


# HNV Farmland at municipality scale in 2000

- 7 927 915 ha for a threshold of 25% of the UAA (score 14.78/30)
- 85% of the extensive permanent grasslands
- 85% of summer pastures
- 47% of the productive permanent grasslands
- 91% of wet grasslands
- 60% of low input cereal crops
- 44% of hedgerows
- 55% of traditional orchards
- 47% of the communes with ponds
- 55% of the LU of LFA
- 91% of the surface outside Vulnerable zones
- 98% of the communes of National Parks



# Principal types of HVN farming system



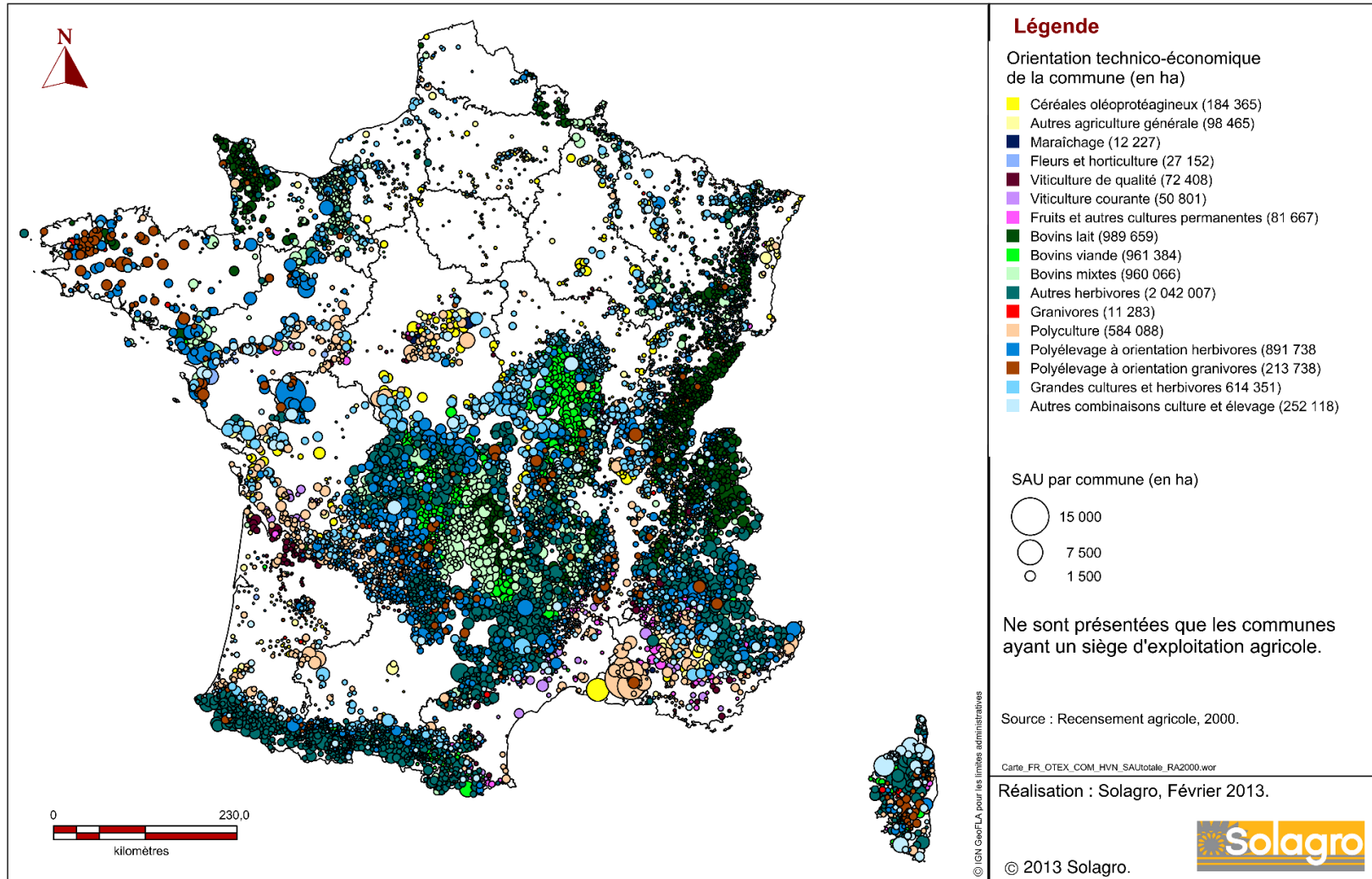
## Legend

Type of farming

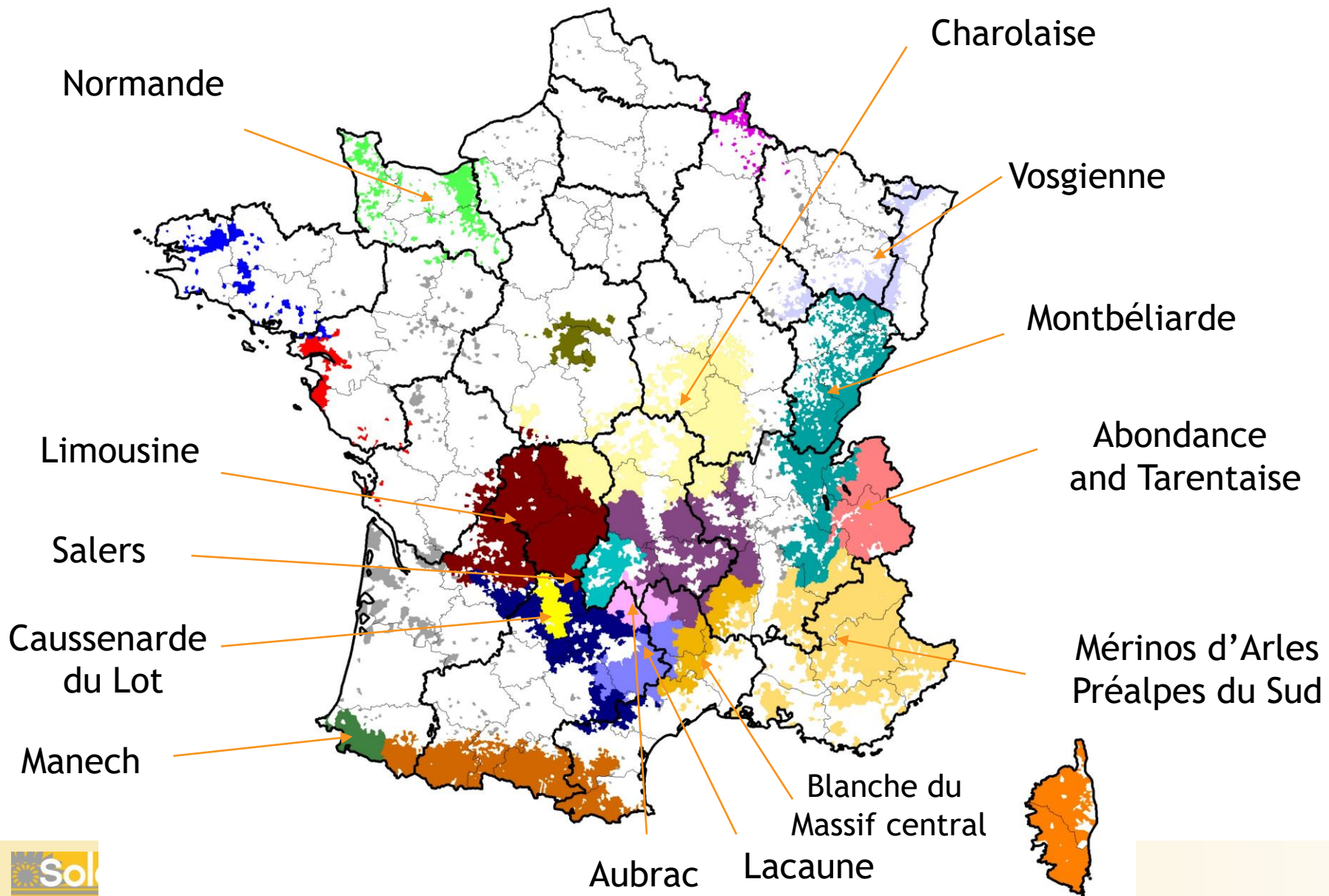
- Fieldcrops
- Horticulture
- Wines
- Grazing livestock
- Granivore
- Mixed



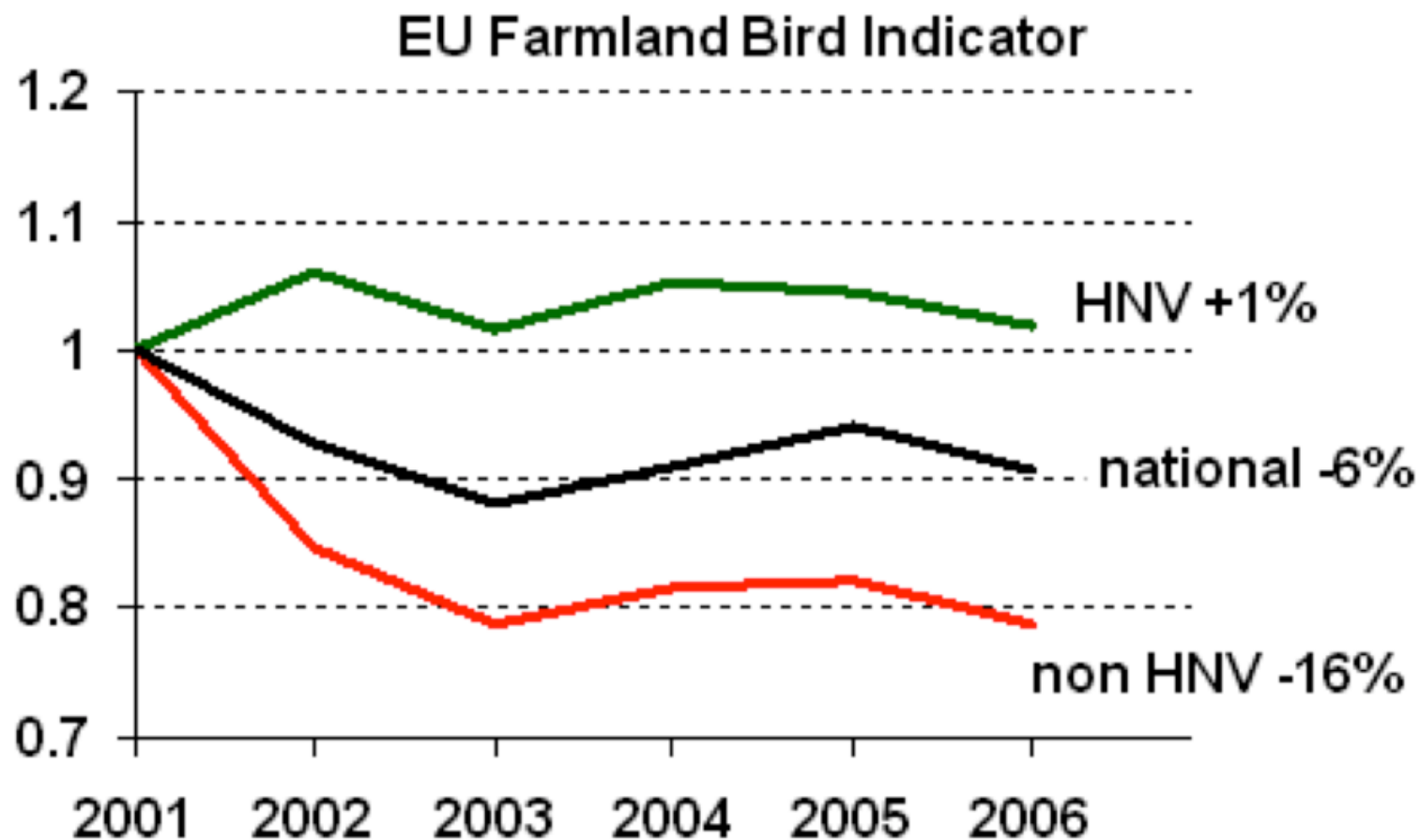
**Carte 5 : Orientation technico-économique et la surface agricole utile et pâturage collectifs des communes à haute valeur naturelle en 2000**

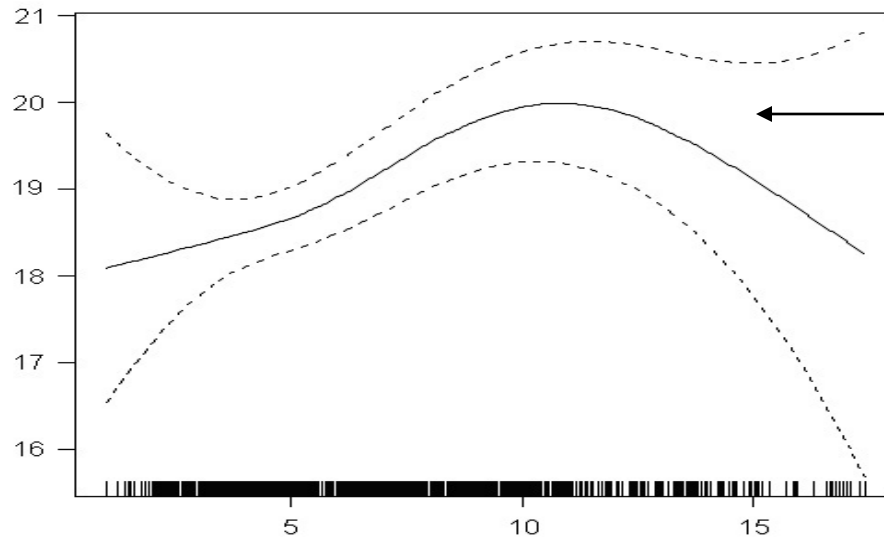


# Typology of the different HNV areas in France in 2000 based on landraces



# Farmland Birds population trends in France in HNV areas





Maximum at 11 points



Saxicola rubetra

HNVF ratio	SPEC species	Annex I species	Total species
> 60 %	18%	20%	14%
40-60 %	21%	27%	19%
25-40 %	24%	13%	36%
<b>Total &gt; 25%</b>	<b>62%</b>	<b>60%</b>	<b>69%</b>
15-25 %	26%	20%	22%
< 15 %	12%	20%	8%
<b>Total &lt; 25 %</b>	<b>38%</b>	<b>40%</b>	<b>31%</b>





**Gyps fulvus**



*Pyrrhocorax pyrrhocorax*



*Lanius collurio*



# Key points for breeding farms with high Nature Value



Dense bocage associated with wet grasslands and ponds

Low inputs : mineral nitrogen and pesticides

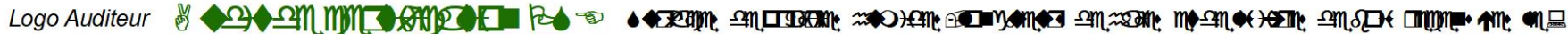
Permanent grasslands with long rotation cereals and temporary grasslands

# Data sources to calculate the 3 indicators

	Main data sources	Crop Diversity	Extensive Practices	Landscape elements
<b>Solagro/JRC methodology</b>	FSS 2000, Grassland Survey and National Forest Survey	UAA at municipality Level	Types of crops, yield of crops and mineral Nitrogen on grasslands	Length of hedgerows and forest edges, traditional orchards, ponds and wet grasslands
<b>Farm level</b>	Data of the farms, LPIS and photos	CAP declaration	Mineral nitrogen fertilization on fodder surfaces and pesticides treatments for crops	Length of hedgerows and forest edges, traditional orchards, ponds and wet grasslands



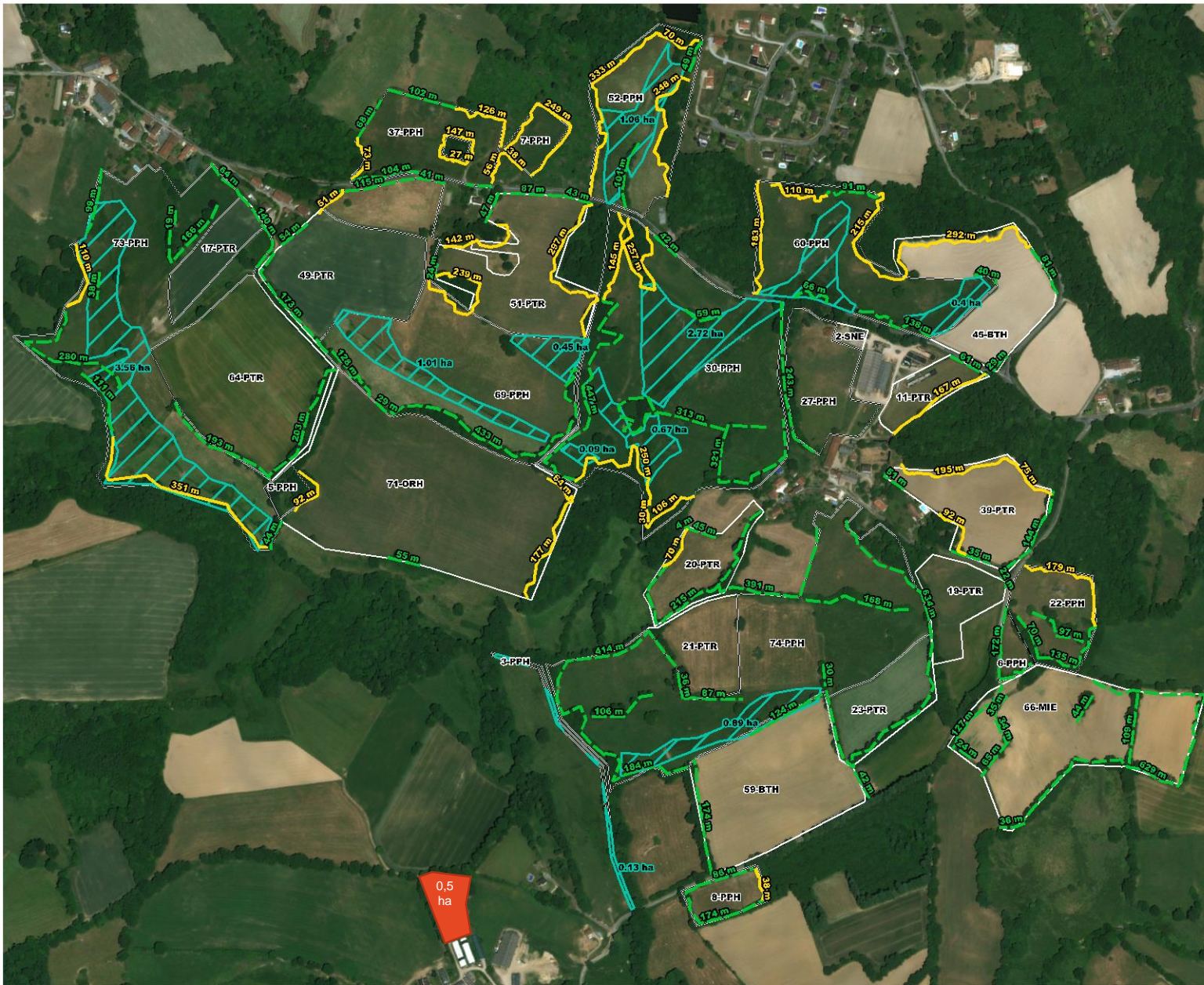
# Map of Ecological Infrastructures



Page 2/5  
Nom de l'exploitation :  
Raison juridique :  
N° SIRET :  
Nom du (ou des) exploitants :

## Bloc parcellaire 1

Commune(s) concernée(s) par cette  
photographie : 87063 EYJEAUX

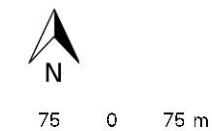


**Légende**

- Linéaire de haies
- Linéaire de lisières de bois
- Prairies humides naturelles
- Parcelles issues du RPG 2017
- Etang

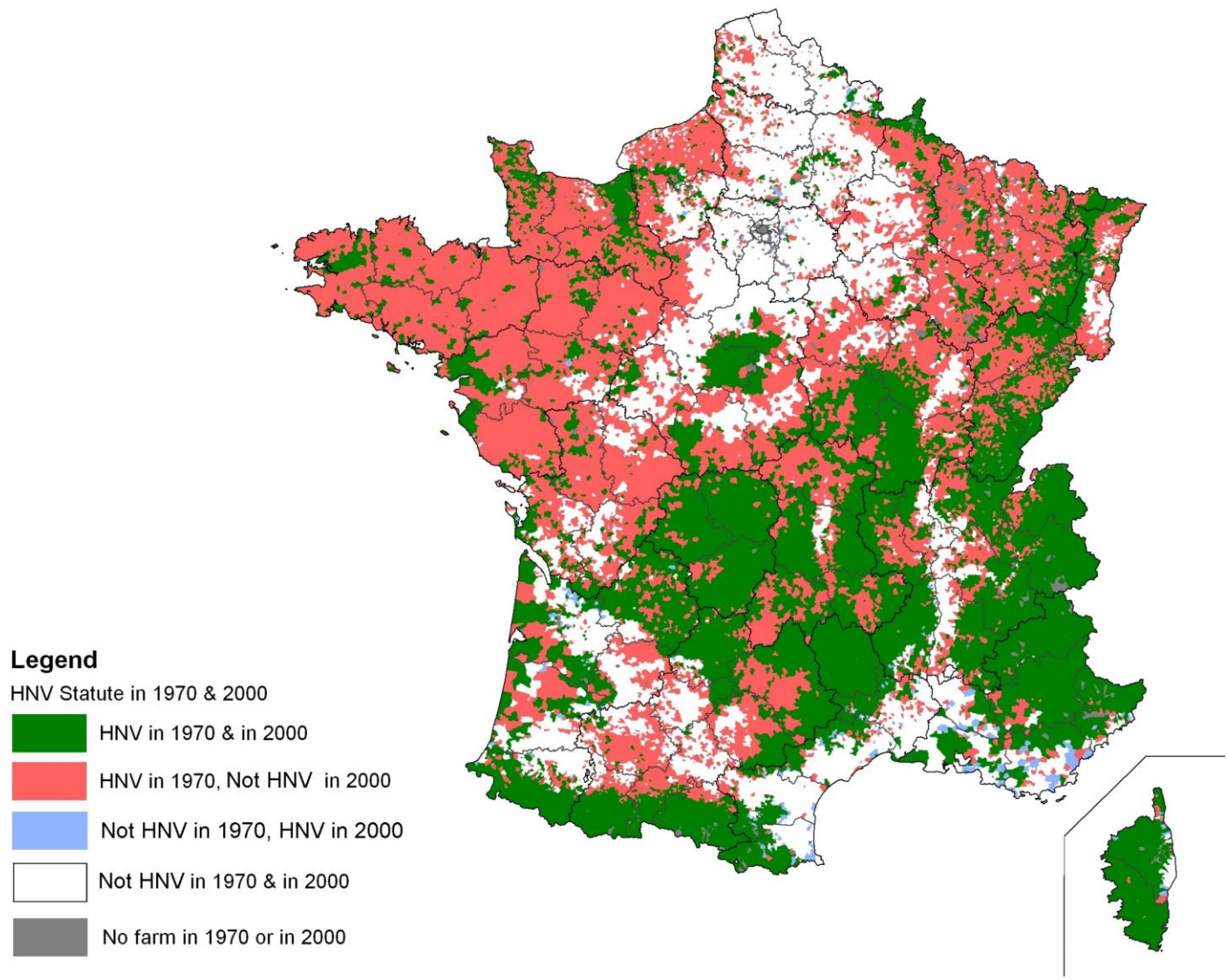
Nom(s), prénom(s) et signature(s)  
du (ou des) exploitants :

Nom, prénom et signature de  
l'auditeur :

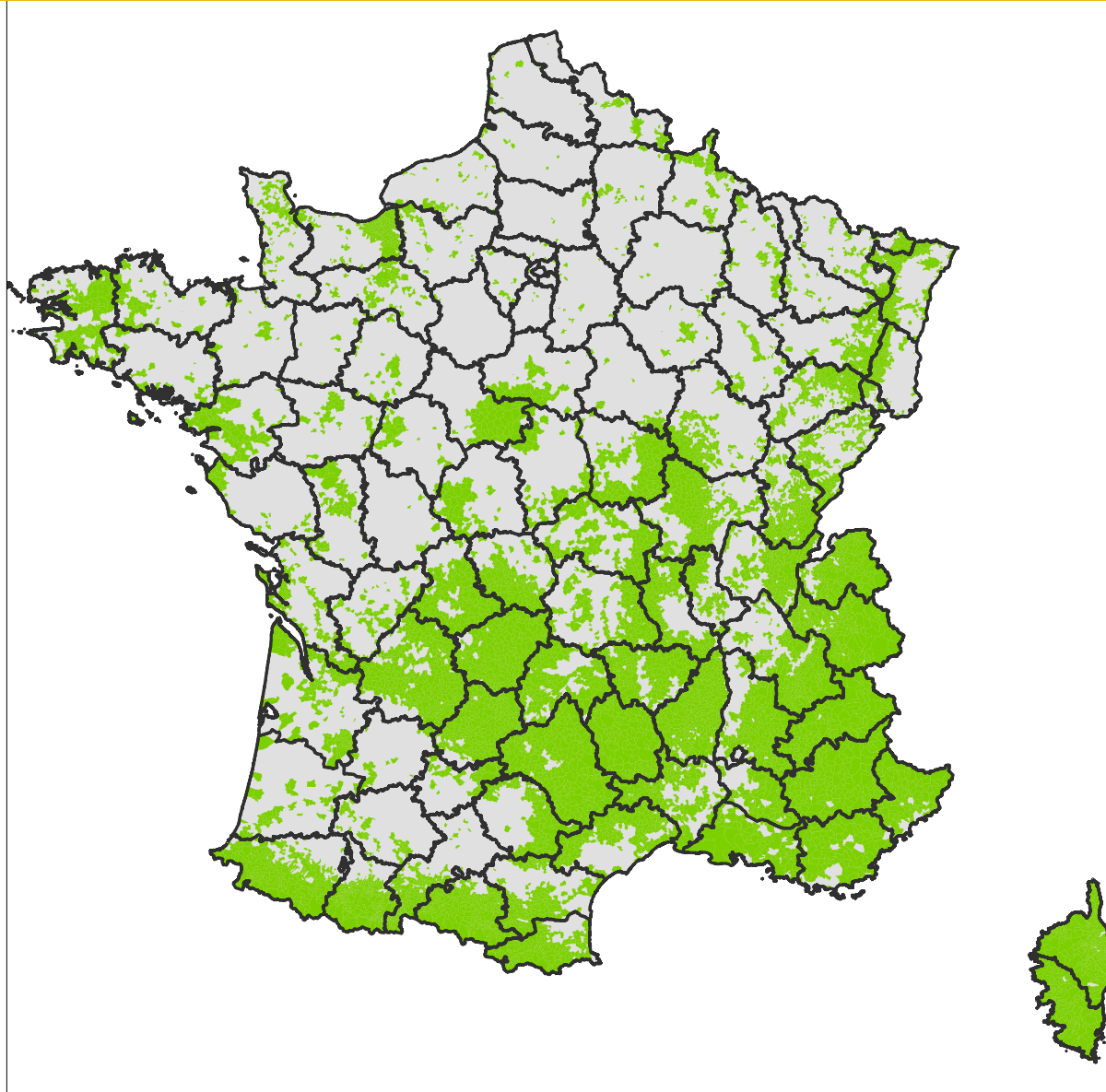




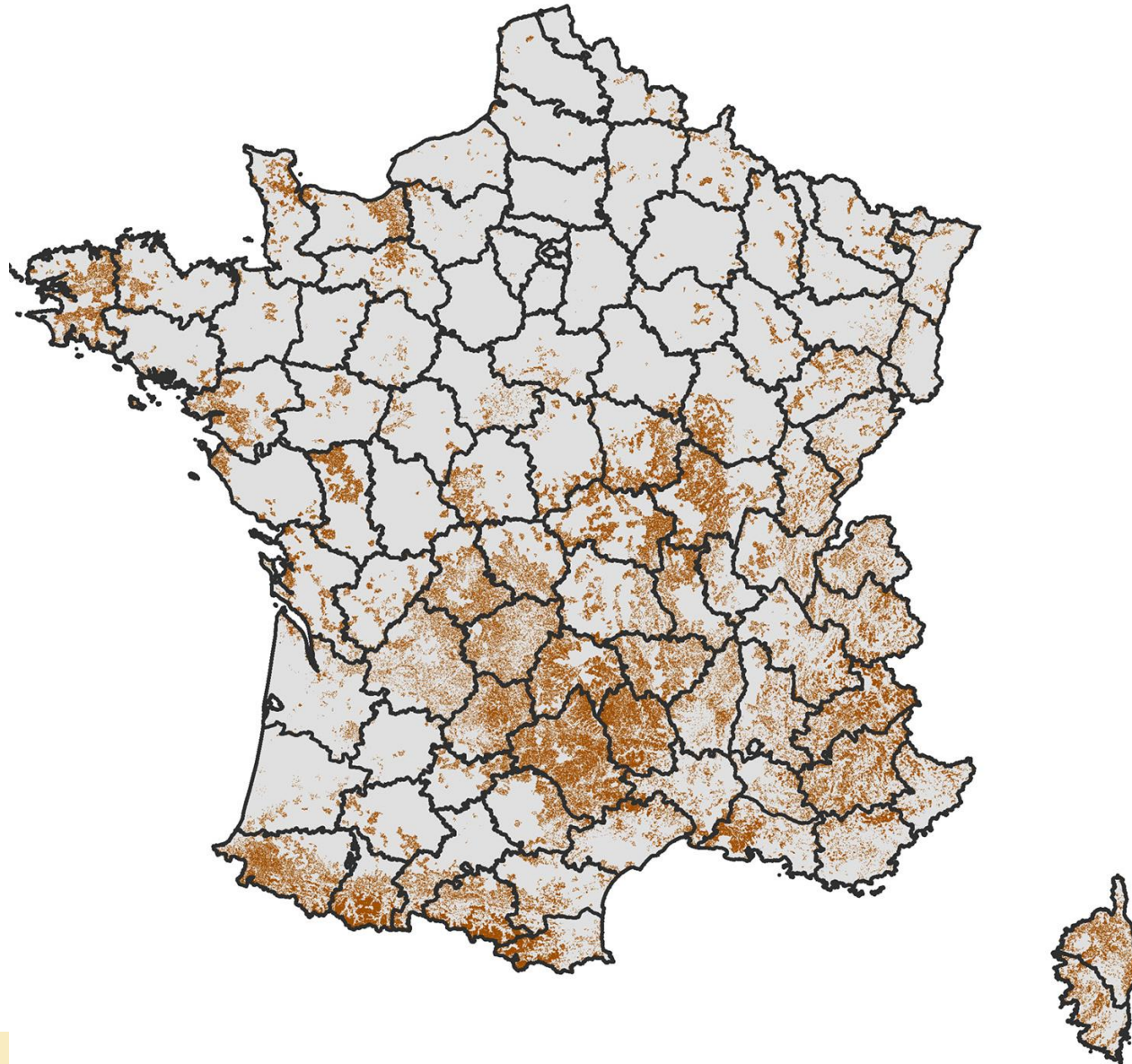
# Comparison 1970 - 2000 : 68% of HNV areas scaped



# HNV Farmland in 2017 per commune

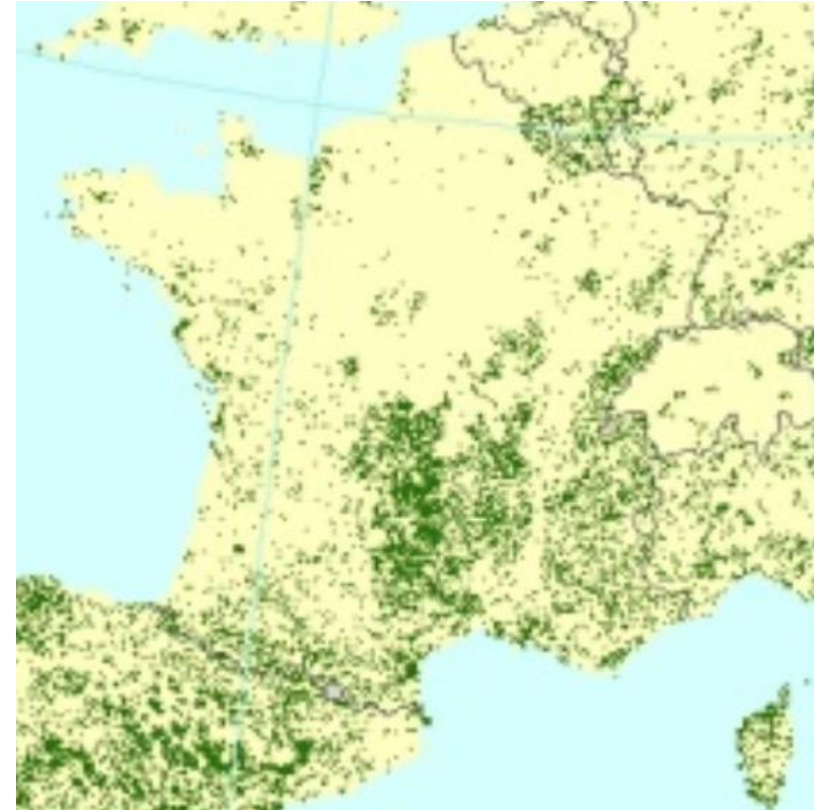
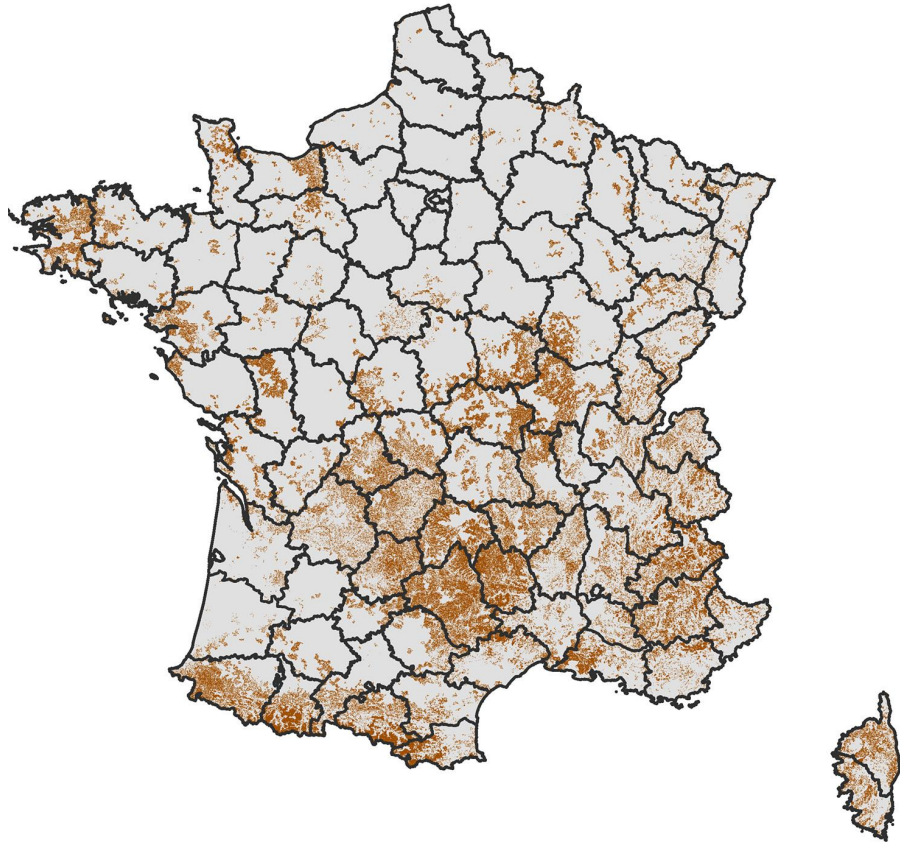


# HNV Farmland in 2017 per parcel





# HNV Farmland in 2017 per parcel







AGENCE DE L'EAU  
**ADOUR-GARONNE**

Experiment of Payments for Environmental services in the Adour Garonne Water Bassin  
5 M€ in 2019 (Objective 750 farms in 3 years)



Private mark Or Rouge for High quality limousine meat. All the farms have to be HNV since March 2019 (350 farms concerned)

# Expérimentation des paiements pour services environnementaux (PSE) : carte des territoires potentiels Travail Régions / DRAAF / DREAL / AEAG

