



# Technical and administrative support for the joint implementation of the Marine Strategy Framework Directive (MSFD) in Bulgaria and Romania – Phase 2

**First CBE meeting, 24-25 February 2015, Constanta**

Imagine the result



# Technical and administrative support for the joint implementation of the Marine Strategy Framework Directive (MSFD) in Bulgaria and Romania – Phase 2

*Under Framework contract for services related to coordination between the different marine regions in implementing the ecosystem approach.*



Imagine the result

**First CBE meeting**  
**24-25 February 2015, Constanta**



# Program CBE 24-25 February 2015

## Tuesday 24th of February

- 9h00-9h30 Welcome and introduction to the **outcomes of phase I** and to the workshop
- 9h30-10h00 Introduction to **programme of measures**
- 10h00-10h30 **Long list** of measures **Romania**
- 10h30-10h45 Coffee break
- 10h45-11h15 **Long list** of measures **Bulgaria**
- 11h15-12h30 **Long list** of measures BSC, OSPAR, HELCOM and **other**
- 12h30-14h00 Lunch break
- 14h00-14h30 UBA project on development PoM – Bulgaria
- 14h00-15h30 linking measures to targets (group)
- 15h30-16h00 Coffee break
- 16h00-17h00 Selection and revisions on the selected **common targets**

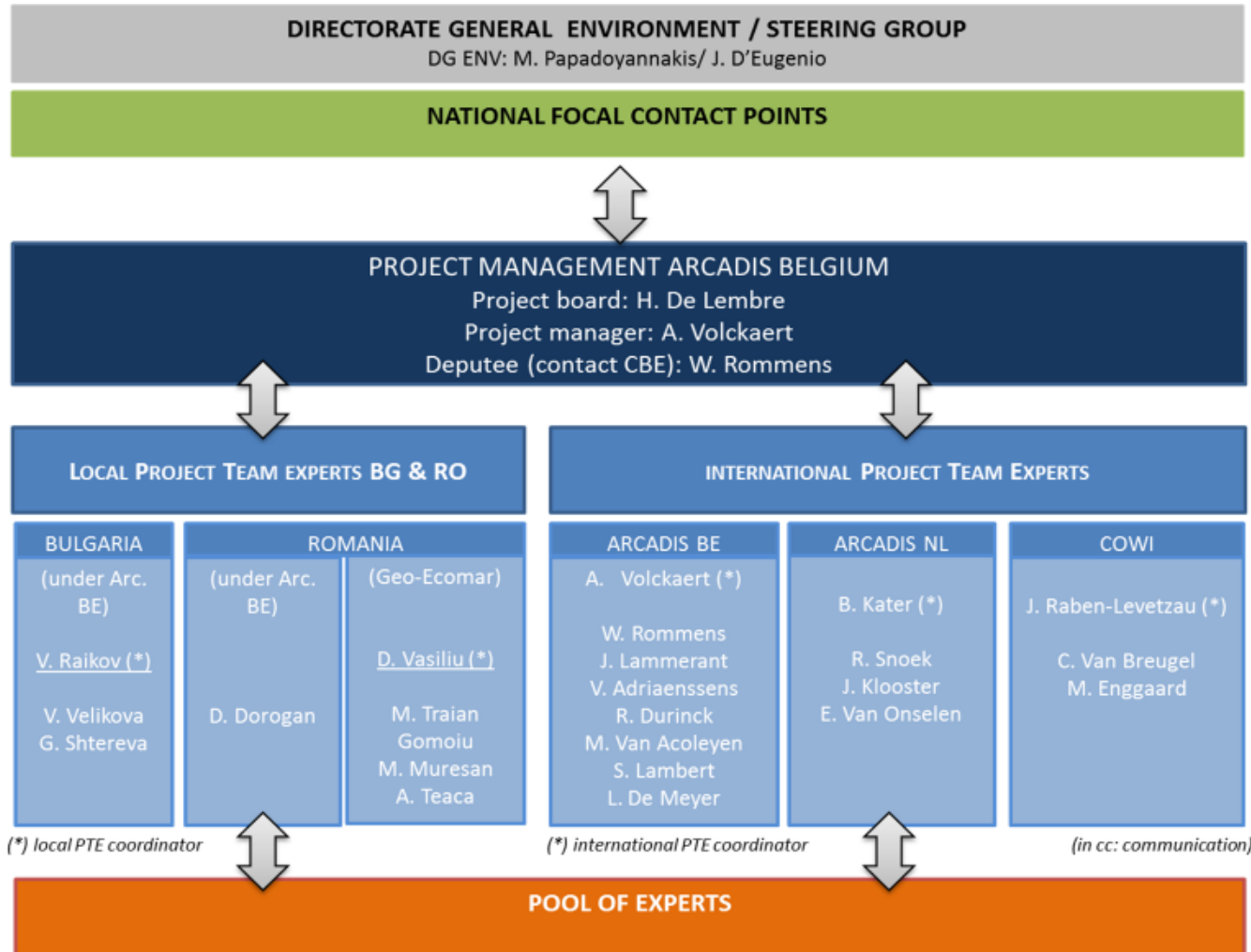
## Wednesday 25th of February

- 9h00-10h30 Development of **the template roof report**: what, how, when?
- 10h30-10h45 Coffee break
- 10h45-12h30 Continued,
- 12h30-14h00 Lunch
- 14h00-15h30 Practicalities for the **consultation process** and other arrangements
- 15h30 Closure of the 1<sup>st</sup> CBE



Imagine the result

# Welcome & Introduction



Imagine the result

# Phase 1



- **Overall goal:** support BG and RO in implementing the Black Sea component of the MSFD CIS WP 2014-2018
- **Specific objectives:** provide technical and administrative support for:
  1. Building the information basis for a more coherent and comparable joint implementation of the MSFD in Bulgaria and Romania
  2. Capacity building activities in the region with the view to strengthening the administrative and technical capabilities in Bulgaria and Romania for joint MSFD implementation
  3. Promoting coordination activities within the Black Sea marine region and with other marine regions
  4. Within each of these specific objectives: identification of future financing needs as well as of future technical and scientific support needs

Tasks	Tasks & Activities	Lead partner	Contributing partners	Outputs	Timing
<b>Task 1 – Building the information basis</b>					
1.1	<p><b>Developing monitoring factsheets</b></p> <ul style="list-style-type: none"> <li>- In-depth analysis of the BG &amp; RO national MSFD reports (desk review)</li> <li>- Development of the monitoring fact sheet template (incl. CBE)</li> <li>- Entering content into the monitoring fact sheets (General, programme, subprogram level) <ul style="list-style-type: none"> <li>o Desk review</li> <li>o CBE: Status &amp; main issues on monitoring BG &amp; RO</li> <li>o CBE: Data comparability &amp; management</li> <li>o CBE: Integrated monitoring BG &amp; RO (in cooperation with ICES)</li> </ul> </li> <li>- Translation</li> <li>- Public consultation (outside scope)</li> <li>- Revision of the monitoring fact sheets (after PC)</li> </ul>	COWI	<p>Local input on monitoring fact sheets will be split between local PTE BG and RO on an equal basis. Other support by relevant project partners.</p> <p>Pool of experts and MS coordinators will support CBE events.</p> <p>Consultation process (outside scope project) will be coordinated by the MS coordinators.</p>	<ul style="list-style-type: none"> <li>• Initial template monitoring factsheet</li> <li>• Agreed template monitoring factsheet</li> <li>• Overview tables per descriptor (consulted and agreed with BG &amp; RO)</li> <li>• Draft final monitoring (sub programme) fact sheets for each descriptor (English)</li> <li>• Draft translated monitoring fact sheets (into BG and RO) (min. 1 month for translation)</li> <li>• Final monitoring fact sheets for BG &amp; RO</li> </ul>	<ul style="list-style-type: none"> <li>• 07/01/2014</li> <li>• 15/02/2014</li> <li>• 15/02/2014</li> <li>• 31/03/2014 (before PC)</li> <li>• Before public consultation</li> <li>• 30/09/2014</li> </ul>
1.2	<p><b>Identifying technical and scientific support needs for 2015-2020 and beyond</b></p> <ul style="list-style-type: none"> <li>- Overview technical and scientific support needs for BSC (desk review)</li> <li>- Defining future technical and research needs for BG &amp; RO (per descriptor or MSFD element)</li> <li>- Selection of priority needs and priority support options for BG &amp; RO (CBE)</li> <li>- Drafting realistic work plan for the identified priority needs</li> <li>- Assessment of financial means <ul style="list-style-type: none"> <li>o Desk review of potential funding sources</li> <li>o CBE: Potential funding opportunities to address identified needs BG &amp; RO</li> </ul> </li> <li>- Appropriate consultation and finalisation of document <ul style="list-style-type: none"> <li>o Potential CBE: Consultation on technical &amp; scientific needs per descriptor or MSFD element</li> </ul> </li> </ul>	ARCADIS	<p>Local information collection &amp; drafting documents on technical &amp; scientific needs per descriptor or MSFD element will be split between local PTE BG and RO on an equal basis.</p> <p>Pool of experts and MS coordinators will support CBE events.</p> <p>Consultation (CBE event) will be coordinated by the local PTE or MS coordinators.</p>	<ul style="list-style-type: none"> <li>• Template technical &amp; scientific needs (incl. work plan)</li> <li>• Final list of priority support needs BG &amp; RO</li> <li>• Document on process consultation and finalisation document</li> <li>• Report CBEs</li> <li>• Draft document technical &amp; scientific needs per descriptor or MSFD element</li> <li>• Final document technical &amp; scientific needs (incl. work plan) per descriptor or MSFD element</li> </ul>	<ul style="list-style-type: none"> <li>• 15 Jan 2014</li> <li>• 1 Feb 2014</li> <li>• 1 Feb 2014</li> <li>• 2 weeks after event</li> <li>• 15 Feb 2014</li> <li>• 30 July 2014</li> </ul>

1.3	<b>Maintenance of the EEA webpage</b> - ensuring that information is up-to-date	ARCADIS	Support delivery documents by all partners	<ul style="list-style-type: none"> <li>Up-to date EEA webpage</li> </ul>	<ul style="list-style-type: none"> <li>Project duration</li> </ul>
1.4	<b>Design webpage Agreement on practicalities</b> - CBE: Needs for data information sharing (set up public web page)	ARCADIS	In close cooperation with the MS coordinators  If needed, support by project partners (e.g. documents, translation, etc.)	<ul style="list-style-type: none"> <li>Report CBE</li> <li>Draft structure public webpage</li> <li>Agreed document on hosting and maintenance by BG &amp; RO</li> <li>Operational public website</li> </ul>	<ul style="list-style-type: none"> <li>2 weeks after event</li> <li>15 Feb 2014</li> <li>15 March 2014</li> <li>31 March 2014</li> </ul>
<b>Task 2 – Capacity Building Events (CBE)</b>					
2.1	<b>Drafting the list of capacity building events BG &amp; RO</b> - CBE related to Task 1 - CBE by ICES (fisheries and integrated monitoring) - Other CBEs (to be further discussed)	ARCADIS	ALL partners  Support by pool of experts and MS coordinators invited to the CBE 'Review and prioritization technical and research needs for BG & RO'	<ul style="list-style-type: none"> <li>Final list of CBE events (planning)</li> </ul>	<ul style="list-style-type: none"> <li>1 Feb 2014</li> </ul>
2.2	<b>Identifying pool of experts</b>	ARCADIS	All partners	<ul style="list-style-type: none"> <li>Matrix pool of experts</li> </ul>	<ul style="list-style-type: none"> <li>5 Jan 2014</li> </ul>
2.3	<b>Organisation of the CBE</b> - Selecting date, venue, location - Selecting pool of experts - Sending invitation - Practical organisation (venue) - Background doc (if relevant) - Reporting - Reimbursement - Synergies other relevant meetings	ARCADIS BG&RO authorities	Organisation will be split between ARCADIS (max. 2 CBE) and MS coordinators (remaining events).  Based on the CBE, support will be given by other PTE and pool of experts.	<ul style="list-style-type: none"> <li>Template invitation</li> <li>Guidelines on CBEs and steering group meetings organisation</li> <li>Calendar other relevant meetings (synergies)</li> </ul>	<ul style="list-style-type: none"> <li>5 Jan 2014</li> <li>5 Jan 2014</li> </ul>
2.4	<b>Reporting of the CBE</b> - Drafting template for reporting - Drafting minutes CBE - Drafting report CBE	ARCADIS	Report will be drafted by the leading project partner of CBE based on the minutes of the MS coordinators + feedback received by other participating PTE.	<ul style="list-style-type: none"> <li>Template for minutes and reporting CBEs</li> <li>Minutes of the CBE</li> <li>Final reports of CBE events</li> </ul>	<ul style="list-style-type: none"> <li>5 Jan 2014</li> <li>2 weeks after each event</li> </ul>

Task 3 – Cooperation Black Sea and other Marine Regions					
3.1	Including information from and other RSC activities as part of Task 1 and Task 2	ARCADIS	Violeta Velikov and all task leads		<ul style="list-style-type: none"> <li>Project duration</li> </ul>
3.2	Involvement of the BSC (and other RSC experts) in the CBEs and involvement of the BSC in developing the webpage	ARCADIS	Violeta Velikova and all task leads		<ul style="list-style-type: none"> <li>Project duration</li> </ul>
3.2	<b>Developing the background document</b> <ul style="list-style-type: none"> <li>- Drafting discussion document</li> <li>- Consultation (outside scope)</li> <li>- CBE: Consultation Discussion document BSC 2014-2016</li> <li>- Finalization background doc</li> </ul>	Regional expert Violeta Velikova	ARCADIS	Discussion document Background document	<ul style="list-style-type: none"> <li>15 Feb 2014</li> <li>1st November 2014</li> </ul>



*Inception report*

CBE 1: 24-25 Febr. 2015  
(Constanta)

*Interim Report begin March*

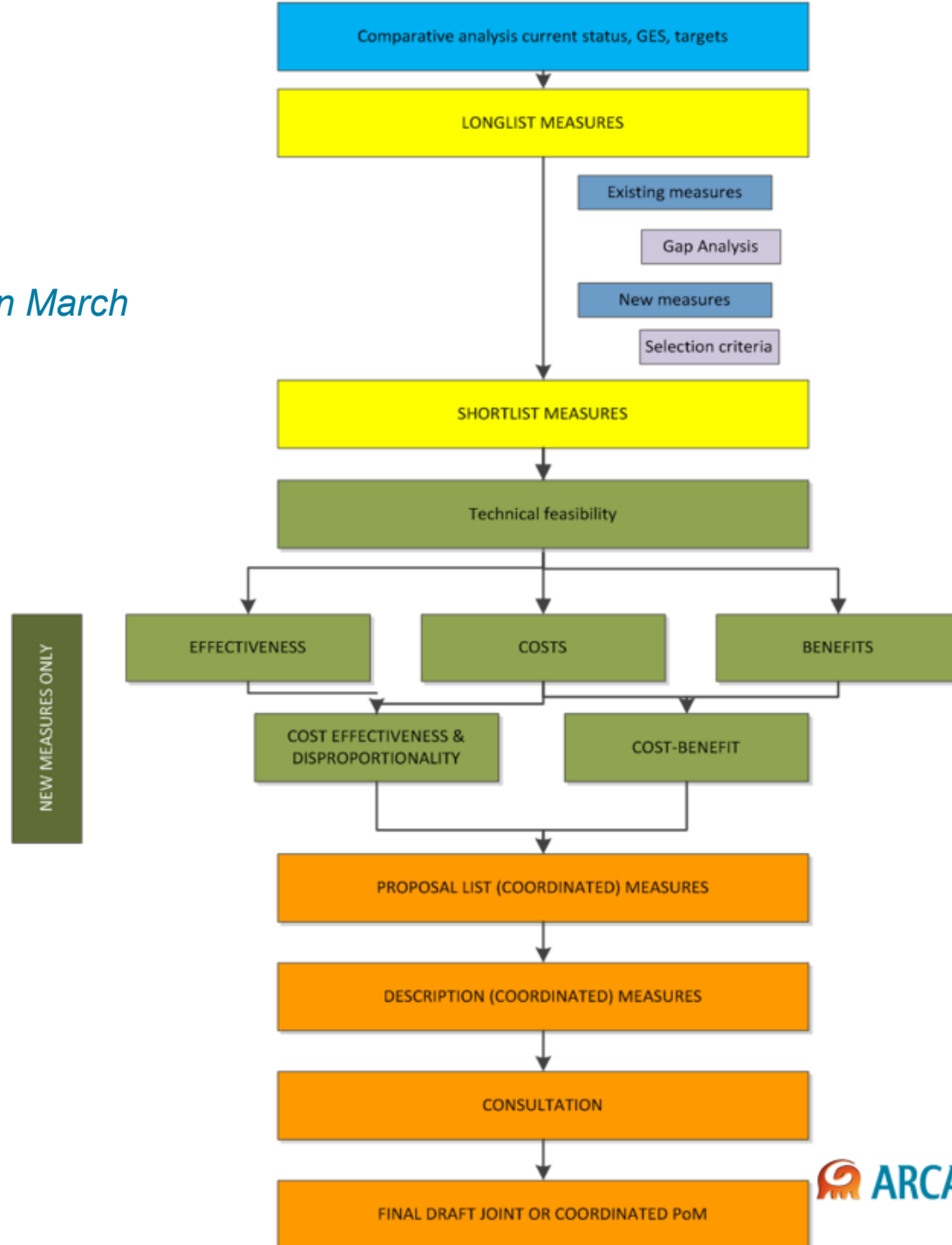
CBE 2: 25-26 March 2015  
(Varna)

CBE 3, 4 & 5: 6-8 May  
2015  
(Brussels)

CBE 6 & 7: 16-18 June  
2015 (Constanta)

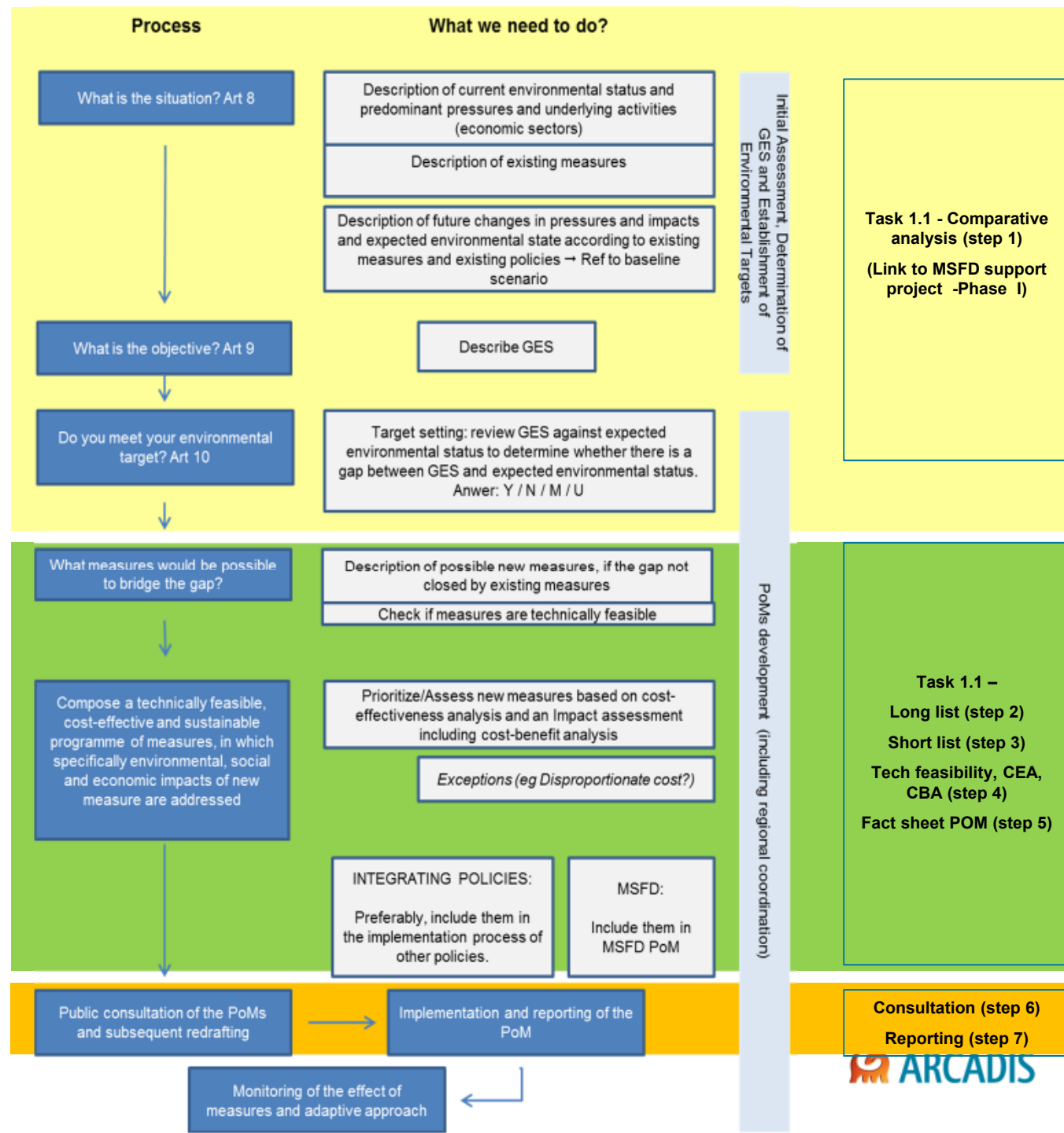
CBE 8: 8-9 Sept.2015  
(Varna)

Imagine the result



# Phased approach

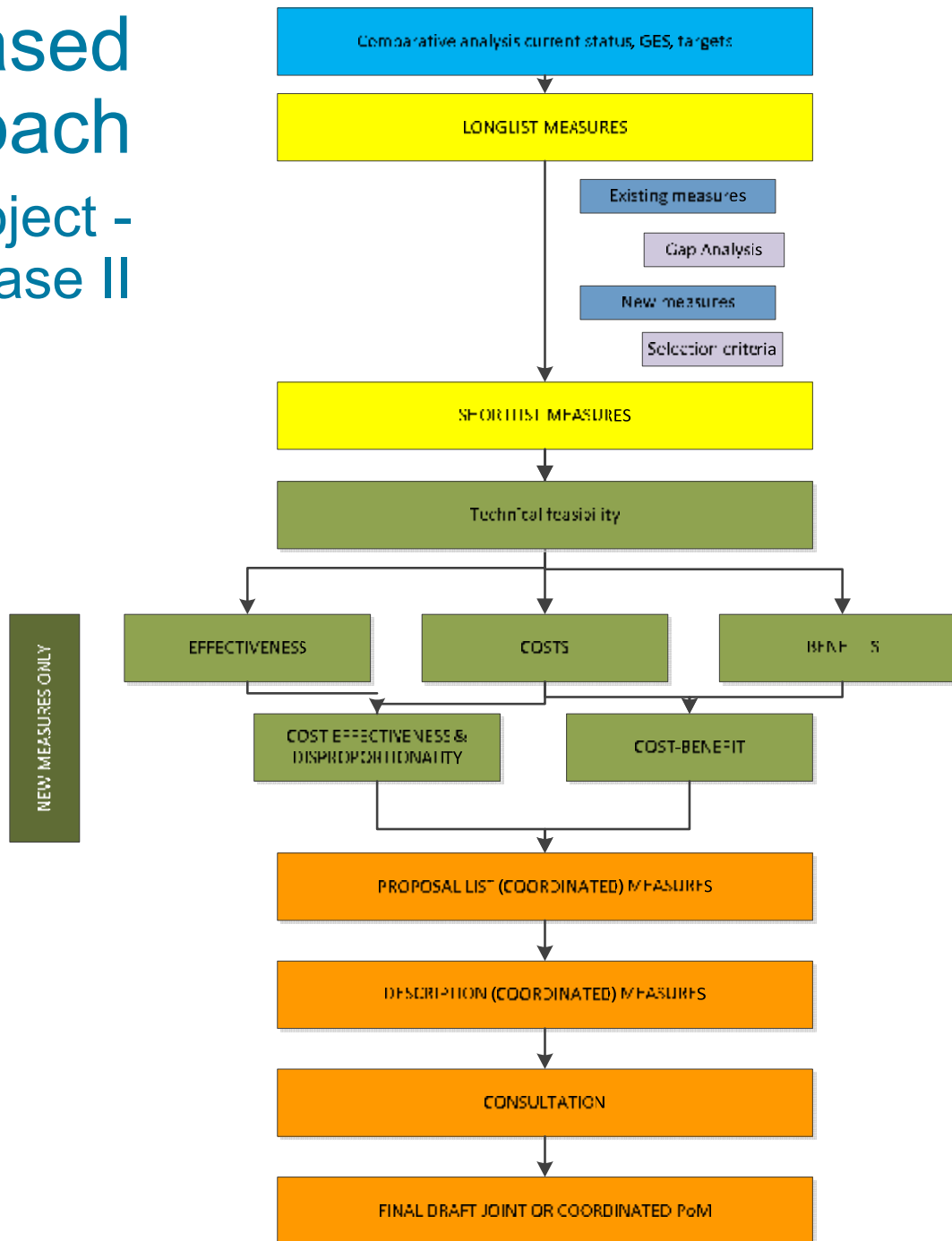
## PoM Recommendation EC



Imagine the result

# Phased approach

## Support project - Phase II



Imagine the result

# UBA project on development PoM Bulgaria

- Full title: Implementation of the Marine Strategy Framework Directive (MSFD) in Bulgaria – Development of Programmes of Measures under Article 13
- Aim: facilitating the establishment by BSBD of national programmes of measures under Art. 13 MSFD in time for reporting to the EU Commission by end of March 2016.
- Focus on national measures
- Coordination meeting: 12 March, Brussels
- Presentation by Maria Berglund

# Measures ?

- Existing vs new measures: 4 categories
- Categories
- Type of
- National and regional
- Land-related & sea-related
- Common - national
- Importance
- ....



*"It's a clear first -- a successful reversal of dead zones," said Andrew Hudson, of UN Oceans. In the northern Black Sea, habitats have become healthier, species are returning, and sea-based livelihoods are again generating income for local communities.*

# 4 categories of measures

Table 1 Categories of measures based on PoM recommendations

Measures	Measure category	Cost-effectiveness analysis (CEA)	Cost-benefit analysis (CBA)
Article 13.1 & 13.2 <i>Measures relevant for the maintenance and achievement of GES under the MSFD that <u>have been adopted under other policies and implemented</u></i>	EXISTING 1.a	No	No
Article 13.1 & 13.2 <i>Measures relevant for the maintenance and achievement of GES under the MSFD that <u>have been adopted under other policies but that have not yet been implemented or fully implemented</u></i>	EXISTING 1.b	No	No
Art 13.3 <i>Additional measures to achieve GES which build on existing EU legislation and international agreements but go beyond what is already required under these</i>	NEW 2.a	Yes* Case by case	Yes* Case by case
Art 13.3 <i>Additional measures to achieve GES which do not build on existing EU legislation or international agreements, i.e. that are completely new.</i>	NEW 2.b	Yes	Yes

Source: adapted from "POM recommendation"

(\* Existing measures are considered to be all measures currently implemented and those which are going to be implemented as planned under EU legislation other than the MSFD (e.g. WFD, HBD) and/or international agreements.

Imagine the result

# Type of measures (MSFD, Annex VI)

N°	Description of measure
1	<b>Input controls:</b> management measures that influence the amount of a human activity that is permitted.
2	<b>Output controls:</b> management measures that influence the degree of perturbation of an ecosystem component that is permitted.
3	<b>Spatial and temporal distribution controls:</b> management measures that influence where and when an activity is allowed to occur.
4	<b>Management coordination measures:</b> tools to ensure that management is coordinated.
5	Measures to improve the <b>traceability</b> , where feasible, of marine pollution
6	<b>Economic incentives:</b> management measures which make it in the economic interest of those using the marine ecosystems to act in ways which help to achieve the good environmental status objective.
7	<b>Mitigation and remediation tools:</b> management tools which guide human activities to restore damaged components of marine ecosystems.
8	Communication, stakeholder involvement and raising public awareness.

# Type of measures (MSFD, Annex VI)

- |                                                      |                                                                                  |
|------------------------------------------------------|----------------------------------------------------------------------------------|
| (1) Input controls                                   | (1) Port reception facilities; desposit refund systems for bottles; prohibitions |
| (2) Output controls                                  | (2) Clean-up actions beaches; noise standards piling                             |
| (3) Spatial and temporal distribution control        | (3) MSP; designation MPA                                                         |
| (4) Management coordination measures                 | (4) Regional action plans; inspections; waste management plans                   |
| (5) Measure to improve traceability marine pollution | (5) Check flights oil pollution at sea                                           |
| (6) Economic incentives                              | (6) EPR schemes; Ban plastic bags (single use)                                   |
| (7) Mitigation and remediation tools                 | (7) Use of BAT; prohibition activities during breeding season                    |
| (8) Communiication and participation                 | (8) Information brochures; media events                                          |



# Typology of measures – modes of action

- **'Technical'**: an actual action that one can see (and measure) in the field. In principle a wide range of measures have a primarily technical mode of action.
- **'Legislative'**: Adapting or supplementing national environmental law and other national legislation influencing the marine environment to implement environmental targets and to achieve/maintain GES.
- **'Economic'**, such as economic incentives that provide financial motives to stimulate a desired behaviour or discouraging an unwanted behaviour. Financial instruments are often aimed at the uptake of technical measures. For example, a subsidy for beach resorts of 20 Euros for each additional garbage bin they place.
- **'Policy driven'**: Policy instruments can be economic incentives, but also other instruments, such as voluntary agreements with stakeholders, communication strategies, awareness raising, and education. For example, the government launches an information campaign to make the beach resorts aware of the new subsidy they can get for placing more garbage bins, or beach resorts informing their customers where the litter bins are located, or teachers telling children it is fun to collect waste and put it in a litter bin and gives you a clean beach as well.

# Regional regulations involved

## Sea-related

BSC – Strategic Action Plan

Port reception facilities (Directive 2000/59/EC)

MARPOL

Habitats Directive - NATURA 2000 – conservation objectives

Common Fisheries Policy (CFP)

## Land-related

WFD (2000/60/EC)

Waste framework directive (2008/98/EC)

Bathing water directive (2006/7/EC)

Floods Directive (2007/60/EC)

Urban waste water treatment (91/271/EC)

Packaging and packaging waste (94/62/EC)



Relevant

&

Direct link to envir. target

Imagine the result

## Step 1: Comparative analysis of MSFD elements under Art. 8, 9, 10 and 11

### **The analysis will focus on, without being limited to:**

- Overview of most relevant pressures and impacts at subregional level (BG, RO – Art. 8) and regional level (Black Sea);
- Overview of revised GES (Art.9) & targets (Art.10) by BG & RO;
- Overview of monitoring programmes & related indicators/parameters by BG & RO inclusive common indicators defined within the Black sea subregion (Art.11)/region;
- Overview of common indicators defined in regional action plans (RAP) of other regional seas (i.e. RAP on marine litter have been developed, some of them already approved, for the Mediterranean (UNEP/MAP), NE Atlantic (OSPAR), Baltic (HELCOM)).

**Deliverable**, an overview table of this in-depth analysis will be made summarizing and compiling the elements of Article 8, 9, 10 and 11 that Bulgaria and Romania reported in 2012 - 2014 and comparing them with other related elements (such as indicators) used in the Black Sea or other MS/regions.

Focusing on a **joint or coordinated PoM**, especially the **link with transboundary pressures and impacts for BG & RO** (and in the whole Black Sea region), and their GES & target definitions will be important.

**Close consideration** will take place of the work done by **the Black Sea Commission**. Some main policy questions assessed under the Black Sea Integrated Monitoring and Assessment Programme (**BSIMAP**)

## Step 2: Long-list of Measures

### A. Existing measures and gap analysis

Besides **a desk top study to identify existing measures**, **a capacity building event with stakeholders (CBE1, February)** will be organised to validate the results of the study and to complement them where needed. The list will be structured according to the environmental targets defined by Bulgaria and Romania in step 1

Secondly, a **gap analysis** will be conducted to assess **how far these existing measures are sufficient to address the priority (transboundary) pressures and reach the MSFD GES & environmental targets set by BG & RO.**

Considering the limited time frame of the service request, the gap analysis will be based **on expert judgment (CBE1 event, February).**

### B. Identification of possible new measures

If gaps are identified, the next step consists of **identifying possible new measures to meet the MSFD environmental targets.** This step will include **a desk top study of:**

- Measures proposed in **recently adopted EU legislation** (e.g. new Common Fisheries Policy, revised waste legislation, Marine Spatial Planning) and in the **recently adopted BSC documents** (e.g. Marine Litter report);
- **Spatial protection measures** to improve Marine Protected Area (MPA) networks or to manage industrial or leisure activities;
- Measures **applied or proposed in other regional seas;**
- Measures given in the **Arcadis study (2011)** 'Economic analysis of policy measures for the implementation of MSFD'.

In addition to the desk study, a **capacity building event (CBE2, March)** will be organised with **stakeholders and sectors to brainstorm on potential new measures to close the gaps towards the environmental targets.**

Imagine the result