



Phylloscopus canariensis

Annex I	No
International action plan	No

Canary Islands Chiffchaff, *Phylloscopus canariensis*, is a species of passerine bird in the warbler family found in woodland and forest ecosystems.

Phylloscopus canariensis is endemic to the Canary Islands and has a breeding population size of 20000-100000 pairs and a breeding range size of 6400 square kilometres in the EU27. The breeding population trend in the EU27 is Increasing in the short term and Increasing in the long term.

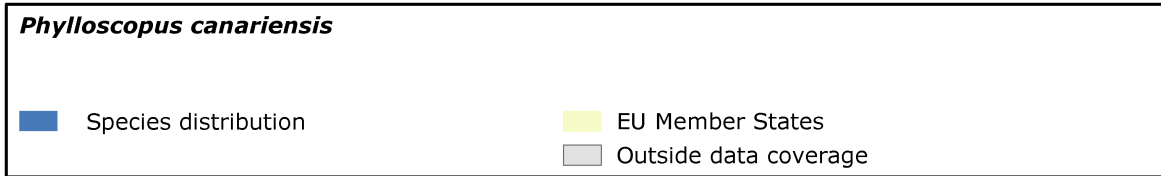
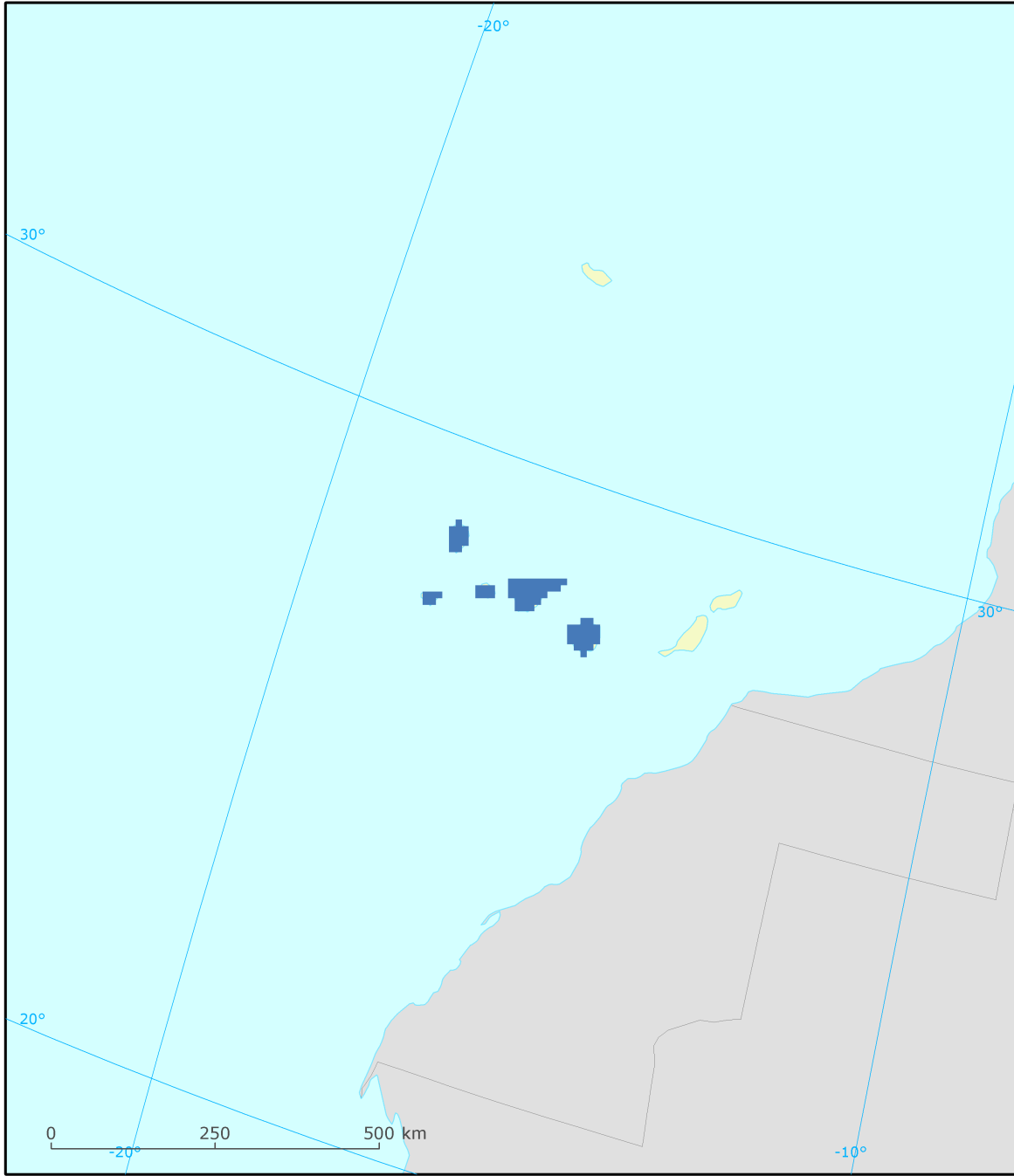
The EU population status of *Phylloscopus canariensis* was assessed as Secure, because the species does not meet any of the IUCN Red List criteria for threatened or Near Threatened, or the criteria for Depleted or Declining (the EU27 population or range has not declined by 20% or more since 1980).

Assessment of status at the European level

Breeding population size	Breeding population trend		Range area	Breeding range trend		Winter population size	Winter population trend		Population status
	Short term	Long term		Short term	Long term		Short term	Long term	
20000 - 100000 p	+	+	6400	+	+				Secure

See the endnotes for more informationⁱ

Phylloscopus canariensis
Report under the Article 12 of the Birds Directive

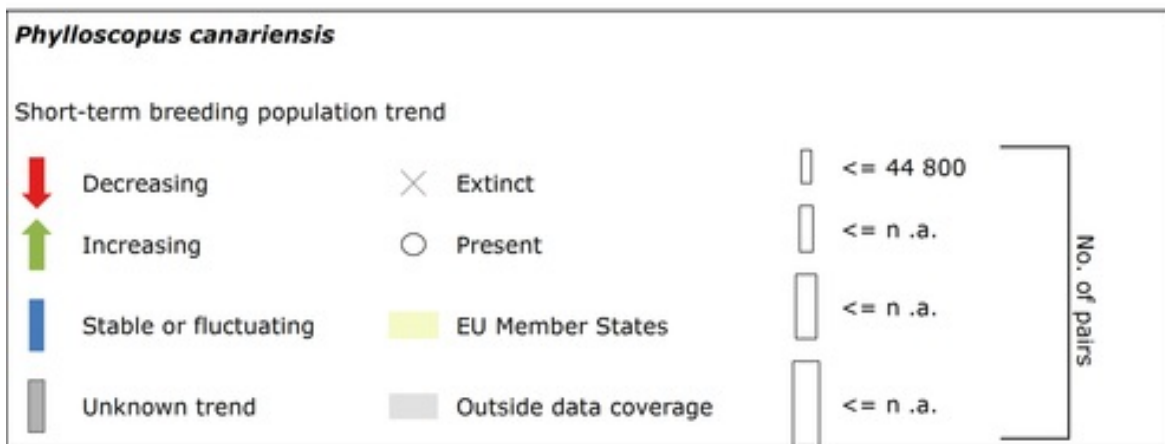


Trends at the Member State level

MS/Ter.	% in EU27	Breeding population size	Breeding population trend		Range area	Breeding range trend		Winter population size	Winter population trend	
			Short term	Long term		Short term	Long term		Short term	Long term
ESIC	100.0	20000 - 100000 p	+	+	6475	+	+			

See the endnotes for more informationⁱⁱ

Phylloscopus canariensis
 Report under the Article 12 of the Birds Directive



Phylloscopus canariensis
Report under the Article 12 of the Birds Directive

Short-term winter population trend was not reported for this species.

This information is derived from the Member State national reports submitted to the European Commission under Article 12 of the Birds Directive in 2013 and covering the period 2008-2012. More detailed information, including the MS reports, is available at:
<http://bd.eionet.europa.eu/article12/summary?period=1&subject=A613> .

Phylloscopus canariensis

Report under the Article 12 of the Birds Directive

ⁱ **Assessment of status at the European level:** The EU assessments of birds population status was made by the European Red List of Birds Consortium (under contract with the European Commission)

The EU27 population trends were assessed using these categories: '+' Increasing, '0' Stable, 'F' Fluctuating, '-' Decreasing, 'xu' Uncertain and 'x' Unknown. The breeding population size is estimated in majority of the cases as 'p' number of pairs. Alternative population units used are: 'males' number of males, 'i' number of individuals, 'cmales' number of calling males and 'bfem' number of breeding females. The winter population size is estimated as number of individuals.

ⁱⁱ **Species trends at the Member State level:** The percentage of the EU27 species population occurring in the Member States (% in EU27) is calculated based on the population size reported by the Member States.