



## *Falco pelegrinoides*

---

<b>Annex I</b>	No
<b>International action plan</b>	No

*Falco pelegrinoides*, which is only found in the Canary Islands in the EU27, and *F. peregrinus* are considered the same species, *F. peregrinus*, according to the current BirdLife International taxonomy. Therefore, the EU population status was assessed at the level of *F. peregrinus*. Peregrine Falcon, *Falco peregrinus*, is a species of day-flying bird of prey found in wetland, unvegetated or sparsely vegetated land, urban and river and lake ecosystems.

*Falco peregrinus* has a breeding population size of 9600-11900 pairs in the EU27. The breeding population trend in the EU27 is Increasing in the short term and Increasing in the long term.

The EU population status of *Falco peregrinus* was assessed as Secure, because the species does not meet any of the IUCN Red List criteria for threatened or Near Threatened, or the criteria for Depleted or Declining (the EU27 population or range has not declined by 20% or more since 1980).

*Falco peregrinus* has a breeding population size of 9500-11800 pairs and a breeding range size of 2010000 square kilometres in the EU27. The breeding population trend in the EU27 is Increasing in the short term and Increasing in the long term. *Falco pelegrinoides* has a breeding population size of 140-150 pairs and a breeding range size of 7700 square kilometres in the EU27. The breeding population trend in the EU27 is Increasing in the short term and Increasing in the long term.

**This factsheet was produced for *Falco pelegrinoides*. Also other subspecies/populations of the same species occur within the EU27. The assessment of status at the European level and the introductory text were done at the species level in line with the criteria for assessment of the EU population status.**

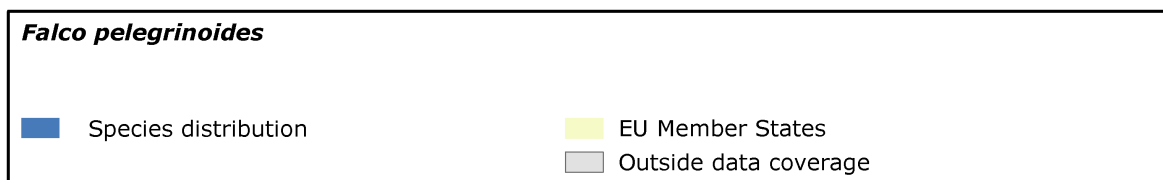
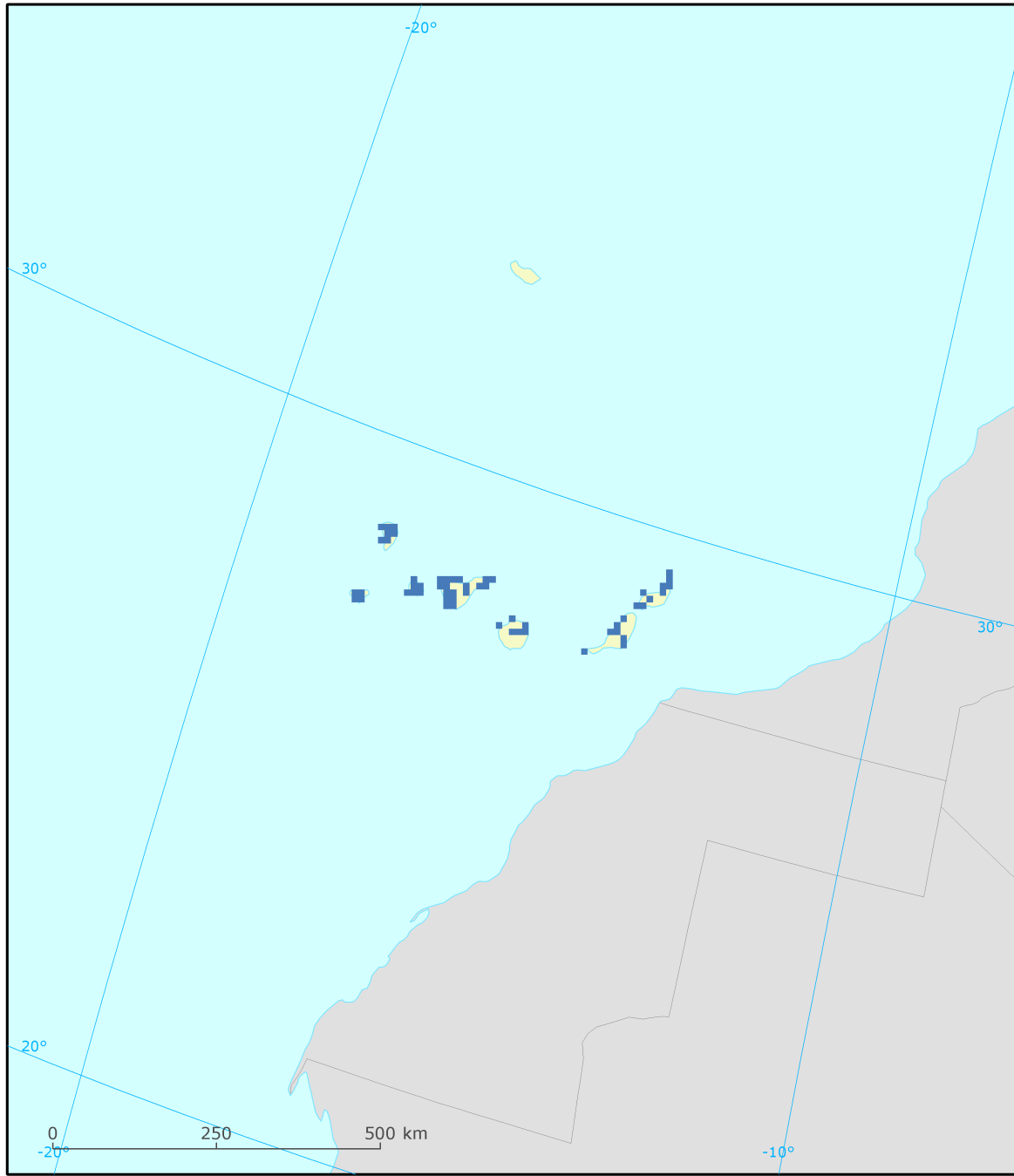
## Assessment of status at the European level

Breeding population size	Breeding population trend		Range area	Breeding range trend		Winter population size	Winter population trend		Population status
	Short term	Long term		Short term	Long term		Short term	Long term	
140 - 150 p	+	+	7700						Secure

See the endnotes for more information<sup>i</sup>

The population status assessment at the EU level was carried out at the species level. The EU status assessment covers following subspecies/populations: *Falco pelegrinoides*, *Falco peregrinus* all others, *Falco peregrinus brookei*, *Falco peregrinus peregrinus* (each of them presented in a separate factsheet).

***Falco pelegrinoides***  
Report under the Article 12 of the Birds Directive

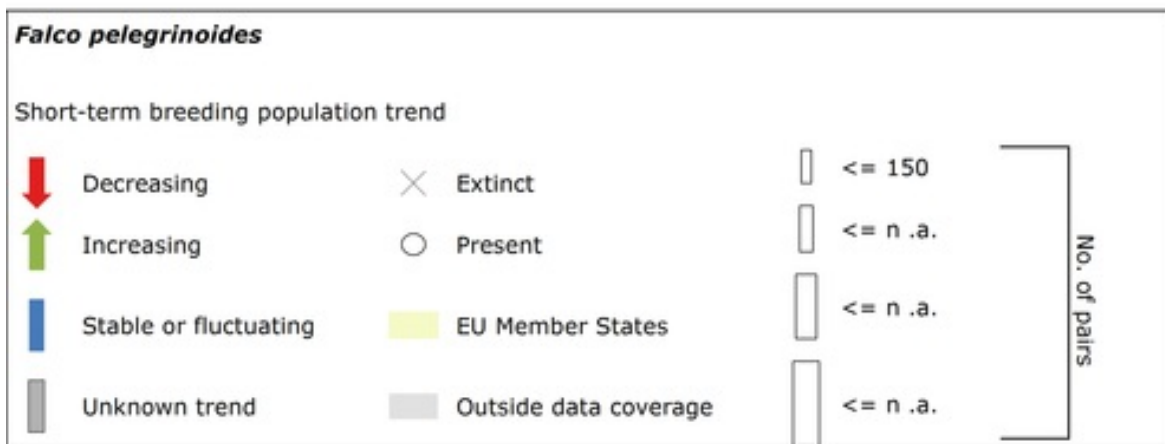


## Trends at the Member State level

MS/Ter.	% in EU27	Breeding population size	Breeding population trend		Range area	Breeding range trend		Winter population size	Winter population trend	
			Short term	Long term		Short term	Long term		Short term	Long term
ESIC	100.0	145 - 145 p	+	+	7750	+	+			

See the endnotes for more information<sup>ii</sup>

***Falco pelegrinoides***  
 Report under the Article 12 of the Birds Directive



***Falco pelegrinoides***  
*Report under the Article 12 of the Birds Directive*

*Short-term winter population trend was not reported for this species.*

This information is derived from the Member State national reports submitted to the European Commission under Article 12 of the Birds Directive in 2013 and covering the period 2008-2012. More detailed information, including the MS reports, is available at:  
<http://bd.eionet.europa.eu/article12/summary?period=1&subject=A512> .

<sup>i</sup> **Assessment of status at the European level:** The EU assessments of birds population status was made by the European Red List of Birds Consortium (under contract with the European Commission)

The EU27 population trends were assessed using these categories: '+' Increasing, '0' Stable, 'F' Fluctuating, '-' Decreasing, 'xu' Uncertain and 'x' Unknown. The breeding population size is estimated in majority of the cases as 'p' number of pairs. Alternative population units used are: 'males' number of males, 'i' number of individuals, 'cmales' number of calling males and 'bfem' number of breeding females. The winter population size is estimated as number of individuals.

<sup>ii</sup> **Species trends at the Member State level:** The percentage of the EU27 species population occurring in the Member States (% in EU27) is calculated based on the population size reported by the Member States.